



3700 A. Jones
Heartlands Hospital
-

Groot Brittannië

INPUTS 2013.1

Survey	INPUTS 2013.1
Start date	January, 1 2013
Supervisor	dr. C. Weykamp MCA Laboratory Streekziekenhuis Koningin Beatrix Winterswijk
Subscriptions	93
Result sets	91

Scores	Your score	MAP	reported
Quantitative	31	38	



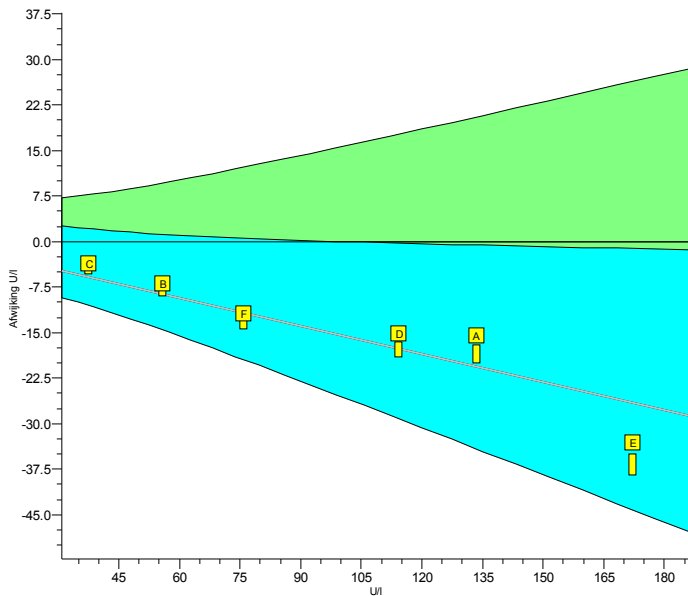
INPUTS 2013.1

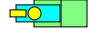
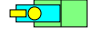
Analyte		Trueness				Precision		Performance			
		your mean	ref.	cons.	SDtI	your prec.	SDBI	this survey	PS	cumulative PSc	
ALAT	U/l	83.8	98.2	85.7	7.9	0.9	2.3		1		1
Alk. Phosphatase	U/l	178	188	173	15	1	2		2		2
Amylase	U/l	174	207	175	17	1	3		2		2
ASAT	U/l	69.2	78.6	69.5	5.9	1.0	1.7		0		0
Calcium	mmol/l	2.50	2.46	2.47	0.07	0.02	0.02		2		2
Chloride	mmol/l	101.8	100.0	100.8	1.8	0.8	0.9		1		1
CK	U/l	250	244	253	18	5	3		2		2
Creatinine	µmol/l	154.5	149.1	150.9	7.1	3.4	4.2		1		1
eGFR (F, 55, white)	ml/min/1,73m ²	31.2	32.0	32.3	2.7	1.4	1.5		2		2
Gamma-GT	U/l	82.7	87.7	75.9	16.3	0.5	0.8		2		2
Glucose	mmol/l	14.38	13.93	14.19	0.44	0.21	0.18		1		1
LD	U/l	524	532	895	321	6	16		2		2
Magnesium	mmol/l	1.26	1.22	1.23	0.04	0.04	0.02		2		2
Potassium	mmol/l	5.32	5.39	5.30	0.10	0.04	0.04		2		2
Sodium	mmol/l	144.0	144.0	142.7	1.7	1.8	0.9		1		1
Total Protein	g/l	65.7	66.8	66.0	1.8	0.6	0.7		2		2
Urate	µmol/l	385	376	374	15	2	4		2		2
Cholesterol	mmol/l	5.18	5.07	5.15	0.14	0.08	0.05		2		2
HDL-Cholesterol	mmol/l	1.20	1.14	1.17	0.06	0.02	0.03		2		2
Total :									31		31

INPUTS 2013.1

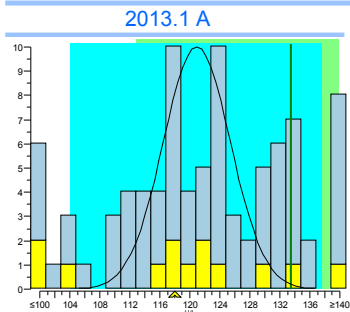
ALAT

units: U/l

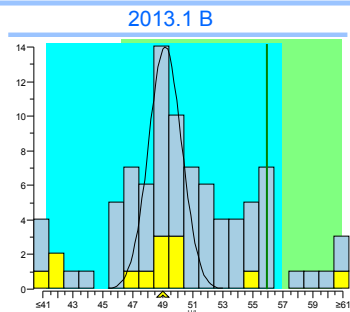


	2013.1	cumulative
Trueness	-15%	-15%
Precision	1.1%	1.1%
Number	6	6
Outliers	0	0
Sigma-TE	3.2 1	3.2 1
Sigma-SA	0.9	0.9
Score pictogram		
Regression line	$0.0 + 0.845 \cdot x$	$0.0 + 0.845 \cdot x$

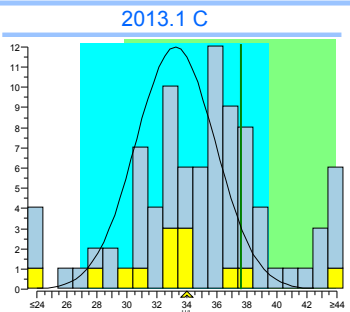
Consensus group niet IFCC traceerbaar
Method IFCC non-traceable



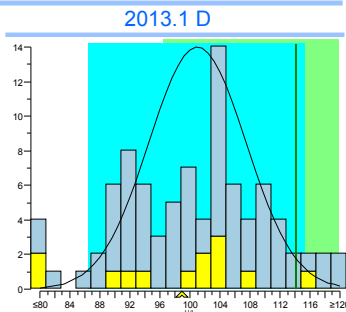
	cons.	meth.	ref.	lab
mean	120.9	120.9	133.5	118
SD	4.5	4.5		
n	13	13		
no	4	4		



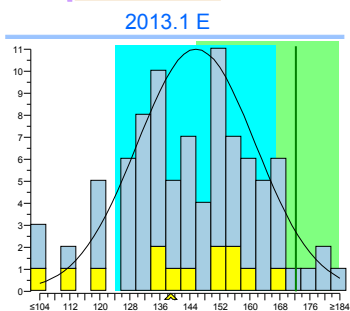
	cons.	meth.	ref.	lab
mean	49.2	49.2	55.9	49
SD	1.1	1.1		
n	13	13		
no	5	5		



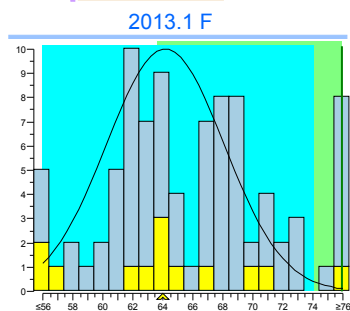
	cons.	meth.	exp.	lab
mean	33.2	33.2	37,6	34
SD	2.6	2.6		
n	13	13		
no	2	2		



	cons.	meth.	ref.	lab
mean	101.0	101.0	114.2	99
SD	6.5	6.5		
n	13	13		
no	2	2		



	cons.	meth.	ref.	lab
mean	146	146	172.2	139
SD	16	16		
n	13	13		
no	1	1		



	cons.	meth.	ref.	lab
mean	64.2	64.2	75.9	64
SD	3.9	3.9		
n	13	13		
no	2	2		

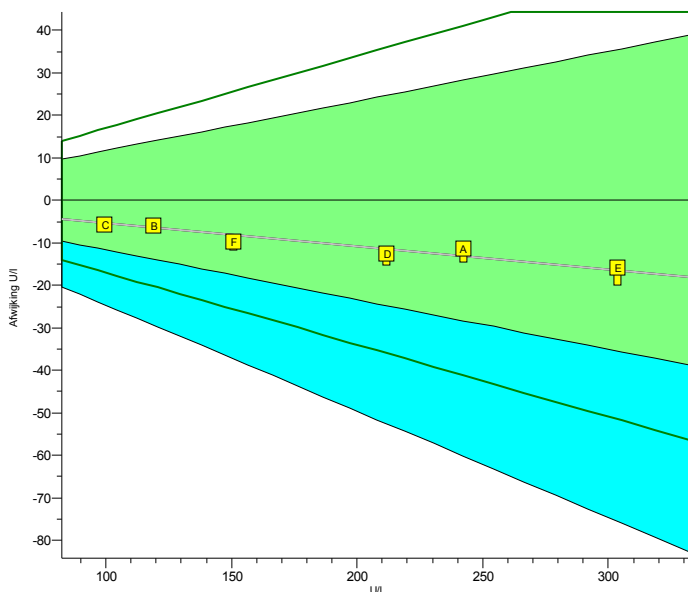
Legend



IFCC non-traceable IFCC traceable

INPUTS 2013.1

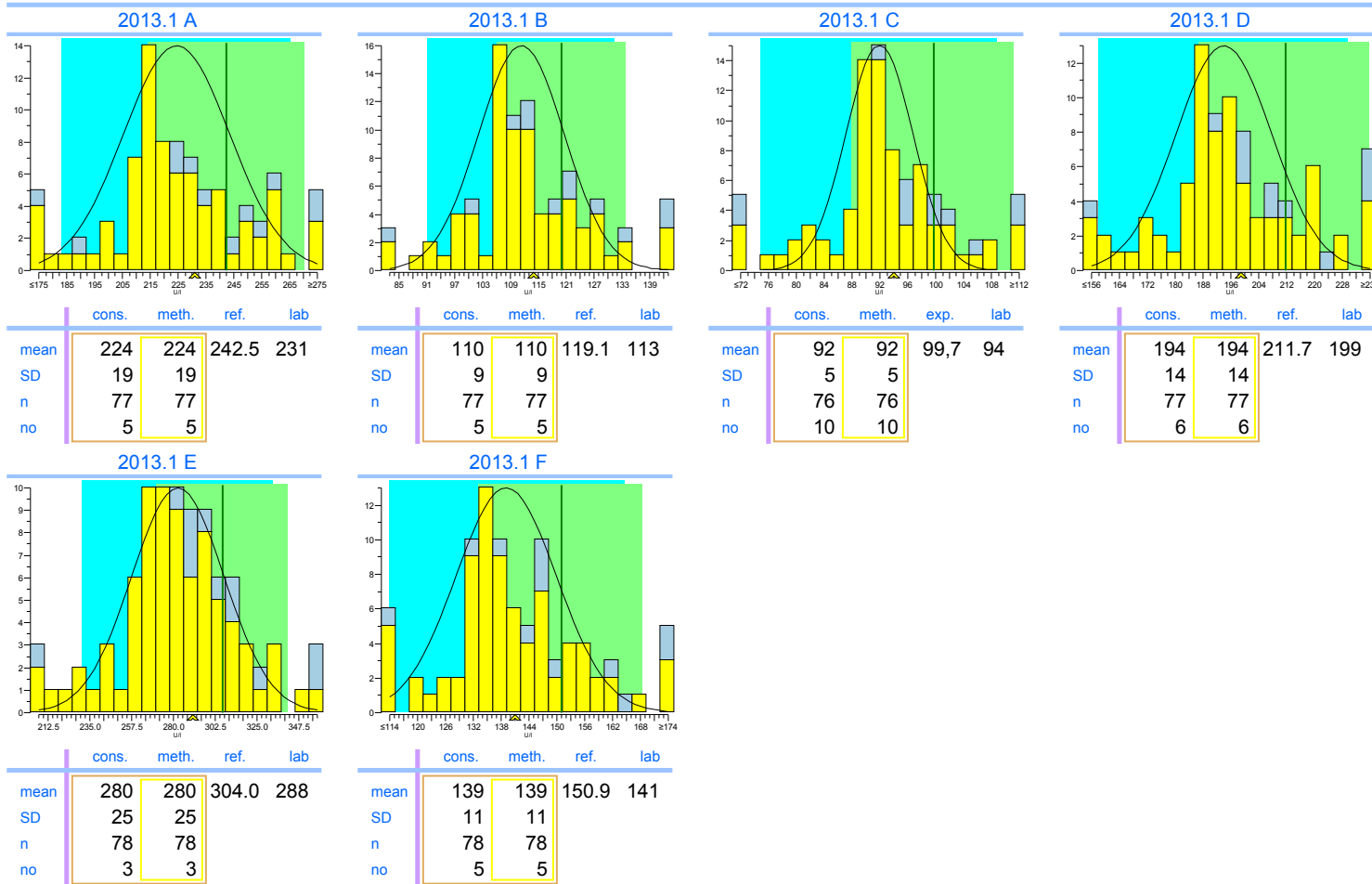
Alk. Phosphatase

units: U/I



	2013.1	cumulative
Trueness	-5.5%	-5.5%
Precision	0.39%	0.39%
Number	6	6
Outliers	0	0
Sigma-TE	6.0	6.0
Sigma-SA	6.0 2	6.0 2
Score pictogram		
Regression line	$0 + 0.946.x$	$0 + 0.946.x$

Consensus group	IFCC traceerbaar
Method	IFCC traceable



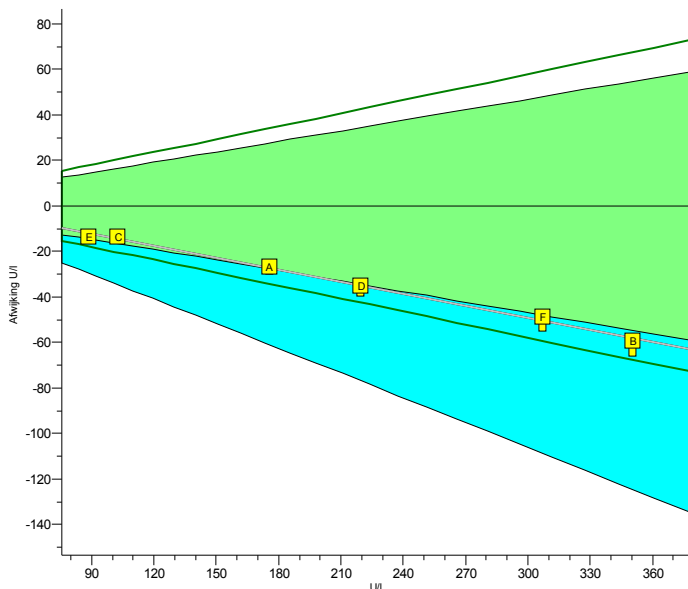
Legend



IFCC traceable IFCC non-traceable

INPUTS 2013.1

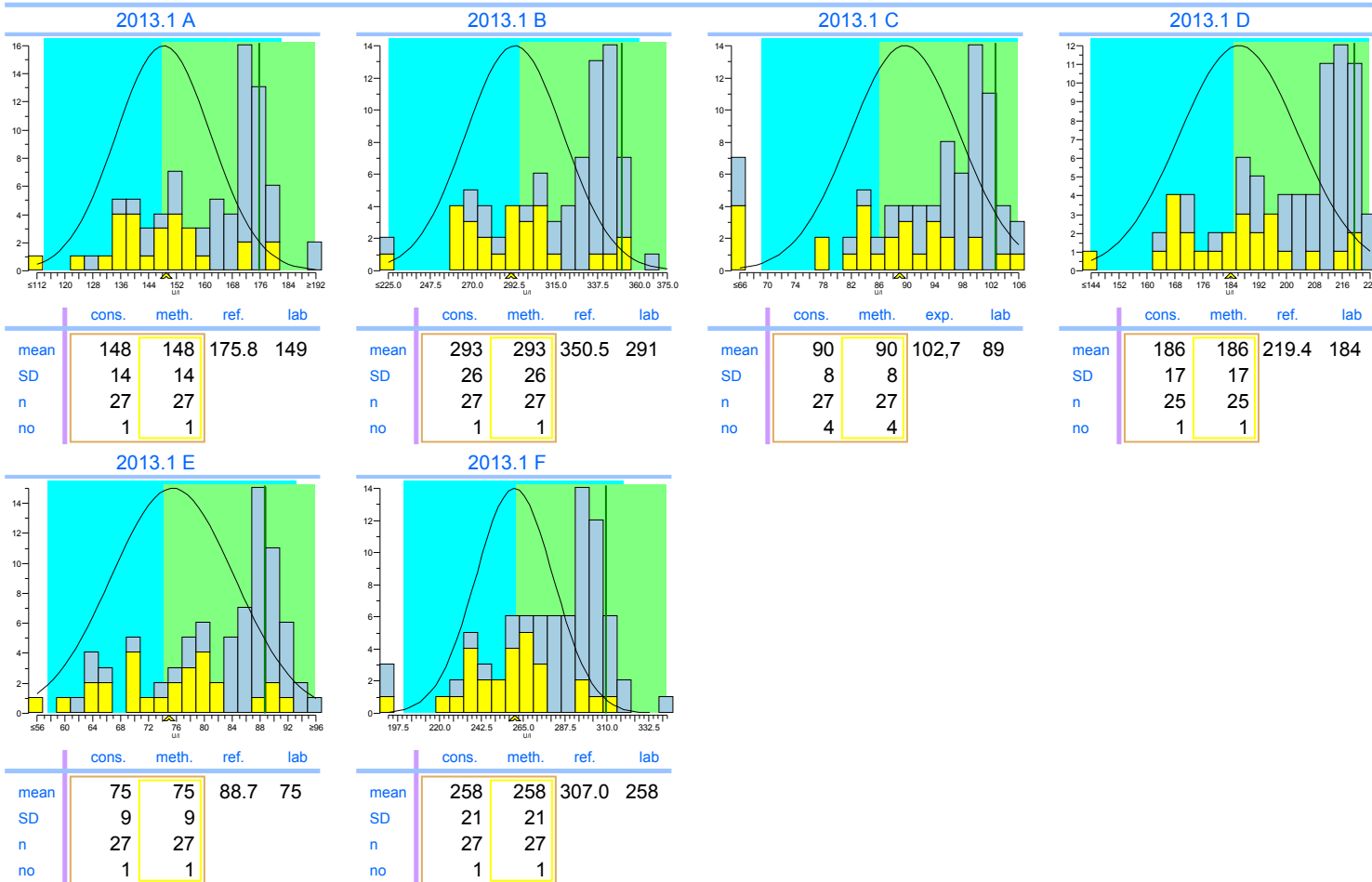
Amylase

units: U/l



	2013.1	cumulative
Trueness	-16%	-16%
Precision	0.66%	0.66%
Number	6	6
Outliers	0	0
Sigma-TE	1.3	1.3
Sigma-SA	6.0 2	6.0 2
Score pictogram		
Regression line	$3 + 0.825 \cdot x$	$3 + 0.825 \cdot x$

Consensus group niet IFCC traceerbaar
Method IFCC non-traceable



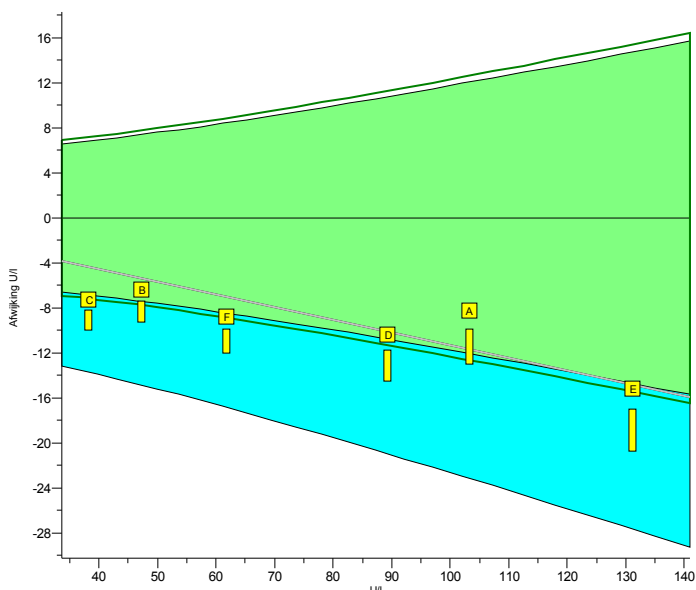
Legend

IFCC non-traceable IFCC traceable

INPUTS 2013.1

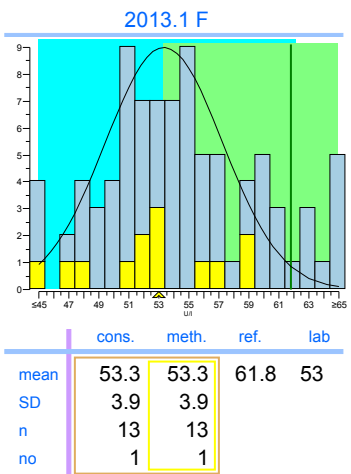
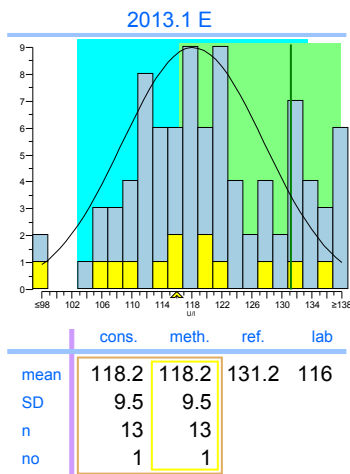
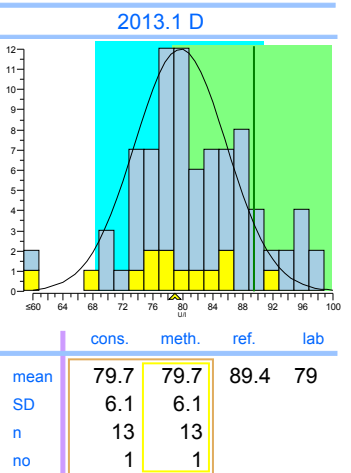
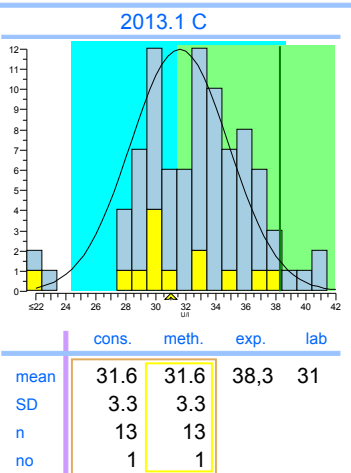
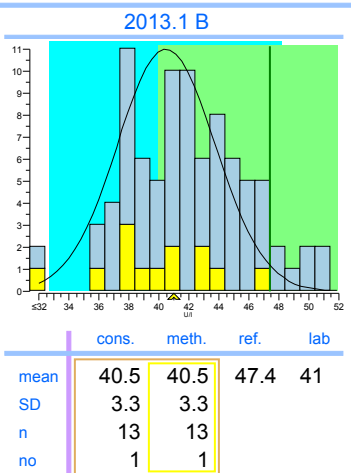
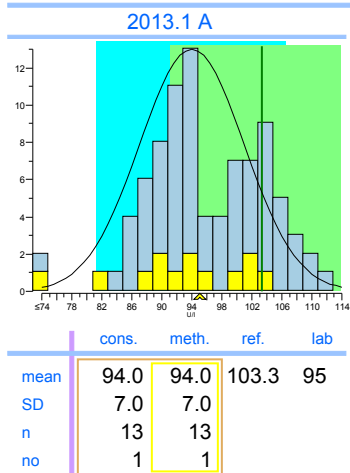
ASAT

units: U/I



	2013.1	cumulative
Trueness	-12%	-12%
Precision	1.5%	1.5%
Number	6	6
Outliers	0	0
Sigma-TE	1.3	1.3
Sigma-SA	1.7 0	1.7 0
Score pictogram		
Regression line	$0.0 + 0.887 \cdot x$	$0.0 + 0.887 \cdot x$

Consensus group niet IFCC traceerbaar
Method IFCC non-traceable



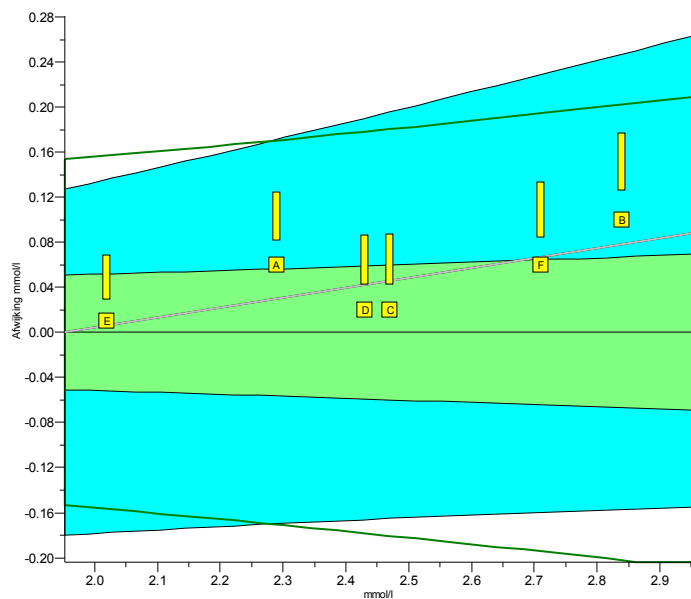
Legend

IFCC non-traceable IFCC traceable

INPUTS 2013.1

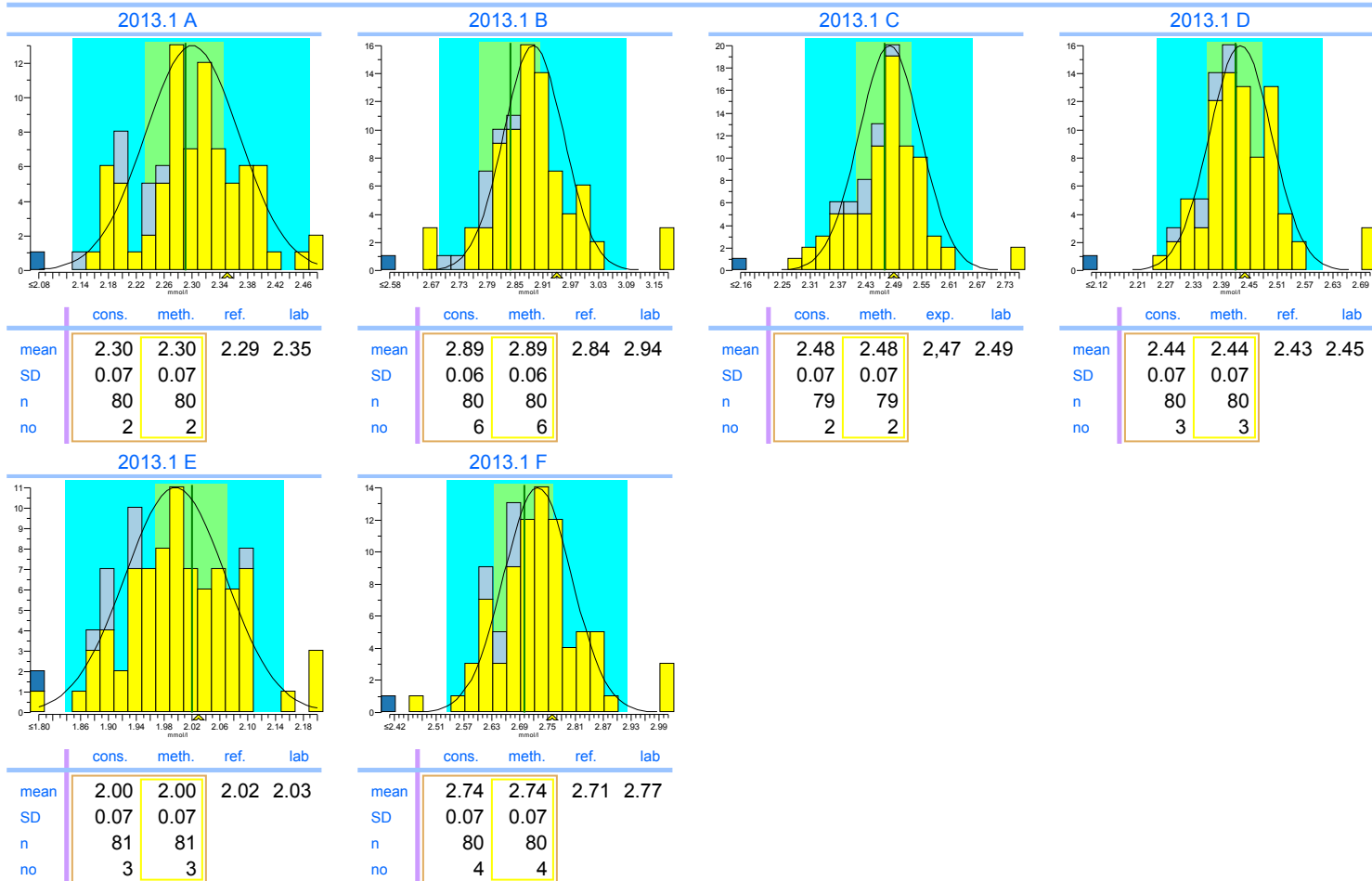
Calcium

units: mmol/l



	2013.1	cumulative
Trueness	+1.8%	+1.8%
Precision	0.74%	0.74%
Number	6	6
Outliers	0	0
Sigma-TE	1.7	1.7
Sigma-SA	6.0 2	6.0 2
Score pictogram		
Regression line	$-0.17 + 1.088.x$	$-0.17 + 1.088.x$

Consensus group	Colorimetrisch
Method	Colorimetric, automatic, discrete



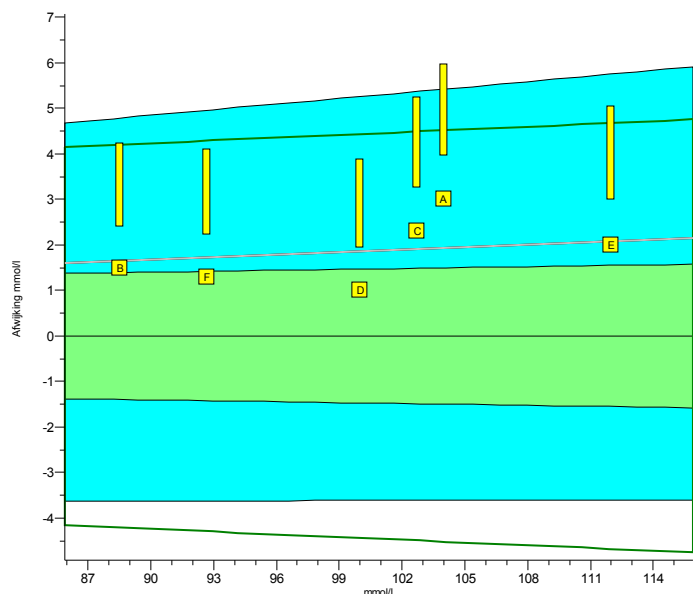
Legend

- Colorimetric, automatic, discrete
- ISE indirect (with predilution)
- Other methods

INPUTS 2013.1

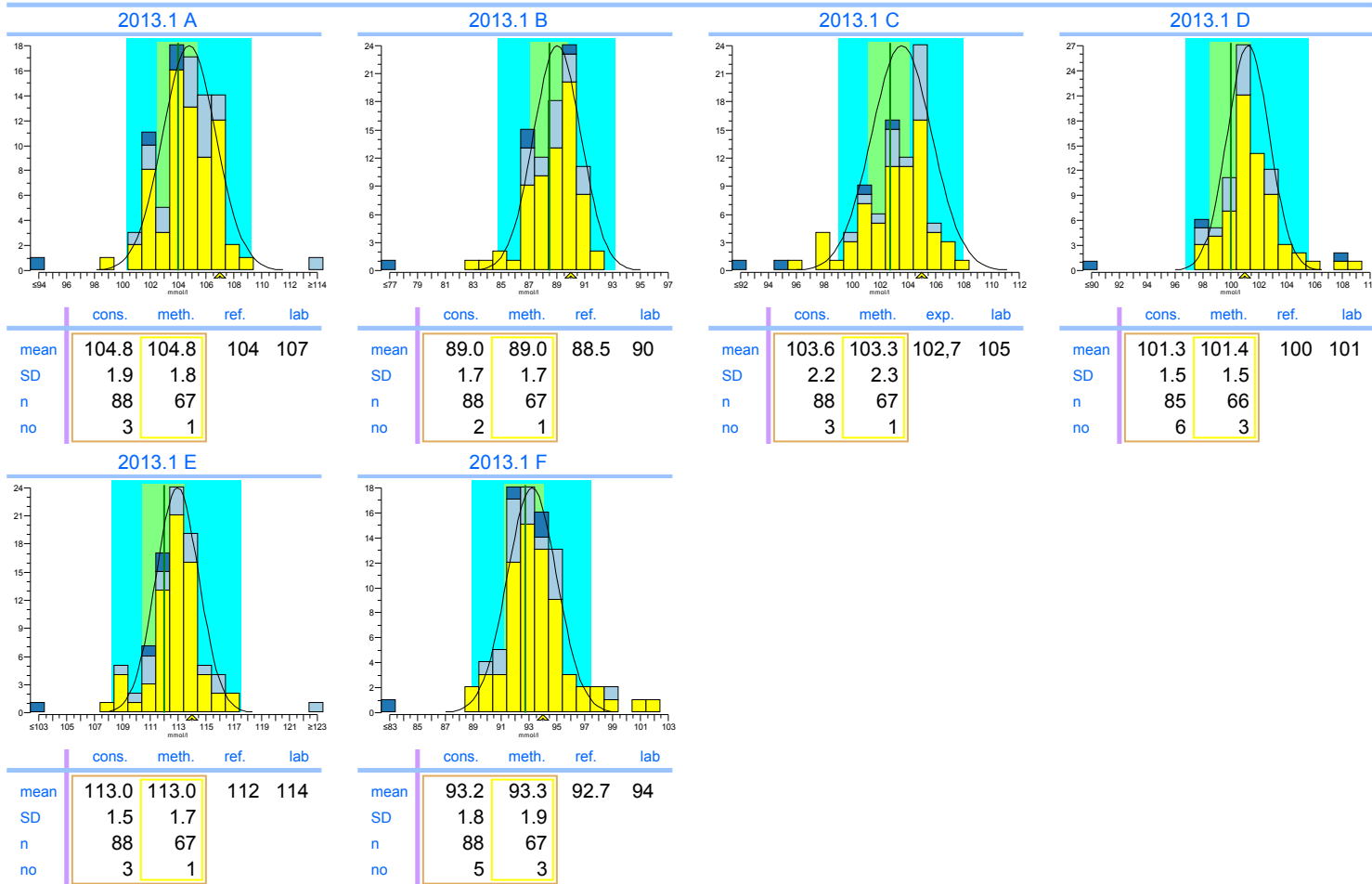
Chloride

units: mmol/l



	2013.1	cumulative
Trueness	+1.9%	+1.9%
Precision	0.78%	0.78%
Number	6	6
Outliers	0	0
Sigma-TE	0.3	0.3
Sigma-SA	4.1	4.1
Score pictogram		
Regression line	$0.0 + 1.019 \cdot x$	$0.0 + 1.019 \cdot x$

Consensus group ISE/Colorimetrie
Method ISE indirect (with predilution)



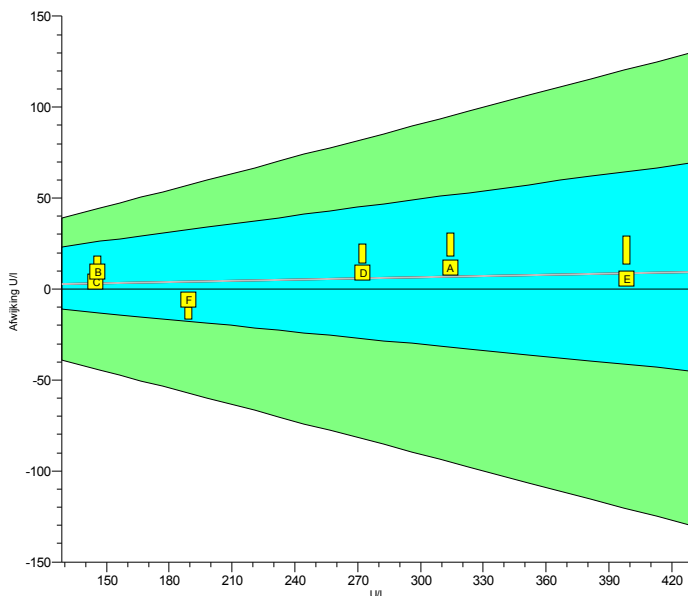
Legend



- ISE indirect (with predilution)
- ISE direct (no predilution)
- Other methods

INPUTS 2013.1

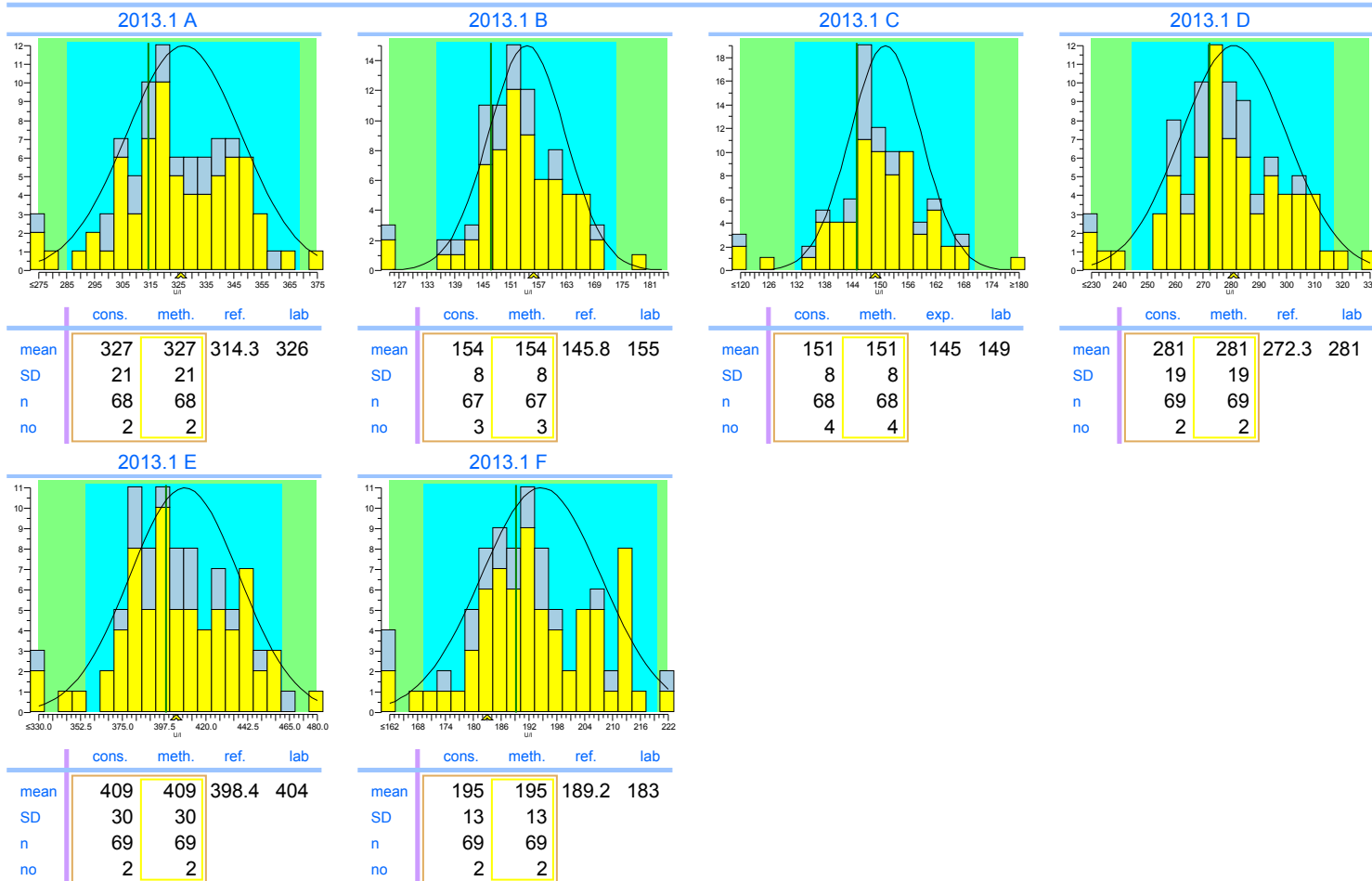
CK

units: U/I



	2013.1	cumulative
Trueness	+2.3%	+2.3%
Precision	1.9%	1.9%
Number	6	6
Outliers	0	0
Sigma-TE	6.0 2	6.0 2
Sigma-SA	6.0	6.0
Score pictogram		
Regression line	$0 + 1.022 \cdot x$	$0 + 1.022 \cdot x$

Consensus group IFCC traceerbaar
Method IFCC traceable



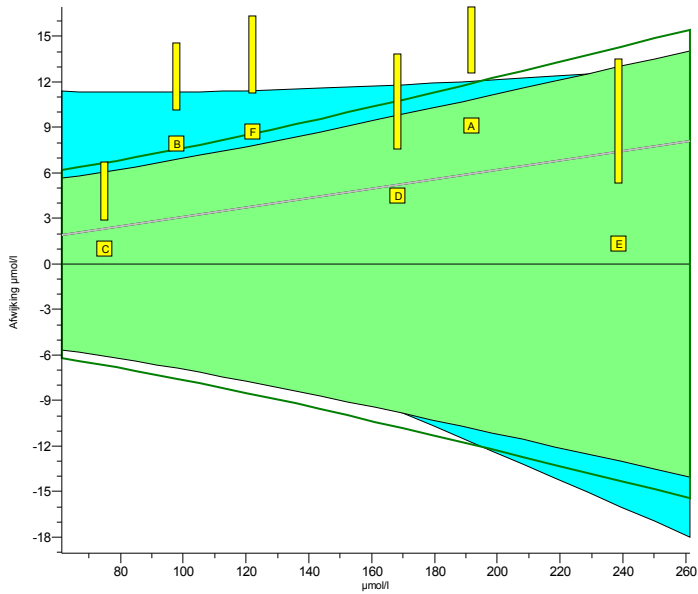
Legend





IFCC traceable IFCC non-traceable

INPUTS 2013.1

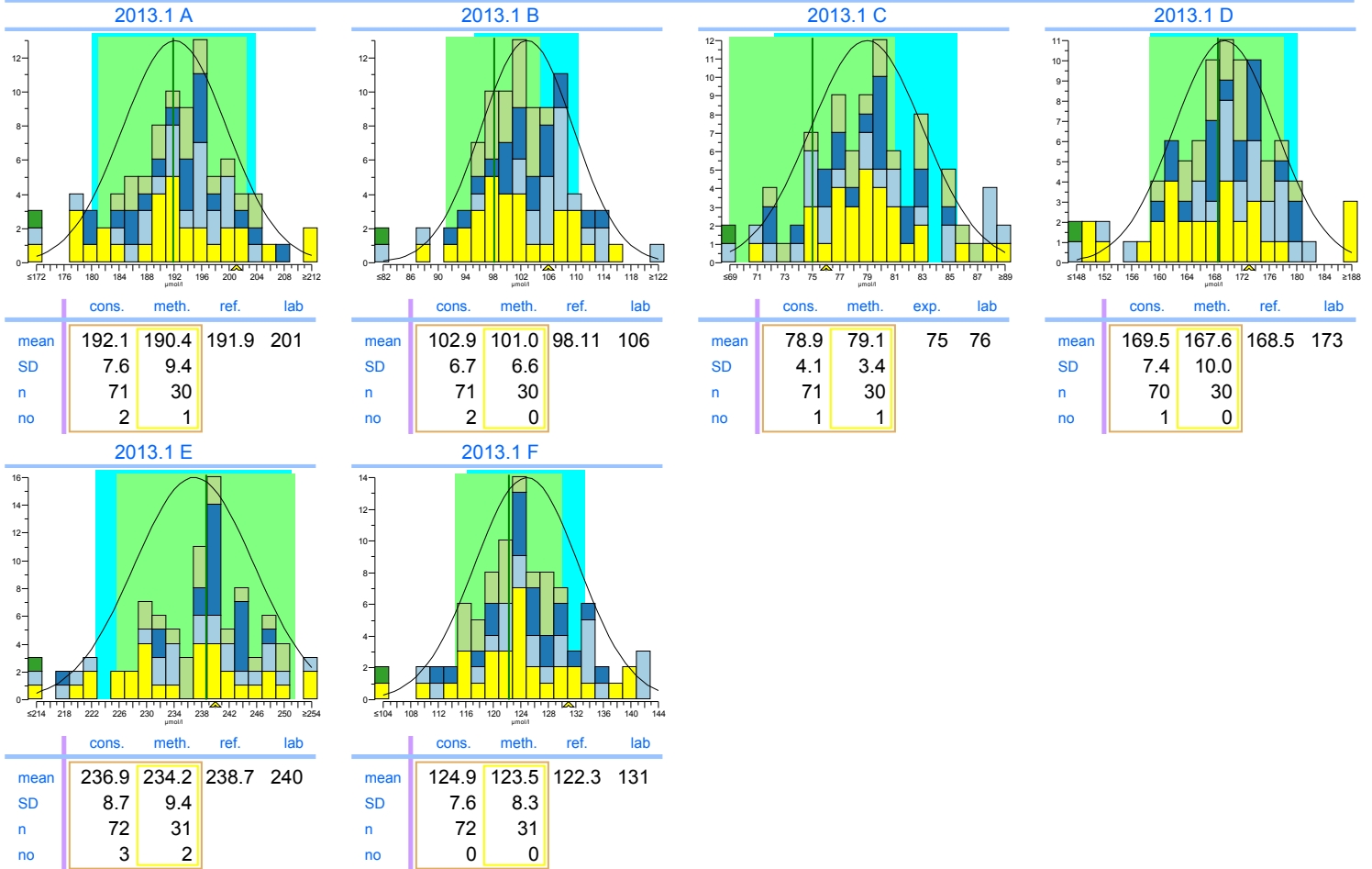
Creatinine

units: $\mu\text{mol/l}$



	2013.1	cumulative
Trueness	+3.6%	+3.6%
Precision	2.3%	2.3%
Number	6	6
Outliers	0	0
Sigma-TE	2.2	2.2
Sigma-SA	2.6 	2.6 
Score pictogram		
Regression line	$0.0 + 1.031.x$	$0.0 + 1.031.x$

Consensus group	Jaffe
Method	Alk. Picrate, kinetic with compensation



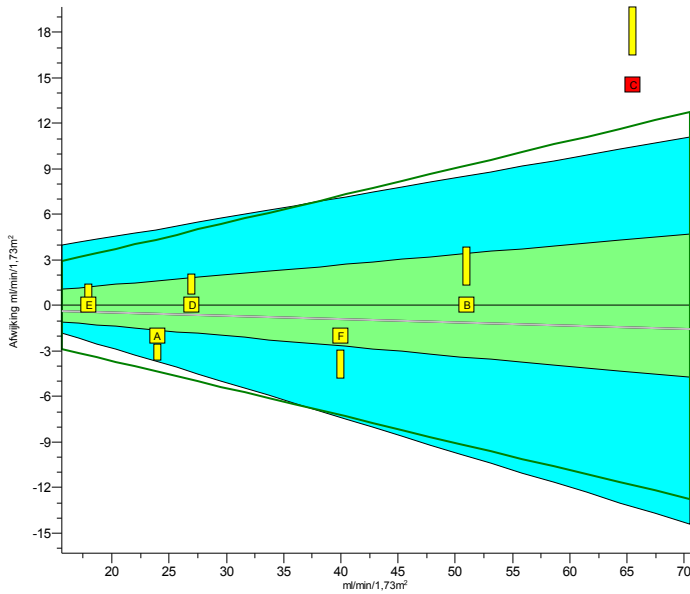
Legend

- Alk. Picrate, kinetic with compensation
- Alk. Picrate, kinetic
- Alk. Picrate, endpoint
- Enzymatic, automatic
- Other methods

INPUTs 2013.1

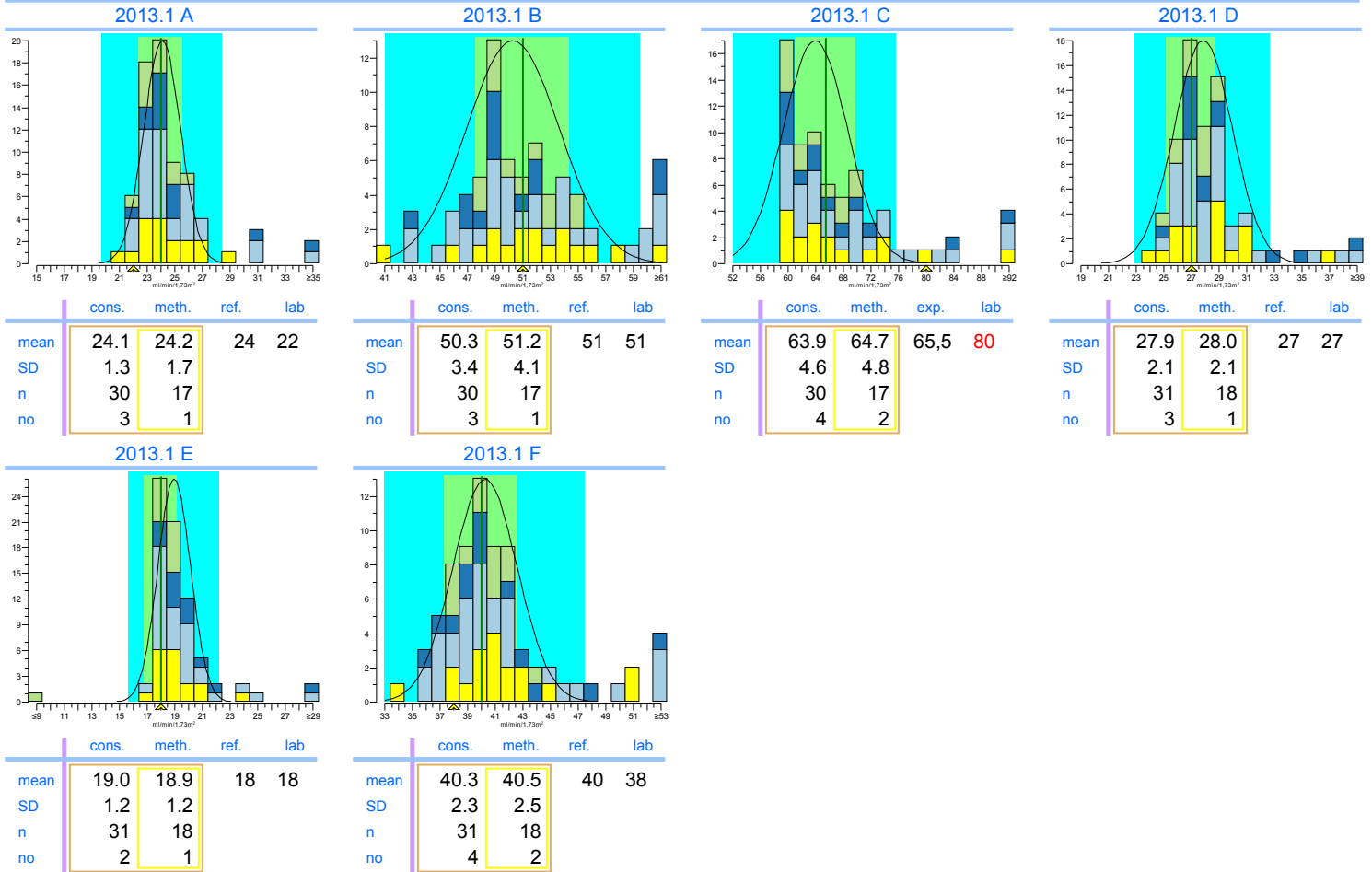
eGFR (F, 55, white)

units: ml/min/1,73m²



	2013.1	cumulative
Trueness	-2.5%	-2.5%
Precision	4.4%	4.4%
Number	6	6
Outliers	1	1
Sigma-TE	1.8	1.8
Sigma-SA	6.0 2	6.0 2
Score pictogram		
Regression line	<u>0.0 + 0.978.x</u>	<u>0.0 + 0.978.x</u>

Consensus group Jaffe
Method Alk. Picrate, kinetic with compensation



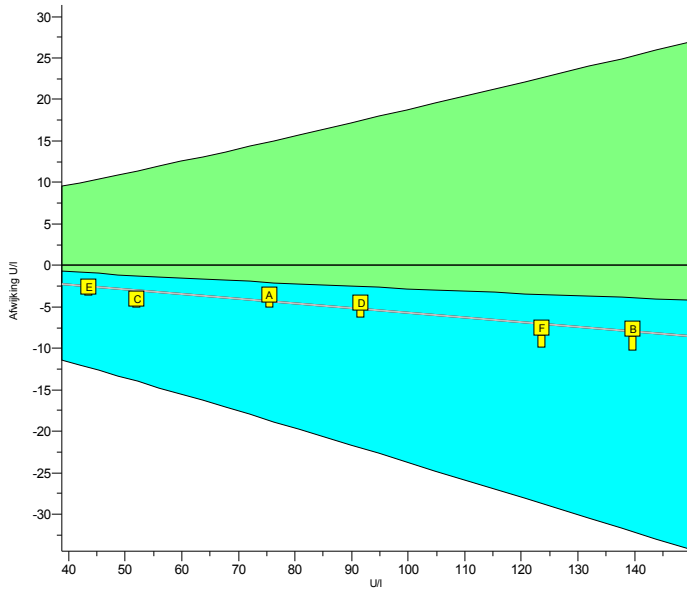
Legend

- Alk. Picrate, kinetic with compensation
- Other methods
- Alk. Picrate, kinetic
- Enzymatic, automatic

INPUTS 2013.1

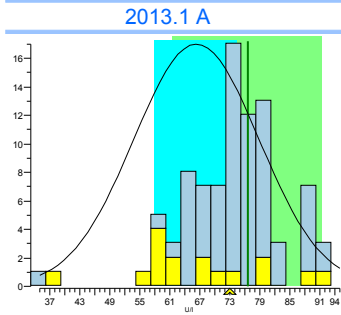
Gamma-GT

units: U/I

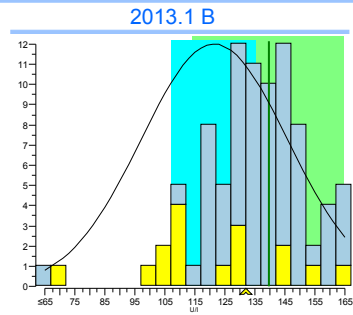


	2013.1	cumulative
Trueness	-5.7%	-5.7%
Precision	0.62%	0.62%
Number	6	6
Outliers	0	0
Sigma-TE	6.0 2	6.0 2
Sigma-SA	6.0	6.0
Score pictogram		
Regression line	$0.0 + 0.943.x$	$0.0 + 0.943.x$

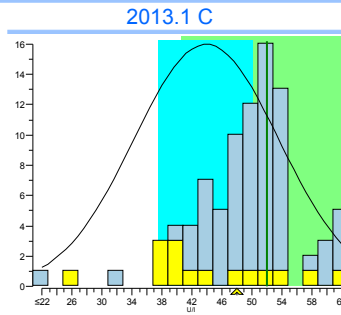
Consensus group: niet IFCC traceerbaar
Method: IFCC non-traceable



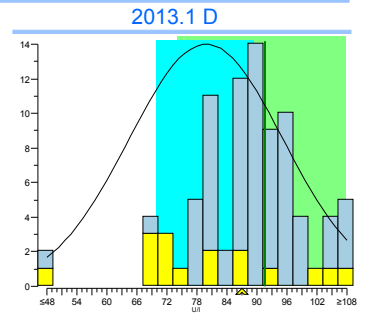
	cons.	meth.	ref.	lab
mean	65.3	65.3	75.6	72
SD	12.5	12.5		
n	16	16		
no	0	0		



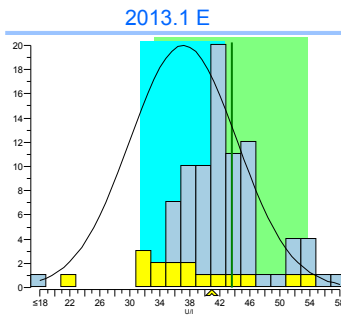
	cons.	meth.	ref.	lab
mean	121.5	121.5	139.7	132
SD	24.4	24.4		
n	16	16		
no	0	0		



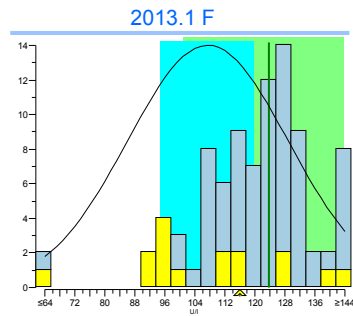
	cons.	meth.	exp.	lab
mean	43.9	43.9	52	48
SD	9.7	9.7		
n	15	15		
no	0	0		



	cons.	meth.	ref.	lab
mean	79.8	79.8	91.6	87
SD	15.4	15.4		
n	16	16		
no	0	0		



	cons.	meth.	ref.	lab
mean	37.1	37.1	43.6	41
SD	7.2	7.2		
n	16	16		
no	0	0		



	cons.	meth.	ref.	lab
mean	107.5	107.5	123.6	116
SD	21.4	21.4		
n	16	16		
no	0	0		

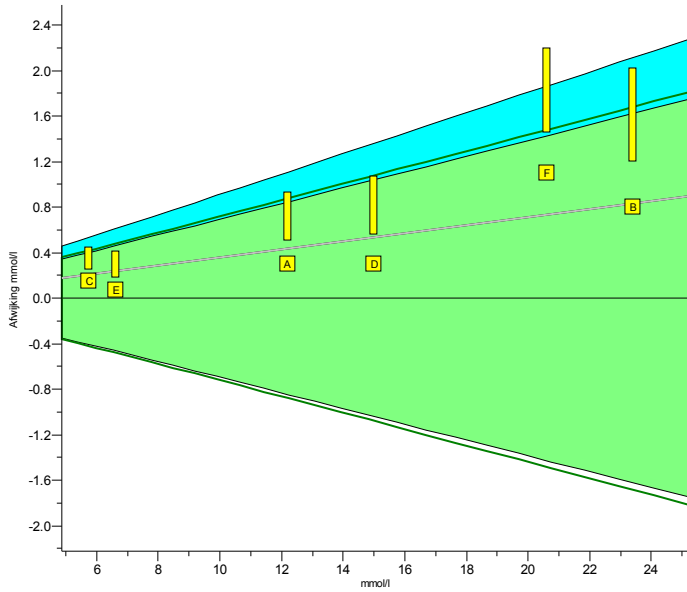
Legend

IFCC non-traceable IFCC traceable

INPUTS 2013.1

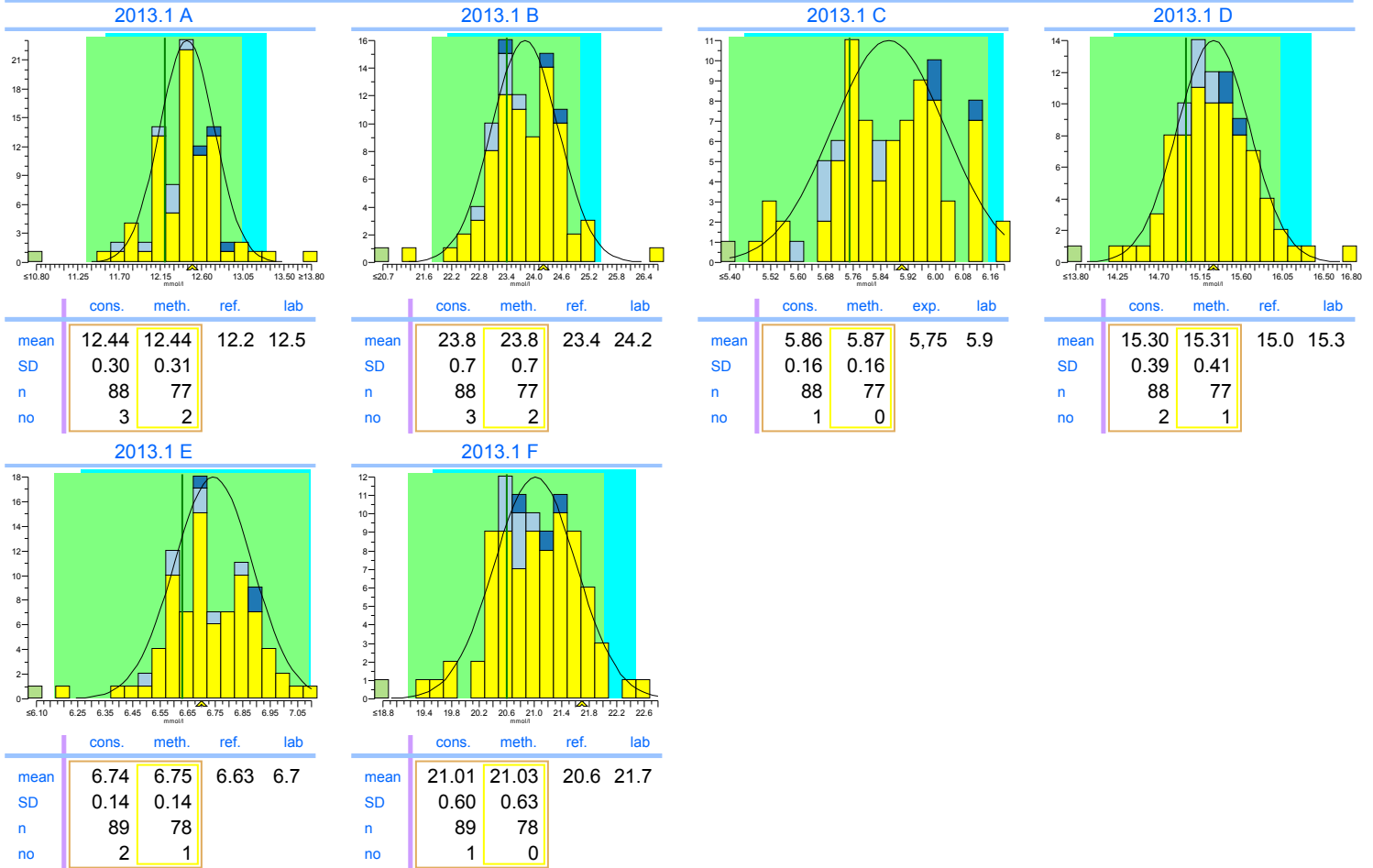
Glucose

units: mmol/l



	2013.1	cumulative
Trueness	+3.3%	+3.3%
Precision	1.5%	1.5%
Number	6	6
Outliers	0	0
Sigma-TE	3.8	3.8
Sigma-SA	4.0	4.0
Score pictogram		
Regression line	$0.00 + 1.036.x$	$0.00 + 1.036.x$

Consensus group: Natte chemie
Method: Hexokinase, automatic



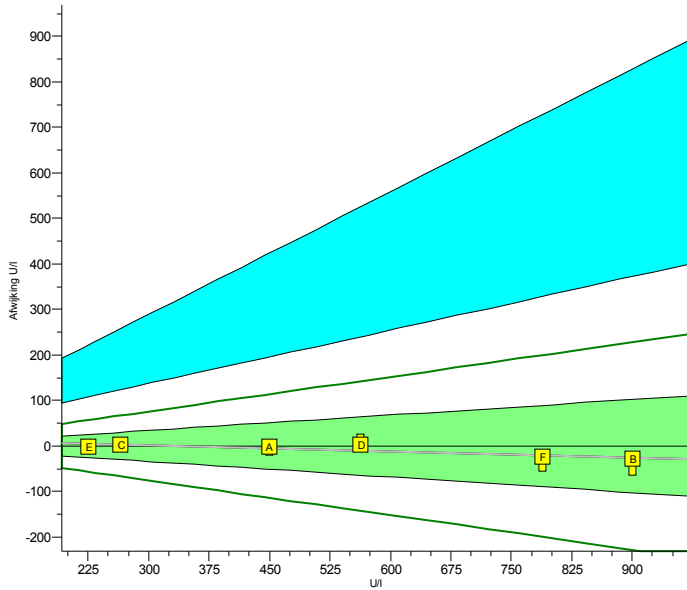
Legend

- Hexokinase, automatic
- Glucose-oxidase, amperometric, H2O2
- Glucose-oxidase/POD, automatic
- Other methods

INPUTS 2013.1

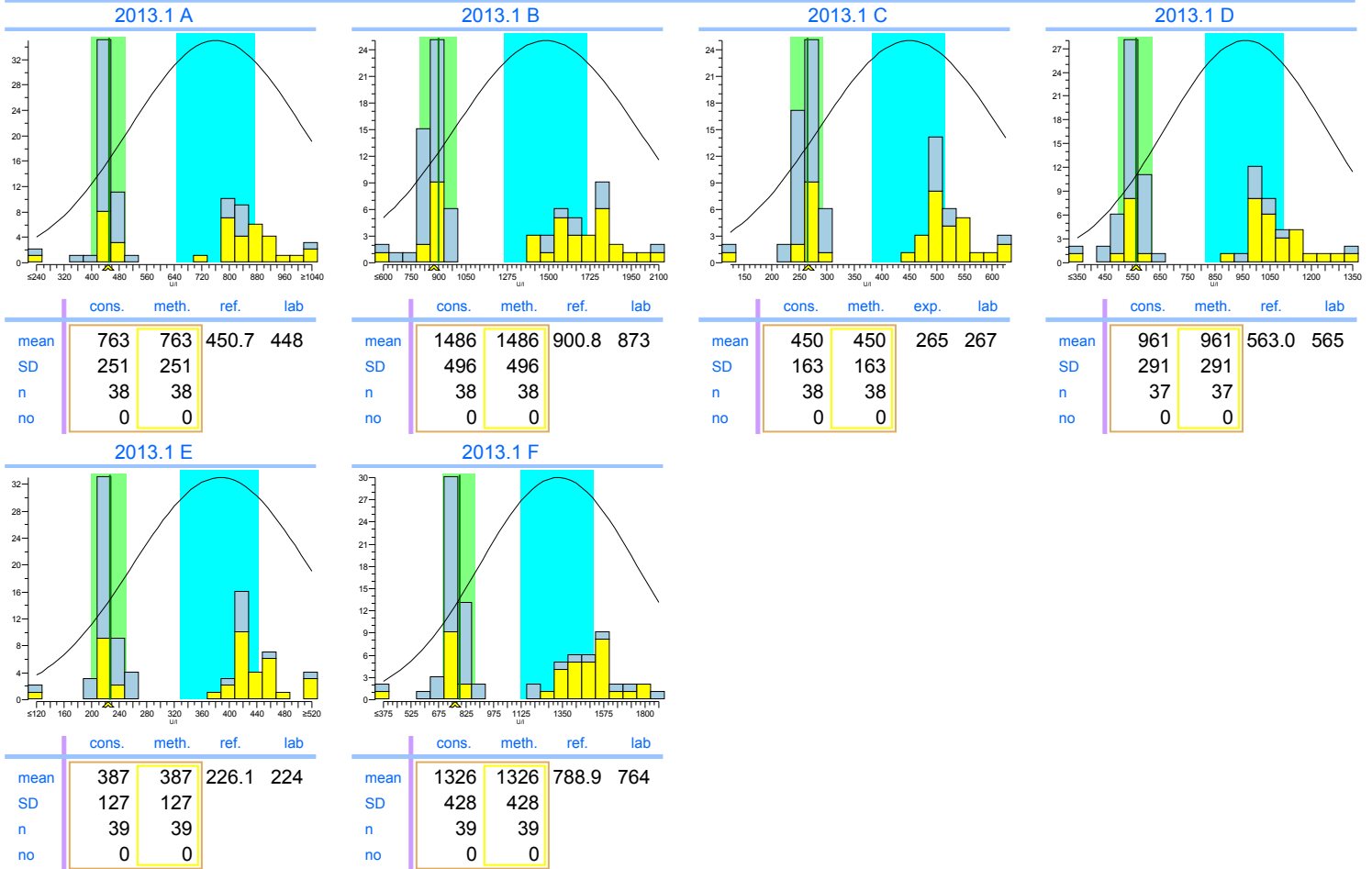
LD

units: U/I



	2013.1	cumulative
Trueness	-1.7%	-1.7%
Precision	0.68%	0.68%
Number	6	6
Outliers	0	0
Sigma-TE	6.0	6.0
Sigma-SA	6.0 2	6.0 2
Score pictogram		
Regression line	$14 + 0.957 \cdot x$	$14 + 0.957 \cdot x$

Consensus group niet IFCC traceerbaar
Method IFCC non-traceable



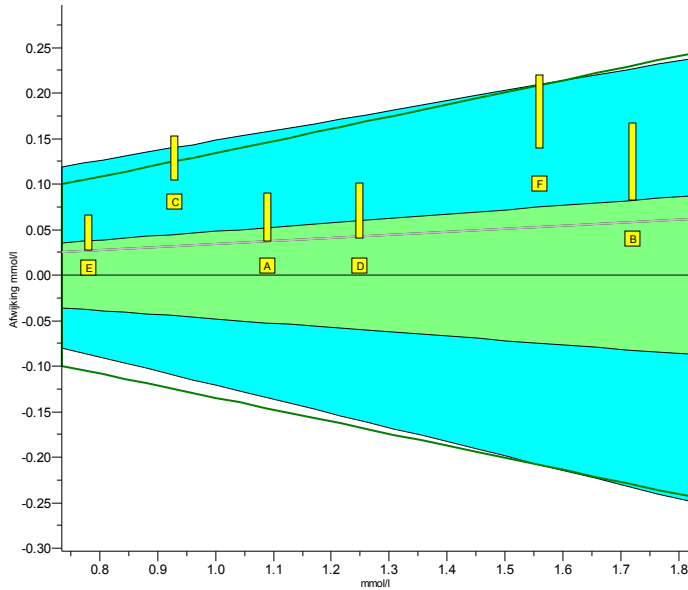
Legend

 IFCC non-traceable IFCC traceable

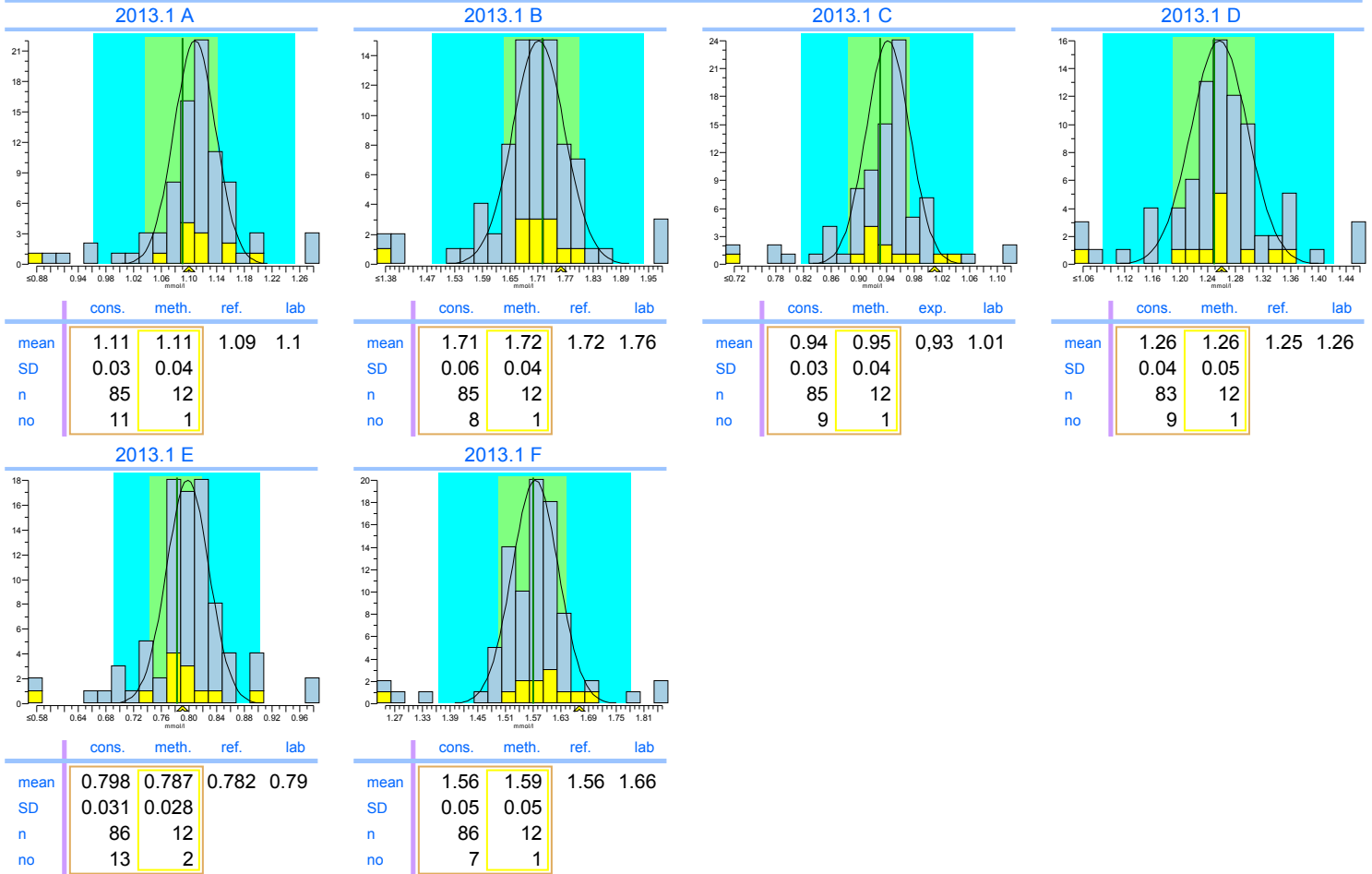
INPUTS 2013.1

Magnesium

units: mmol/l



	2013.1	cumulative
Trueness	+3.4%	+3.4%
Precision	3.2%	3.2%
Number	6	6
Outliers	0	0
Sigma-TE	1.5	1.5
Sigma-SA	5.9 2	5.9 2
Score pictogram		
Regression line	$0.00 + 1.034.x$	$0.00 + 1.034.x$
Consensus group	Overall	
Method	Other methods	



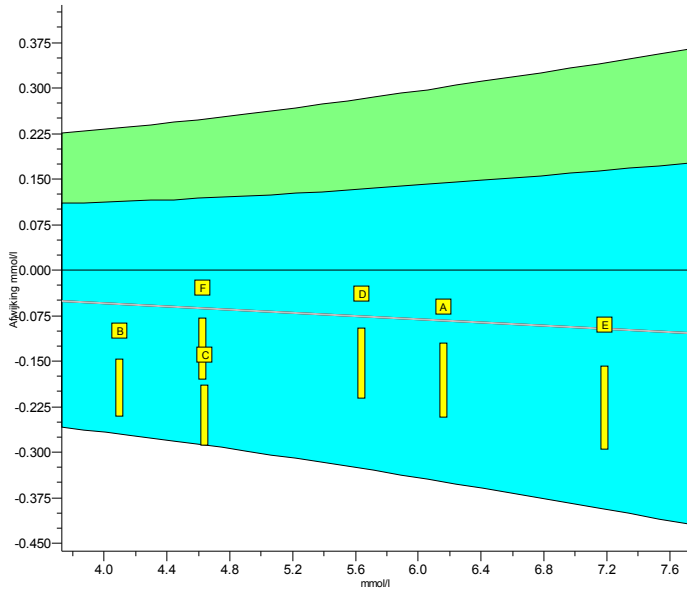
Legend



INPUTS 2013.1

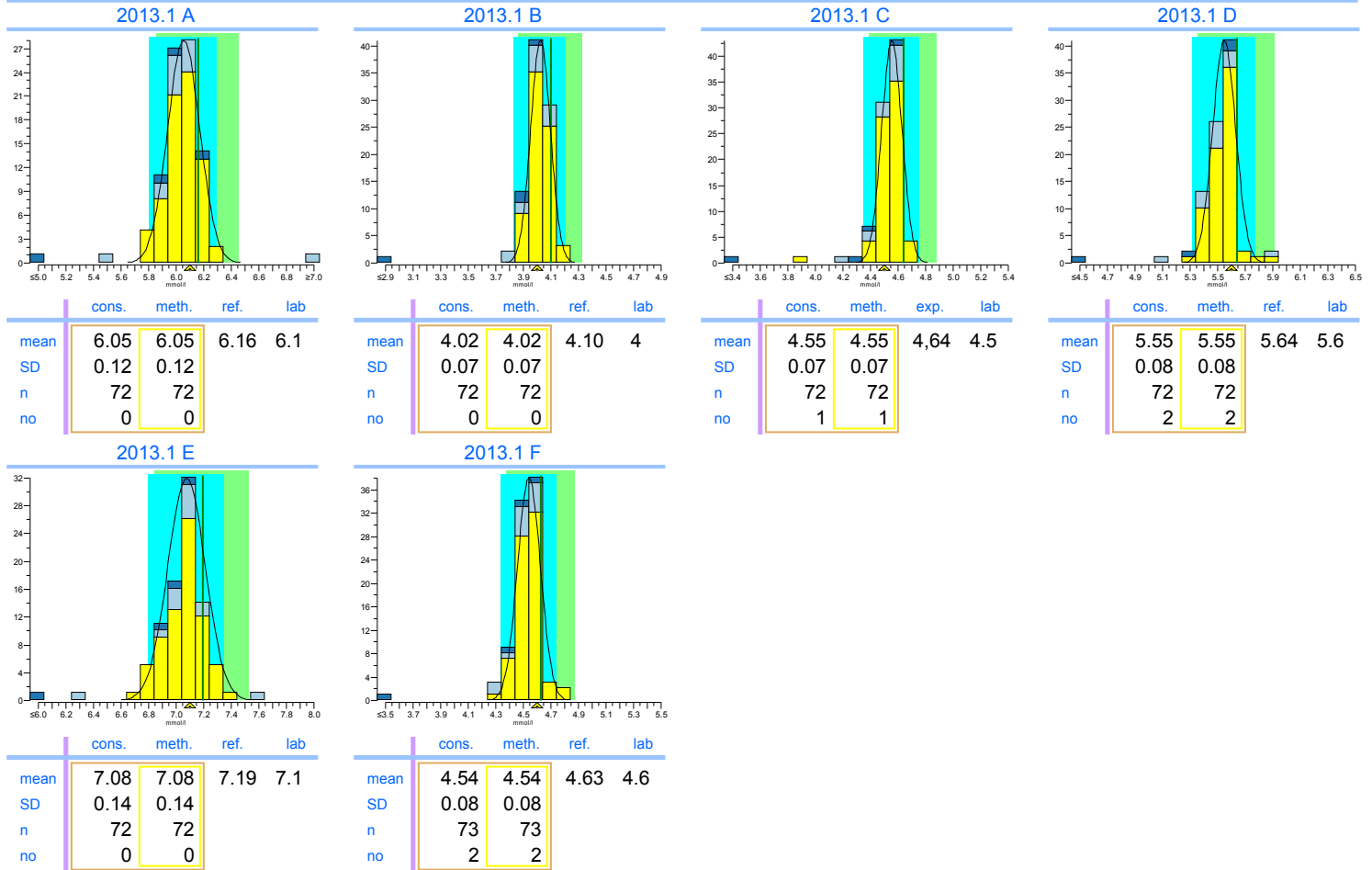
Potassium

units: mmol/l



	2013.1	cumulative
Trueness	-1.4%	-1.4%
Precision	0.85%	0.85%
Number	6	6
Outliers	0	0
Sigma-TE	5.1 2	5.1 2
Sigma-SA	4.0	4.0
Score pictogram		
Regression line	$0.00 + 0.987 \cdot x$	$0.00 + 0.987 \cdot x$

Consensus group ISE verdund/Vlamfotometrie
Method ISE indirect (with predilution)



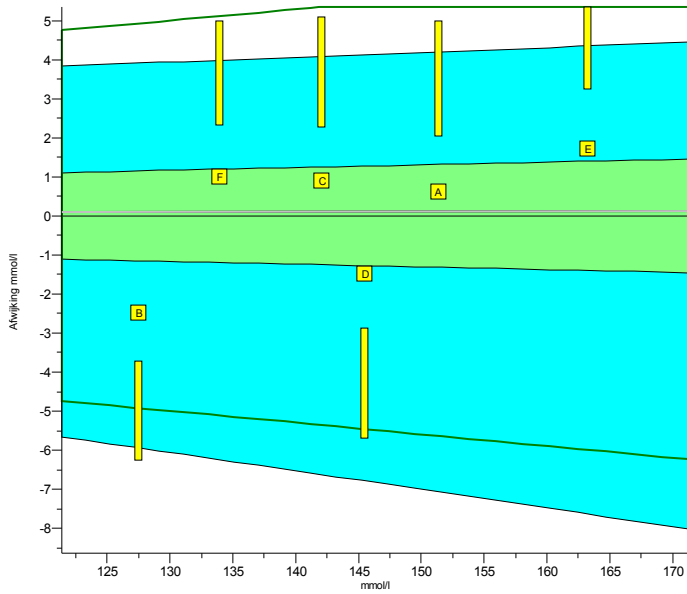
Legend

- ISE indirect (with predilution)
- ISE direct (no predilution)
- Other methods

INPUTS 2013.1

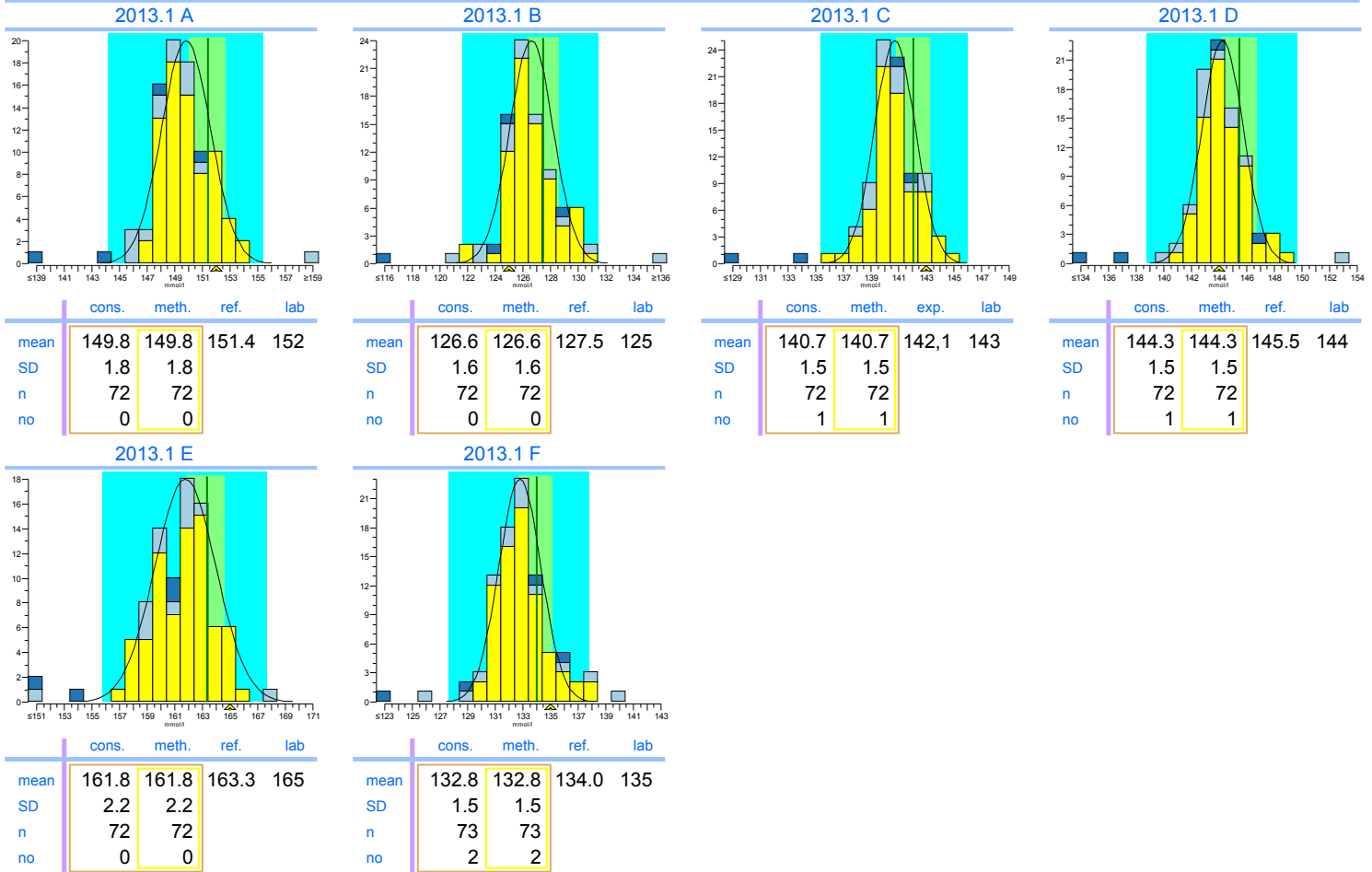
Sodium

units: mmol/l



	2013.1	cumulative
Trueness	+0.02%	+0.02%
Precision	1.2%	1.2%
Number	6	6
Outliers	0	0
Sigma-TE	0.7	0.7
Sigma-SA	4.3 1	4.3 1
Score pictogram		
Regression line	$0.0 + 1.001 \cdot x$	$0.0 + 1.001 \cdot x$

Consensus group ISE verdund/Vlamfotometrie
Method ISE indirect (with predilution)



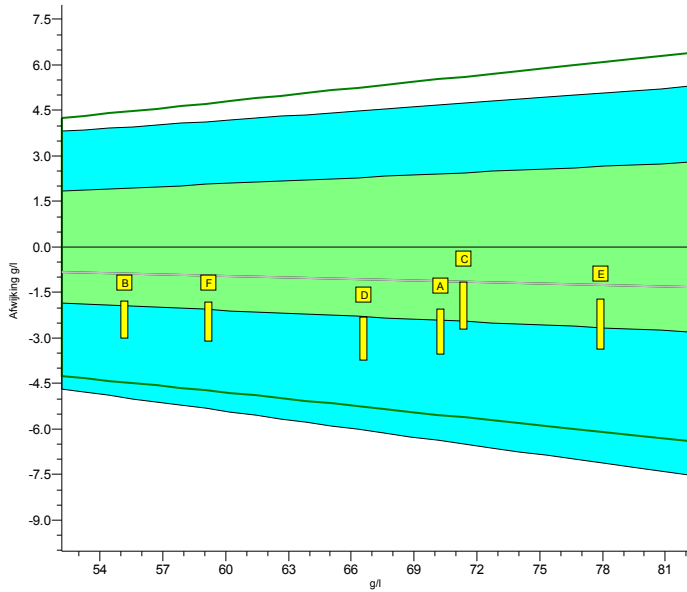
Legend

- ISE indirect (with predilution)
- ISE direct (no predilution)
- Other methods

INPUTS 2013.1

Total Protein

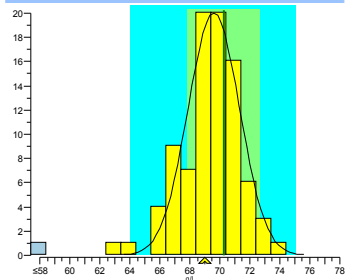
units: g/l



	2013.1	cumulative
Trueness	-1.6%	-1.6%
Precision	0.89%	0.89%
Number	6	6
Outliers	0	0
Sigma-TE	2.8	2.8
Sigma-SA	6.0 2	6.0 2
Score pictogram		
Regression line	$0.0 + 0.984.x$	$0.0 + 0.984.x$

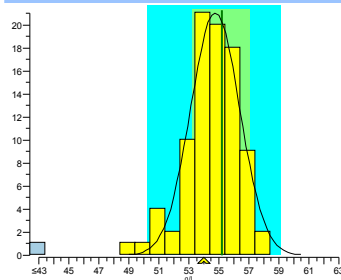
Consensus group: Biureet
Method: Biurete, automatic

2013.1 A



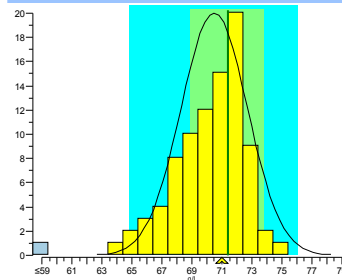
	cons.	meth.	ref.	lab
mean	69.6	69.6	70.3	69
SD	1.7	1.7		
n	88	88		
no	2	2		

2013.1 B



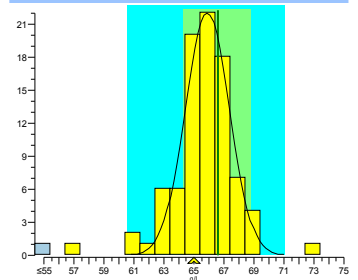
	cons.	meth.	ref.	lab
mean	54.8	54.8	55.2	54
SD	1.6	1.6		
n	88	88		
no	1	1		

2013.1 C



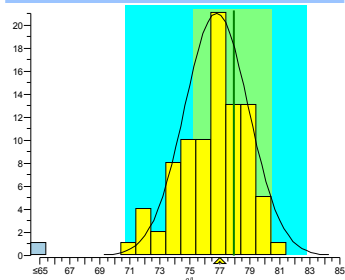
	cons.	meth.	exp.	lab
mean	70.5	70.5	71.4	71
SD	2.2	2.2		
n	87	87		
no	0	0		

2013.1 D



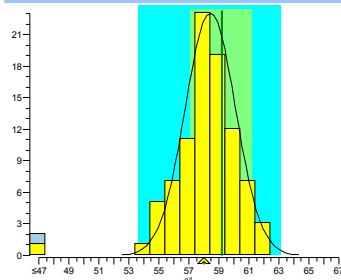
	cons.	meth.	ref.	lab
mean	65.9	65.9	66.6	65
SD	1.5	1.5		
n	88	88		
no	4	4		

2013.1 E



	cons.	meth.	ref.	lab
mean	76.8	76.8	77.9	77
SD	2.1	2.1		
n	88	88		
no	0	0		

2013.1 F



	cons.	meth.	ref.	lab
mean	58.4	58.4	59.2	58
SD	1.7	1.7		
n	89	89		
no	1	1		

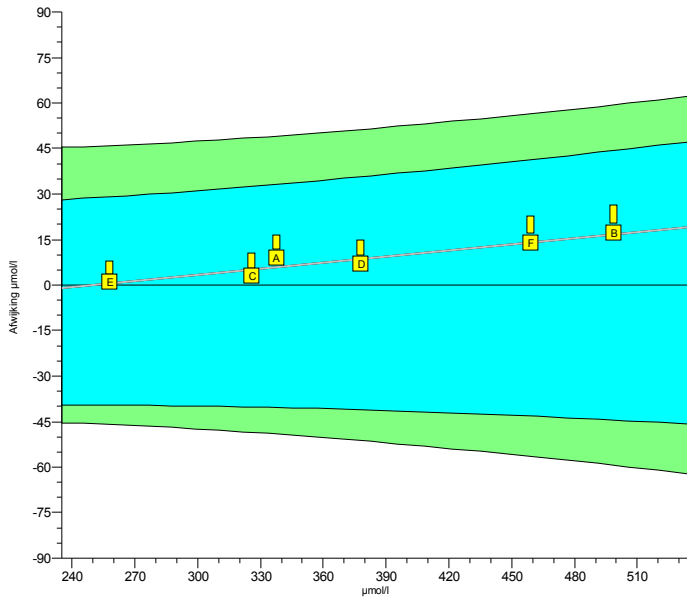
Legend

Biurete, automatic Other methods

INPUTS 2013.1

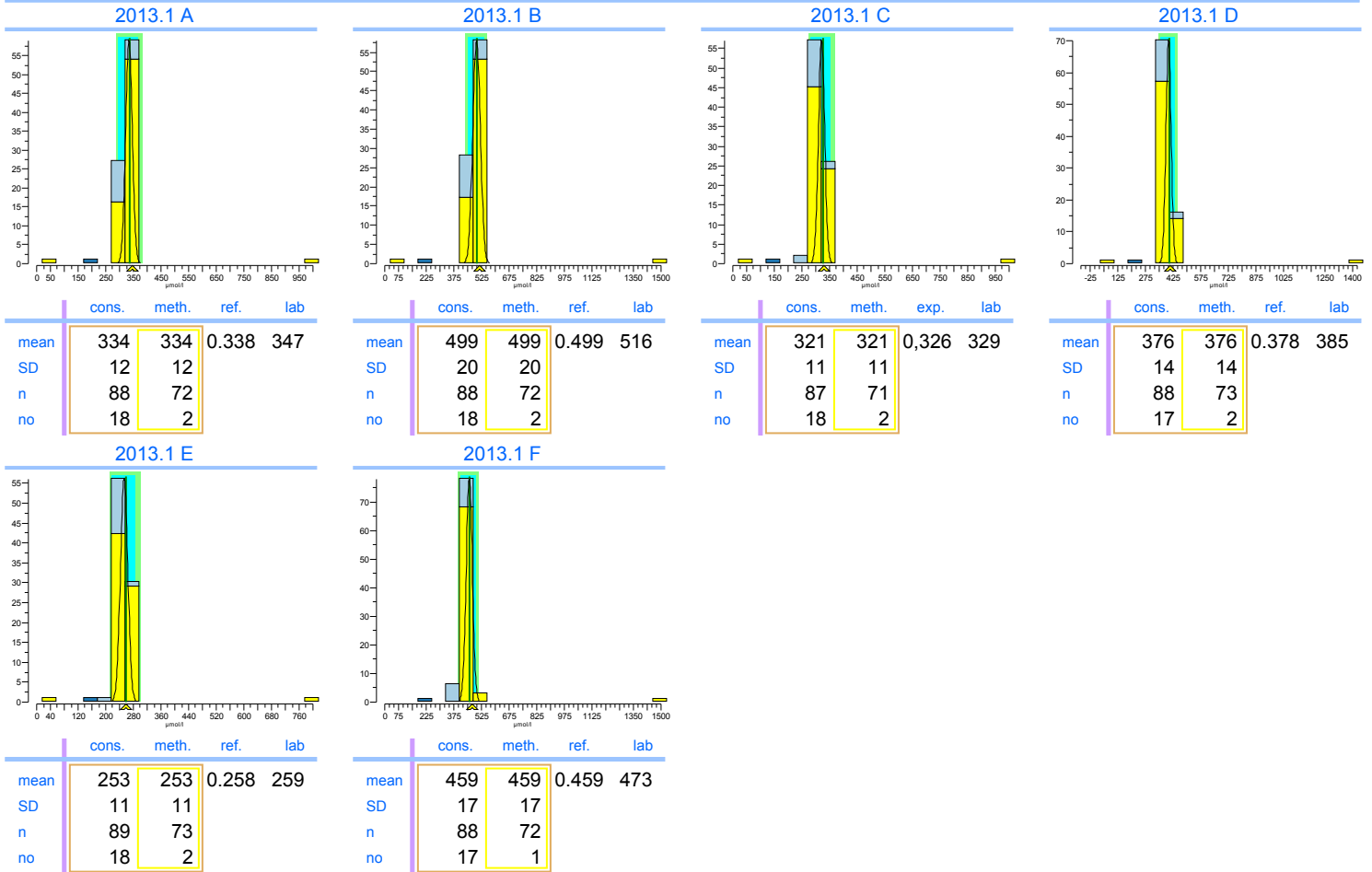
Urate

units: $\mu\text{mol/l}$



	2013.1	cumulative
Trueness	+2.3%	+2.3%
Precision	0.58%	0.58%
Number	6	6
Outliers	0	0
Sigma-TE	6.0 2	6.0 2
Sigma-SA	6.0	6.0
Score pictogram		
Regression line	$0 + 1.066.x$	$0 + 1.066.x$

Consensus group: Colorimetrisch
Method: Uricase, colorim., automatic



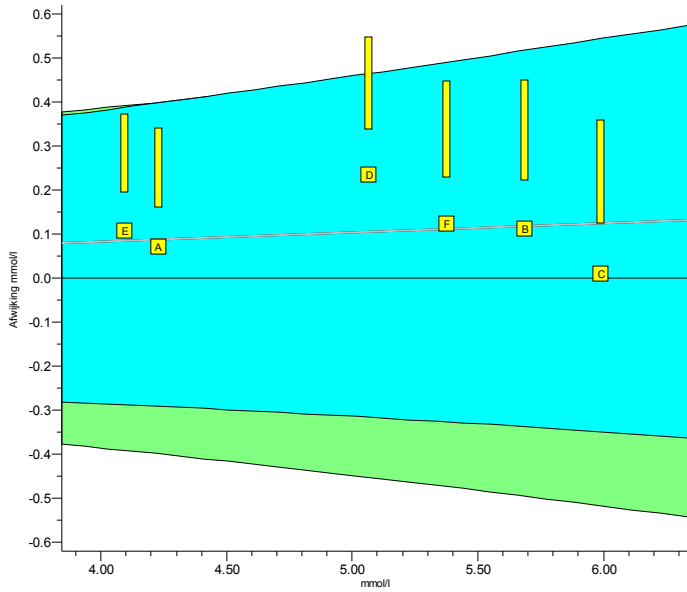
Legend

- Uricase, colorim., automatic
- Uricase, differential UV, automatic
- Overige methoden

INPUTS 2013.1

Cholesterol

units: mmol/l



	2013.1	cumulative
Trueness	+2.1%	+2.1%
Precision	1.6%	1.6%
Number	6	6
Outliers	0	0
Sigma-TE	5.0 2	5.0 2
Sigma-SA	4.2	4.2
Score pictogram		
Regression line	<u>0.00 + 1.021.x</u>	<u>0.00 + 1.021.x</u>

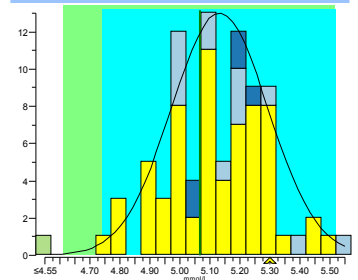
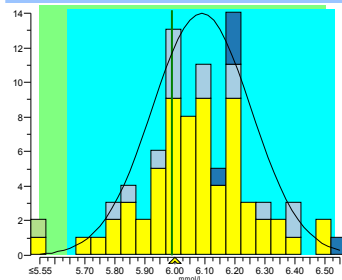
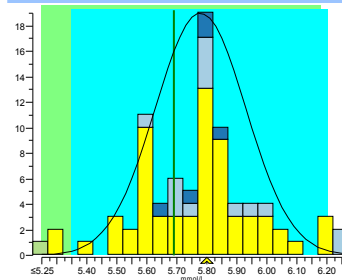
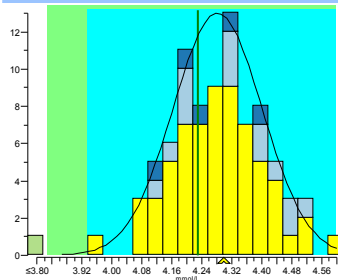
Consensus group	Enzymatisch
Method	Enzymatic, automatic, discrete

2013.1 A

2013.1 B

2013.1 C

2013.1 D



	cons.	meth.	ref.	lab
mean	4.28	4.28	4.230	4.3
SD	0.12	0.12		
n	83	64		
no	0	0		

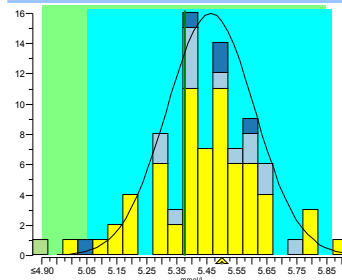
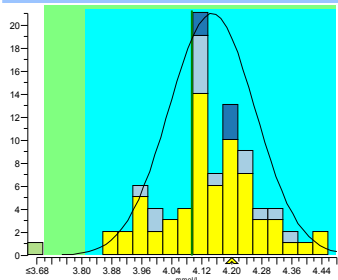
	cons.	meth.	ref.	lab
mean	5.78	5.78	5.689	5.8
SD	0.15	0.18		
n	83	64		
no	4	2		

	cons.	meth.	exp.	lab
mean	6.09	6.08	5.99	6
SD	0.16	0.17		
n	83	64		
no	1	1		

	cons.	meth.	ref.	lab
mean	5.13	5.12	5.066	5.3
SD	0.16	0.17		
n	82	64		
no	0	0		

2013.1 E

2013.1 F



	cons.	meth.	ref.	lab
mean	4.15	4.14	4.094	4.2
SD	0.11	0.13		
n	84	65		
no	0	0		

	cons.	meth.	ref.	lab
mean	5.46	5.45	5.377	5.5
SD	0.15	0.16		
n	84	65		
no	2	2		

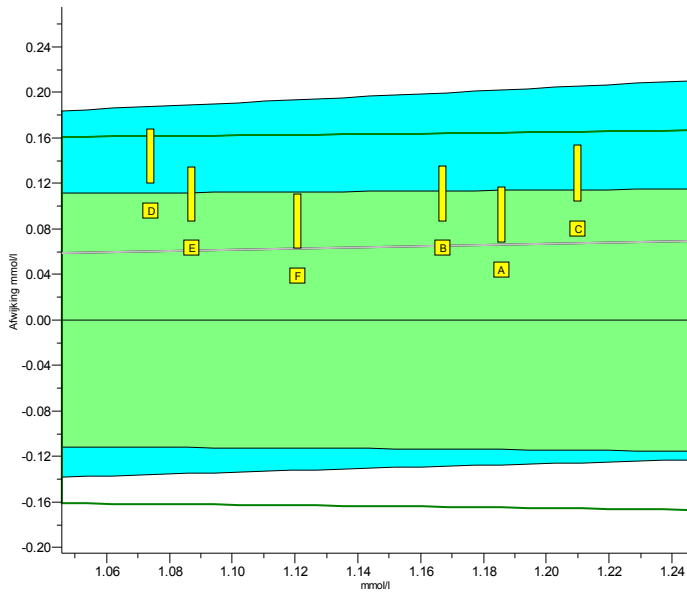
Legend

- Enzymatic, automatic, discrete
- Enzymatic, automatic, kinetic
- Abell-Kendall reference values
- Overige methoden

INPUTS 2013.1

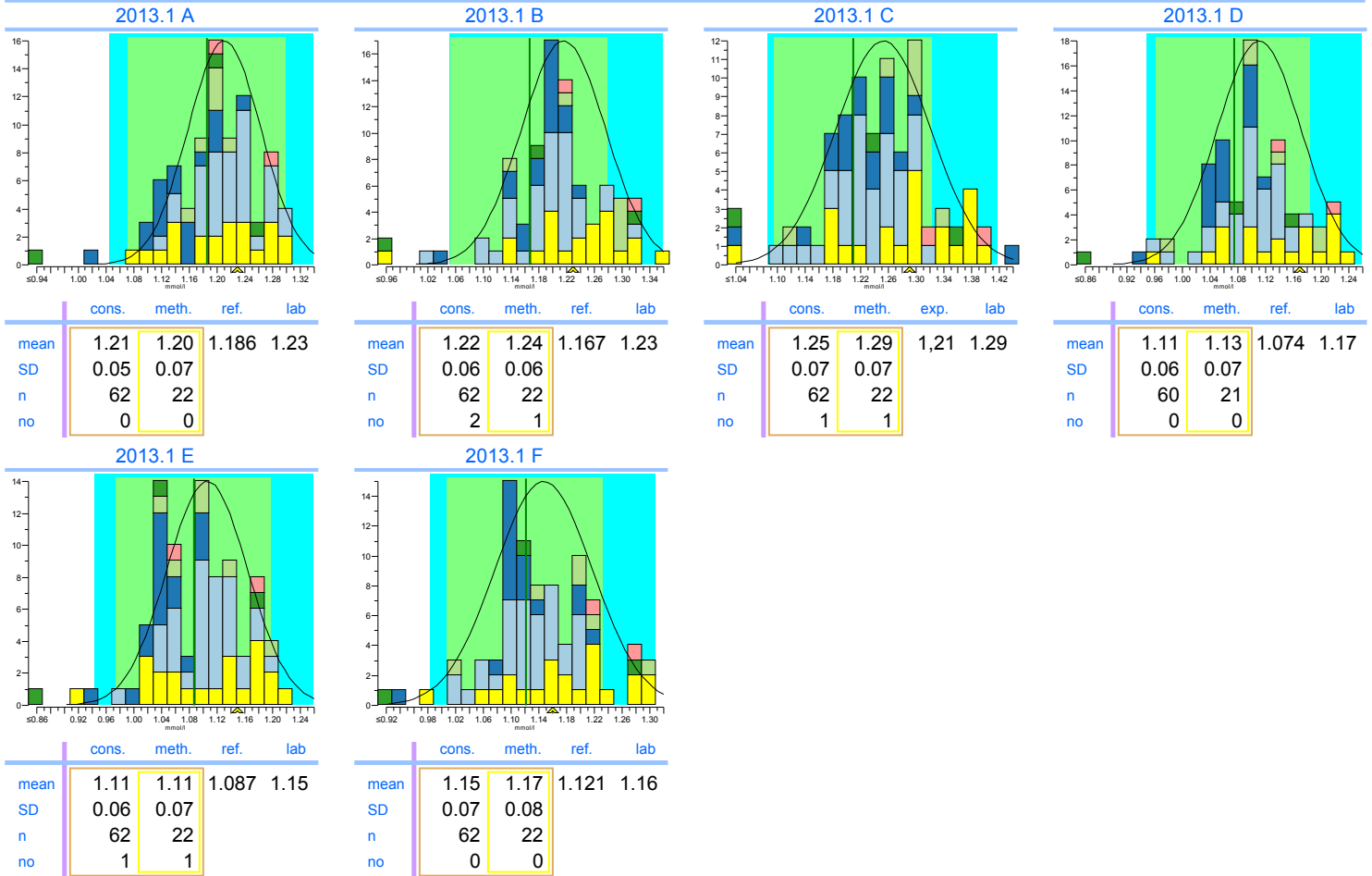
HDL-Cholesterol

units: mmol/l



	2013.1	cumulative
Trueness	+5.6%	+5.6%
Precision	1.7%	1.7%
Number	6	6
Outliers	0	0
Sigma-TE	3.3	3.3
Sigma-SA	5.9 2	5.9 2
Score pictogram		
Regression line	$0.00 + 1.056 \cdot x$	$0.00 + 1.056 \cdot x$

Consensus group	Direct
Method	Accelerator Selective Detergent ("Ultra HDL")



Legend

- Accelerator Selective Detergent ("Ultra HDL")
- PEG modified enzyme, PEGME (Kyowa Medex)
- Immunoinhibition
- Catalase method (Denka Seiken)
- Overige methoden
- Precipitation Technique