



3699 C. Lippiatt
Pinderfields Hospital
-

Groot Brittannië

INPUTS 2013.1

Survey	INPUTS 2013.1
Start date	January, 1 2013
Supervisor	dr. C. Weykamp MCA Laboratory Streekziekenhuis Koningin Beatrix Winterswijk
Subscriptions	93
Result sets	91

Scores	Your score	MAP	reported
Quantitative	30	38	



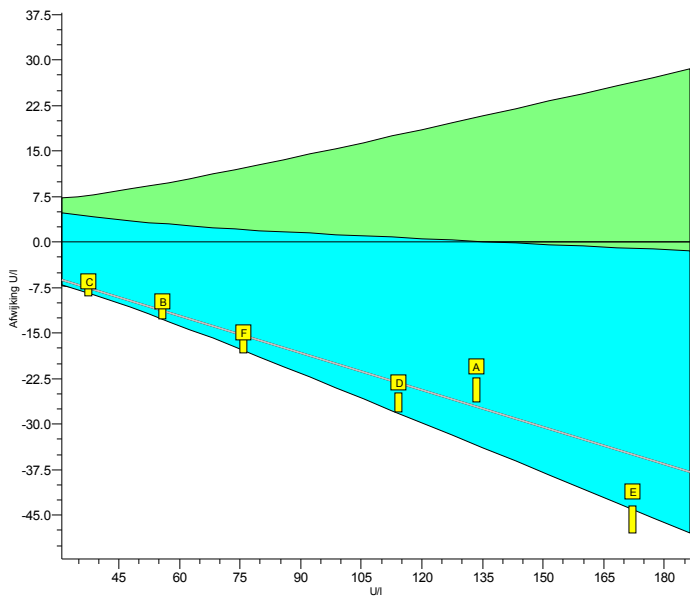
INPUTS 2013.1

Analyte		Trueness				Precision		Performance			
		your mean	ref.	cons.	SDt	your prec.	SDbl	this survey	PS	cumulative PSc	
ALAT	U/l	78.8	98.2	86.9	10.1	1.2	2.7		0		0
Alk. Phosphatase	U/l	183	188	173	15	3	2		2		2
Amylase	U/l	177	207	201	8	3	2		2		2
ASAT	U/l	64.2	78.6	71.5	6.8	0.8	1.6		0		0
Calcium	mmol/l	2.50	2.46	2.47	0.07	0.02	0.02		2		2
Chloride	mmol/l	101.2	100.0	100.8	1.8	0.7	0.9		2		2
CK	U/l	258	244	253	18	5	3		2		2
Creatinine	µmol/l	157.3	149.1	150.9	7.1	4.7	4.2		0		0
eGFR (F, 55, white)	ml/min/1,73m ²	33.7	37.6	37.6	2.7	3.6	1.5		2		2
Gamma-GT	U/l	86.2	87.7	86.3	8.6	0.7	1.2		2		2
Glucose	mmol/l	13.95	13.93	14.19	0.44	0.26	0.18		1		1
LD	U/l	530	532	523	33	6	9		2		2
Magnesium	mmol/l	1.24	1.22	1.23	0.04	0.02	0.02		2		2
Potassium	mmol/l	5.30	5.39	5.28	0.09	0.04	0.03		2		2
Sodium	mmol/l	142.3	144.0	141.8	2.0	0.9	0.7		2		2
Total Protein	g/l	65.7	66.8	66.0	1.8	0.5	0.7		2		2
Urate	mmol/l	0.383	0.376	0.374	0.015	0.003	0.004		2		2
Cholesterol	mmol/l	5.18	5.07	5.15	0.14	0.06	0.05		2		2
HDL-Cholesterol	mmol/l	1.09	1.14	1.17	0.06	0.03	0.03		1		1
Total :									30		30

INPUTS 2013.1

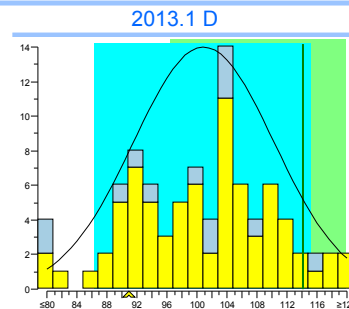
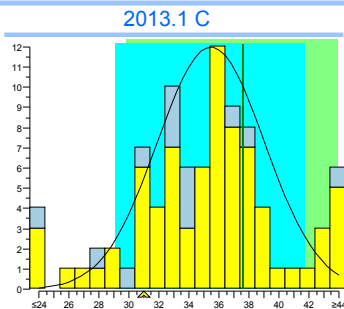
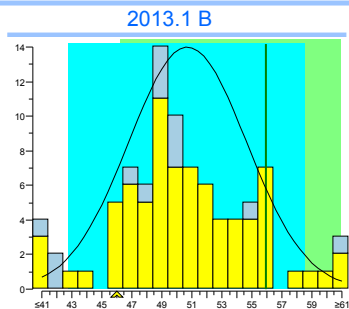
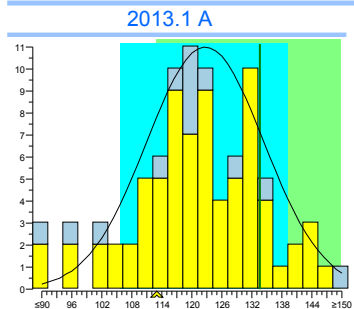
ALAT

units: U/I



	2013.1	cumulative
Trueness	-20%	-20%
Precision	1.3%	1.3%
Number	6	6
Outliers	0	0
Sigma-TE	-0.6 0	-0.6 0
Sigma-SA	-1.9	-1.9
Score pictogram		
Regression line	$0.0 + 0.796.x$	$0.0 + 0.796.x$

Consensus group IFCC traceerbaar
Method IFCC traceable

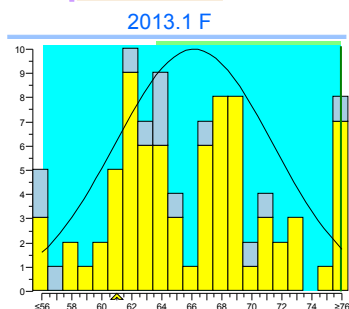
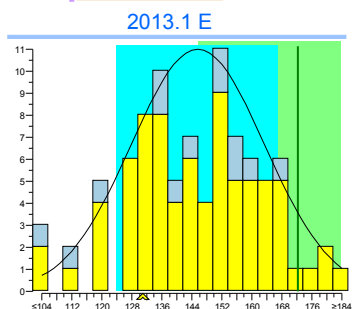


	cons.	meth.	ref.	lab
mean	122.7	122.7	133.5	113
SD	11.8	11.8		
n	75	75		
no	1	1		

	cons.	meth.	ref.	lab
mean	50.7	50.7	55.9	46
SD	3.9	3.9		
n	76	76		
no	3	3		

	cons.	meth.	exp.	lab
mean	35.5	35.5	37.6	31
SD	3.6	3.6		
n	76	76		
no	7	7		

	cons.	meth.	ref.	lab
mean	100.9	100.9	114.2	91
SD	9.4	9.4		
n	76	76		
no	3	3		



	cons.	meth.	ref.	lab
mean	146	146	172.2	131
SD	18	18		
n	77	77		
no	1	1		

	cons.	meth.	ref.	lab
mean	66.1	66.1	75.9	61
SD	5.3	5.3		
n	77	77		
no	3	3		

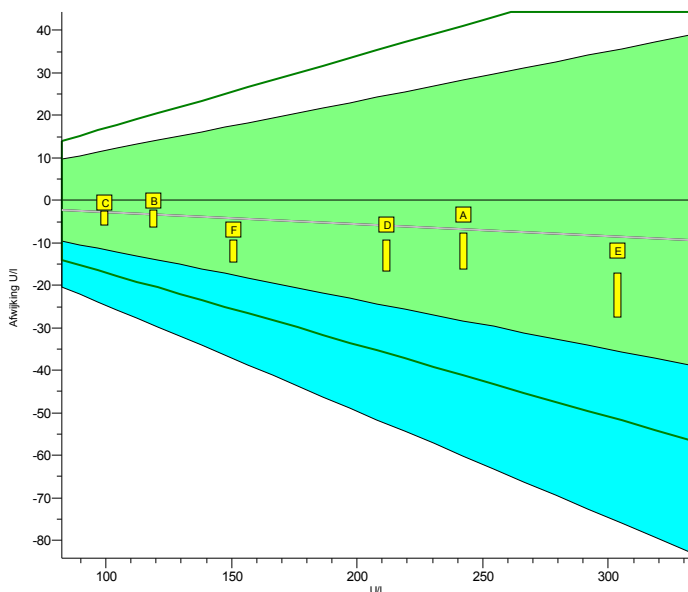
Legend

 IFCC traceable IFCC non-traceable

INPUTS 2013.1

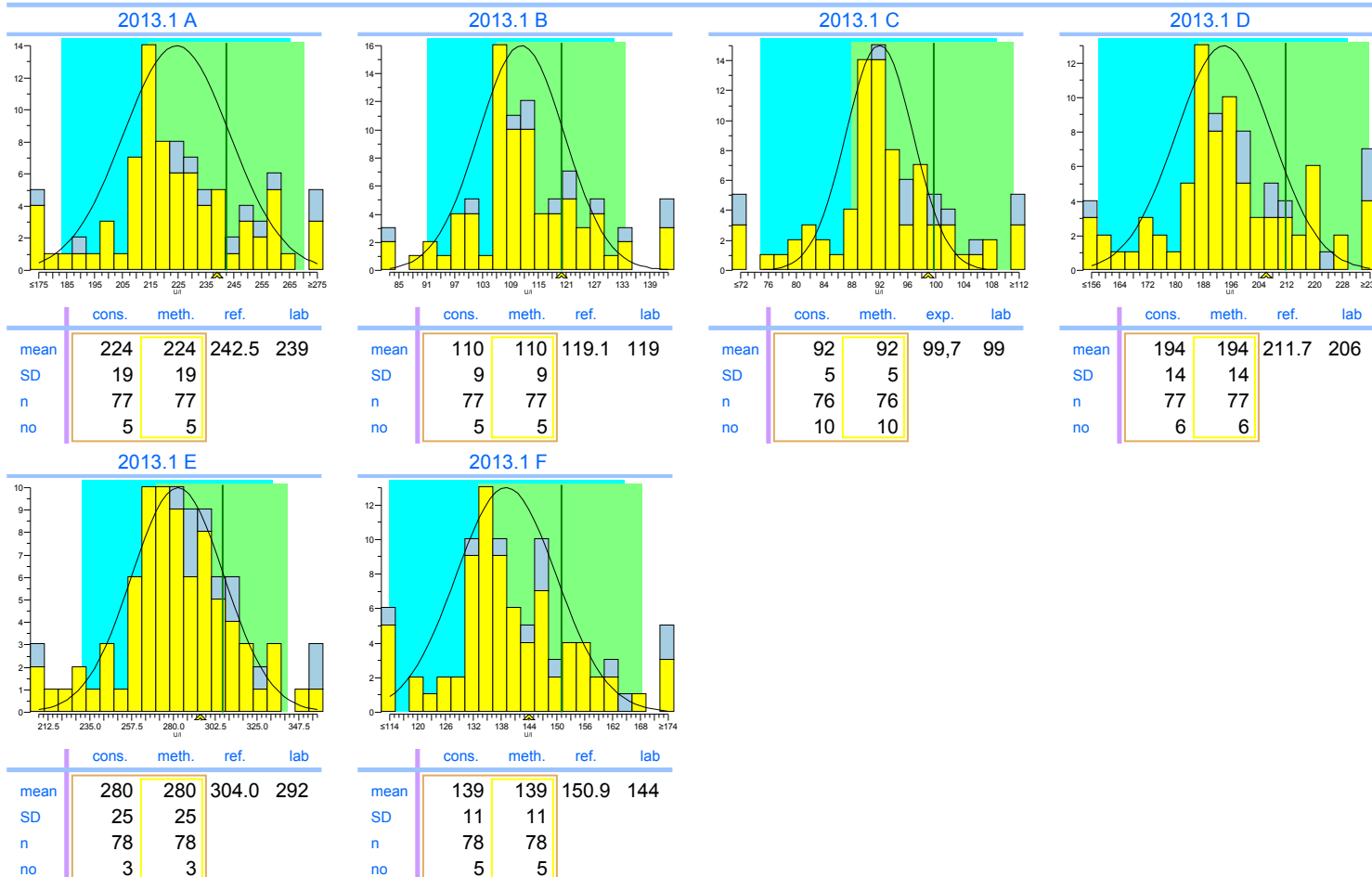
Alk. Phosphatase

units: U/I



	2013.1	cumulative
Trueness	-2.6%	-2.6%
Precision	1.5%	1.5%
Number	6	6
Outliers	0	0
Sigma-TE	6.0	6.0
Sigma-SA	6.0 2	6.0 2
Score pictogram		
Regression line	$0 + 0.972.x$	$0 + 0.972.x$

Consensus group	IFCC traceerbaar
Method	IFCC traceable



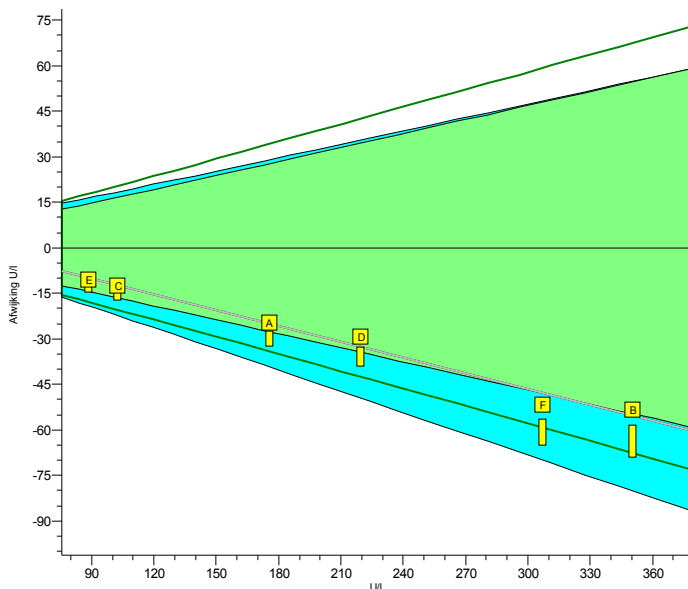
Legend

IFCC traceable IFCC non-traceable

INPUTS 2013.1

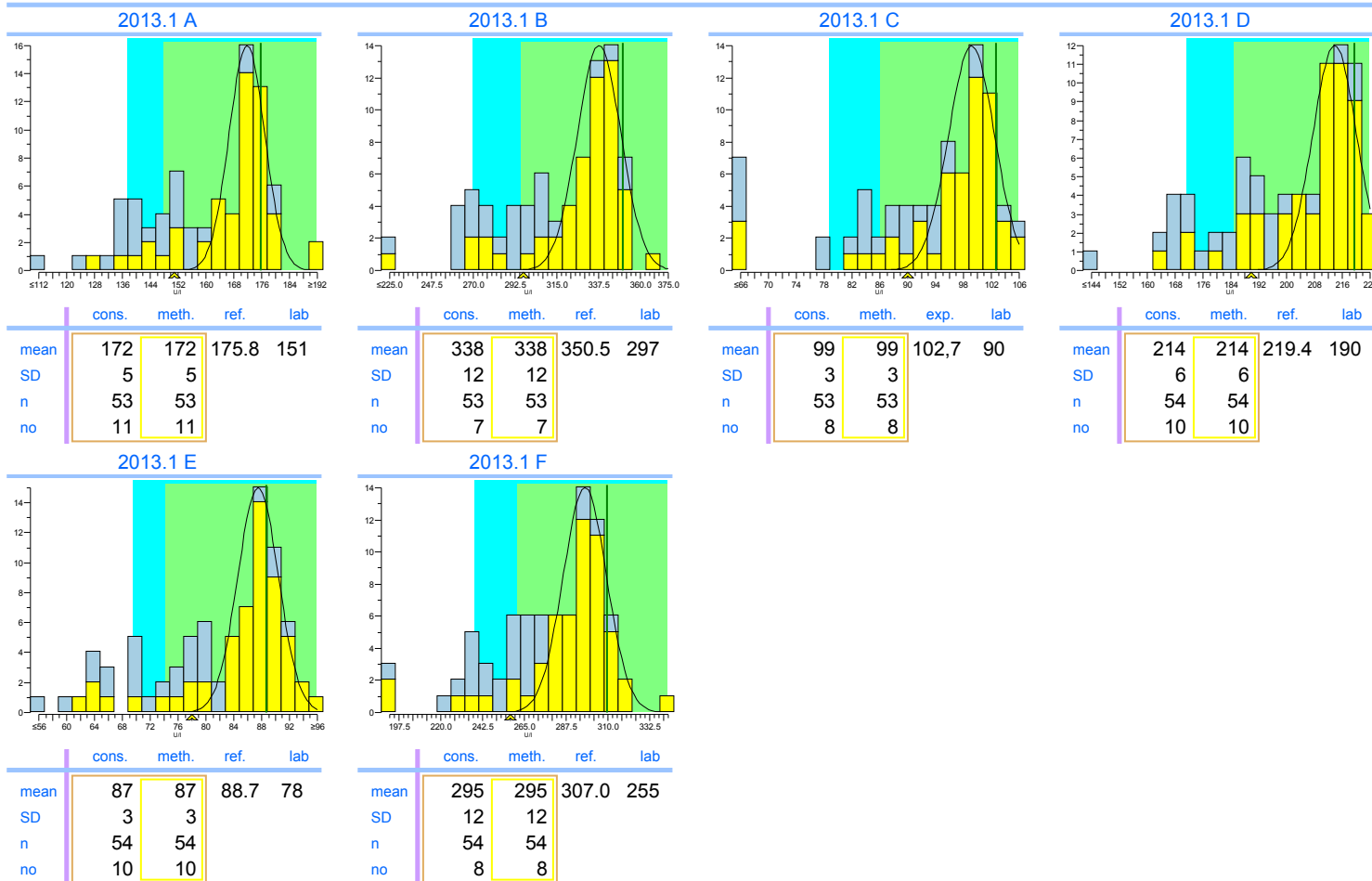
Amylase

units: U/l



	2013.1	cumulative
Trueness	-15%	-15%
Precision	1.3%	1.3%
Number	6	6
Outliers	0	0
Sigma-TE	2.0	2.0
Sigma-SA	4.6 2	4.6 2
Score pictogram		
Regression line	$5 + 0.827 \cdot x$	$5 + 0.827 \cdot x$

Consensus group IFCC traceerbaar
Method IFCC traceable



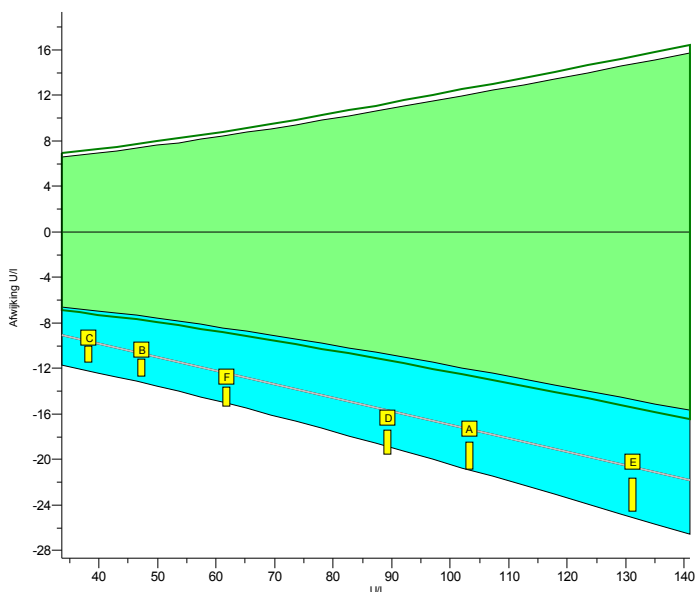
Legend

IFCC traceable IFCC non-traceable

INPUTS 2013.1

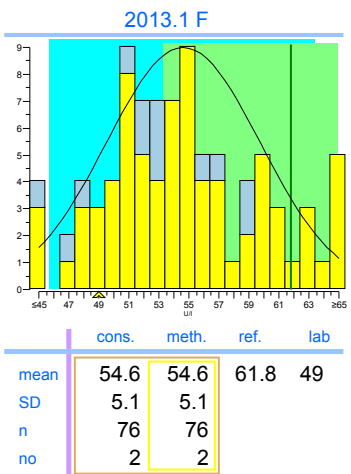
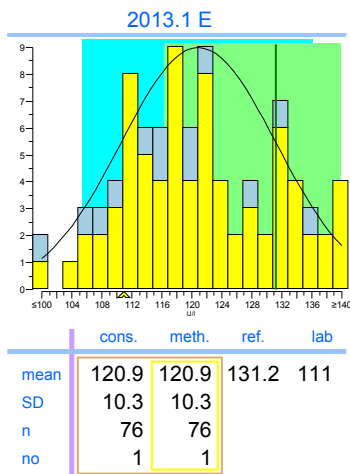
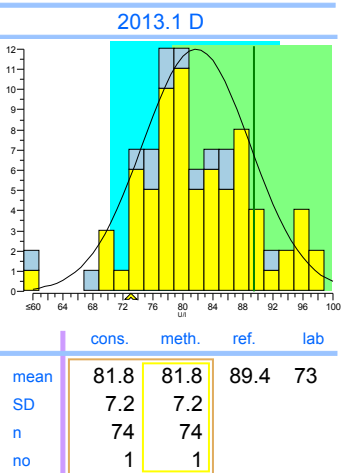
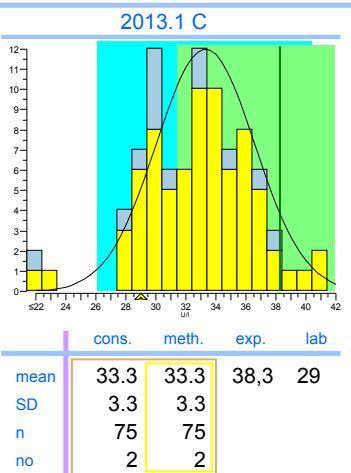
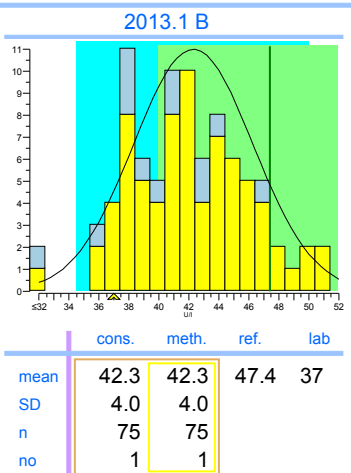
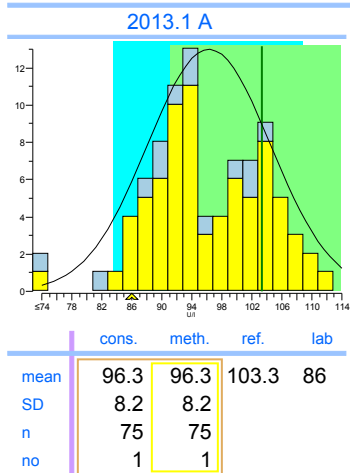
ASAT

units: U/I



	2013.1	cumulative
Trueness	-18%	-18%
Precision	1.1%	1.1%
Number	6	6
Outliers	0	0
Sigma-TE	-3.0	-3.0
Sigma-SA	-2.9 0	-2.9 0
Score pictogram		
Regression line	$-5.1 + 0.881.x$	$-5.1 + 0.881.x$

Consensus group IFCC traceerbaar
Method IFCC traceable



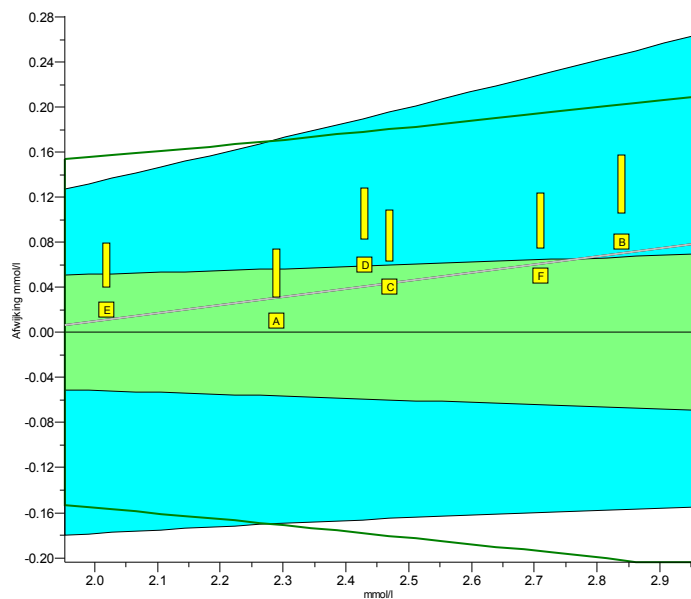
Legend

IFCC traceable IFCC non-traceable

INPUTS 2013.1

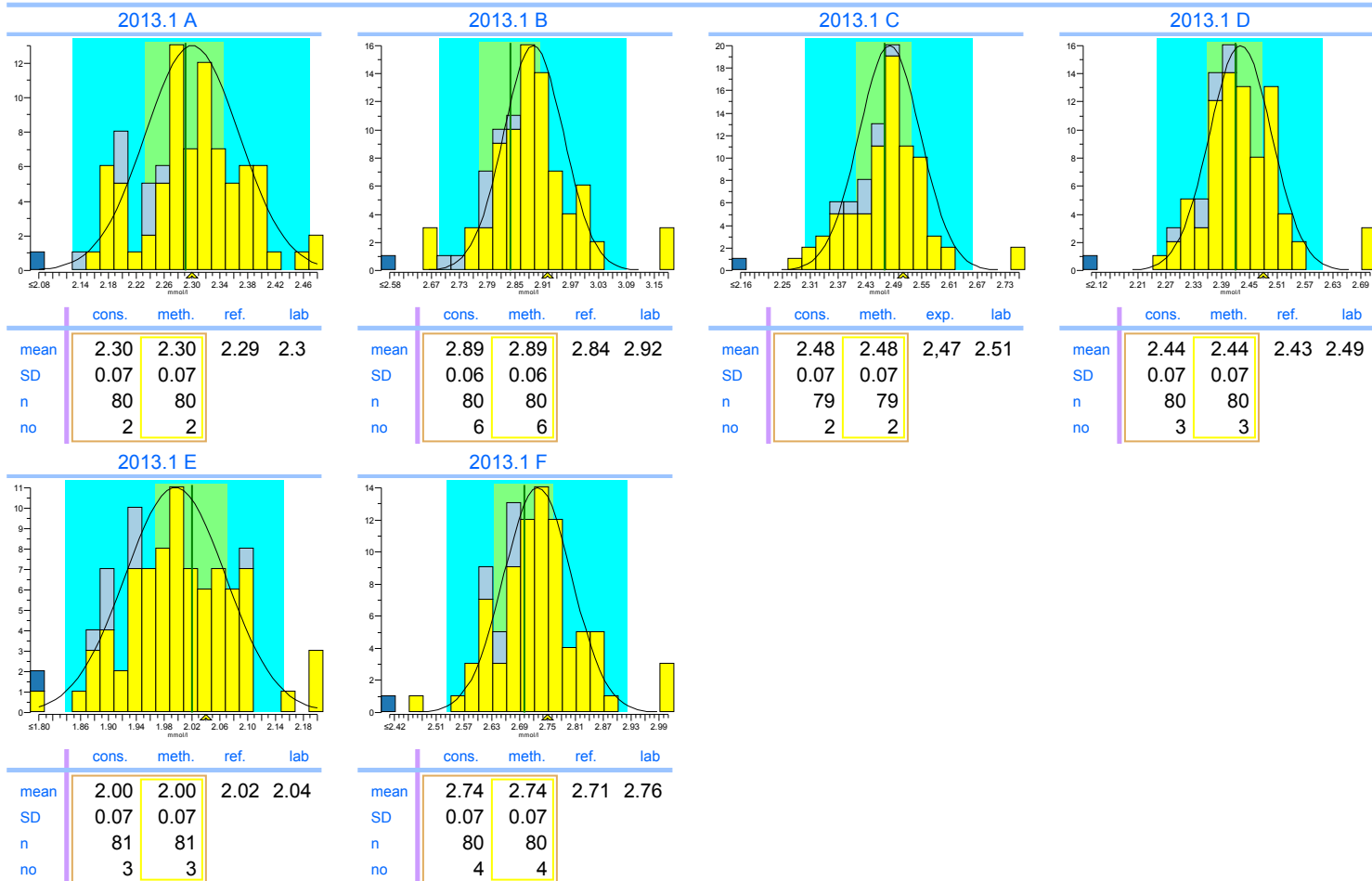
Calcium

units: mmol/l



	2013.1	cumulative
Trueness	+1.8%	+1.8%
Precision	0.75%	0.75%
Number	6	6
Outliers	0	0
Sigma-TE	1.8	1.8
Sigma-SA	6.0 2	6.0 2
Score pictogram		
Regression line	$-0.13 + 1.072 \cdot x$	$-0.13 + 1.072 \cdot x$

Consensus group	Colorimetrisch
Method	Colorimetric, automatic, discrete



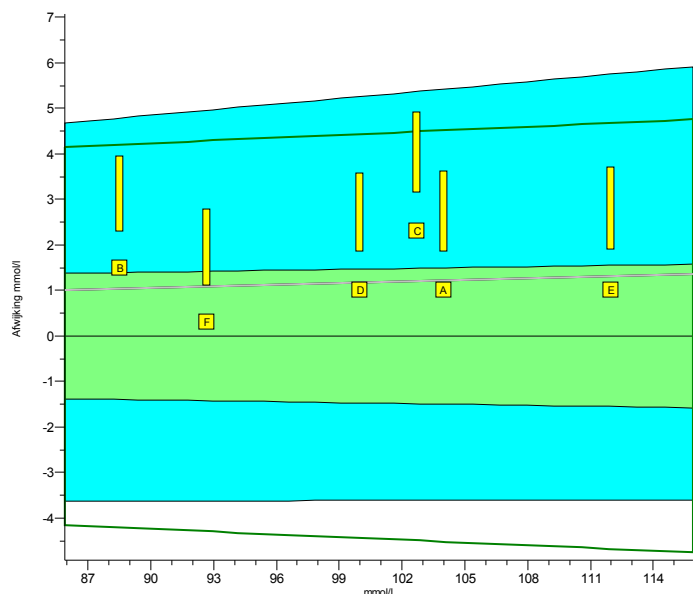
Legend

- Colorimetric, automatic, discrete
- ISE indirect (with predilution)
- Other methods

INPUTS 2013.1

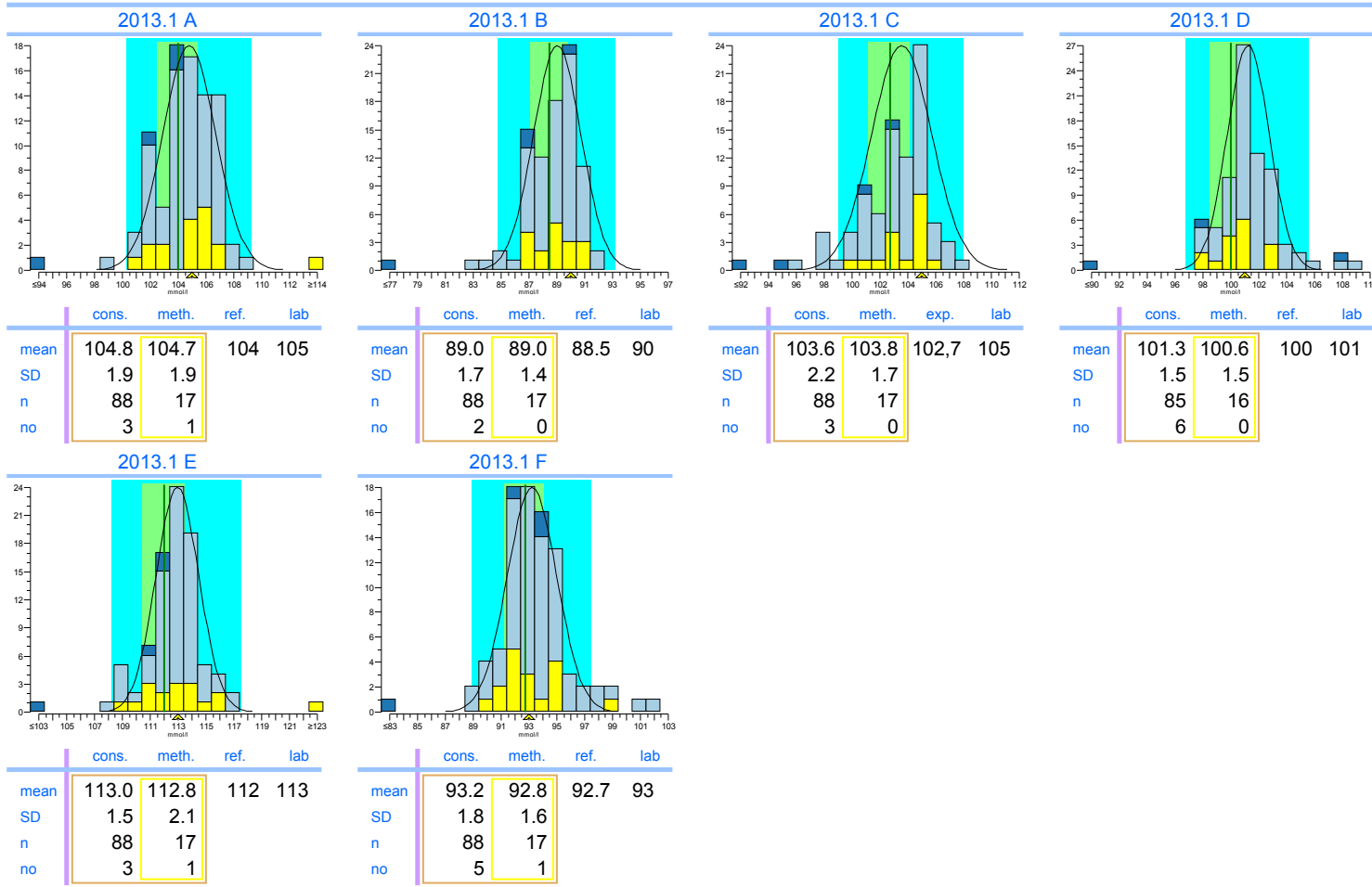
Chloride

units: mmol/l



	2013.1	cumulative
Trueness	+1.2%	+1.2%
Precision	0.69%	0.69%
Number	6	6
Outliers	0	0
Sigma-TE	1.2	1.2
Sigma-SA	5.5 2	5.5 2
Score pictogram		
Regression line	$0.0 + 1.012 \cdot x$	$0.0 + 1.012 \cdot x$

Consensus group	ISE/Colorimetrie
Method	ISE direct (no predilution)



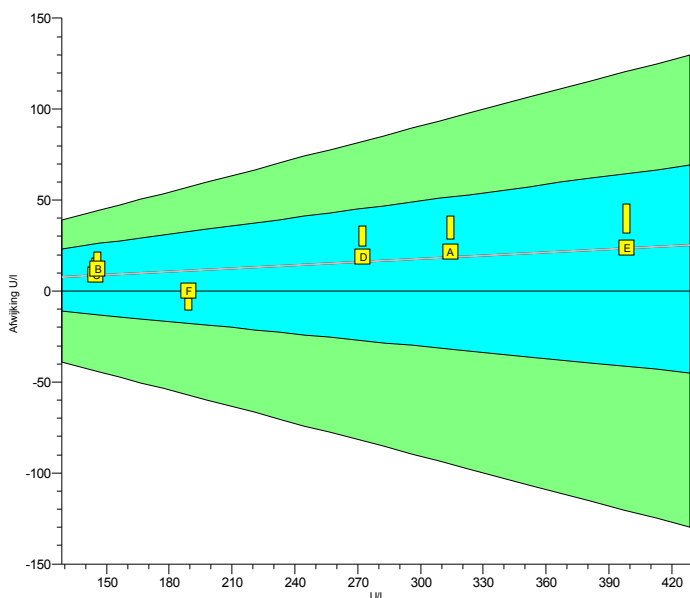
Legend



 ISE direct (no predilution)	 ISE indirect (with predilution)	 Other methods
---	--	---

INPUTS 2013.1

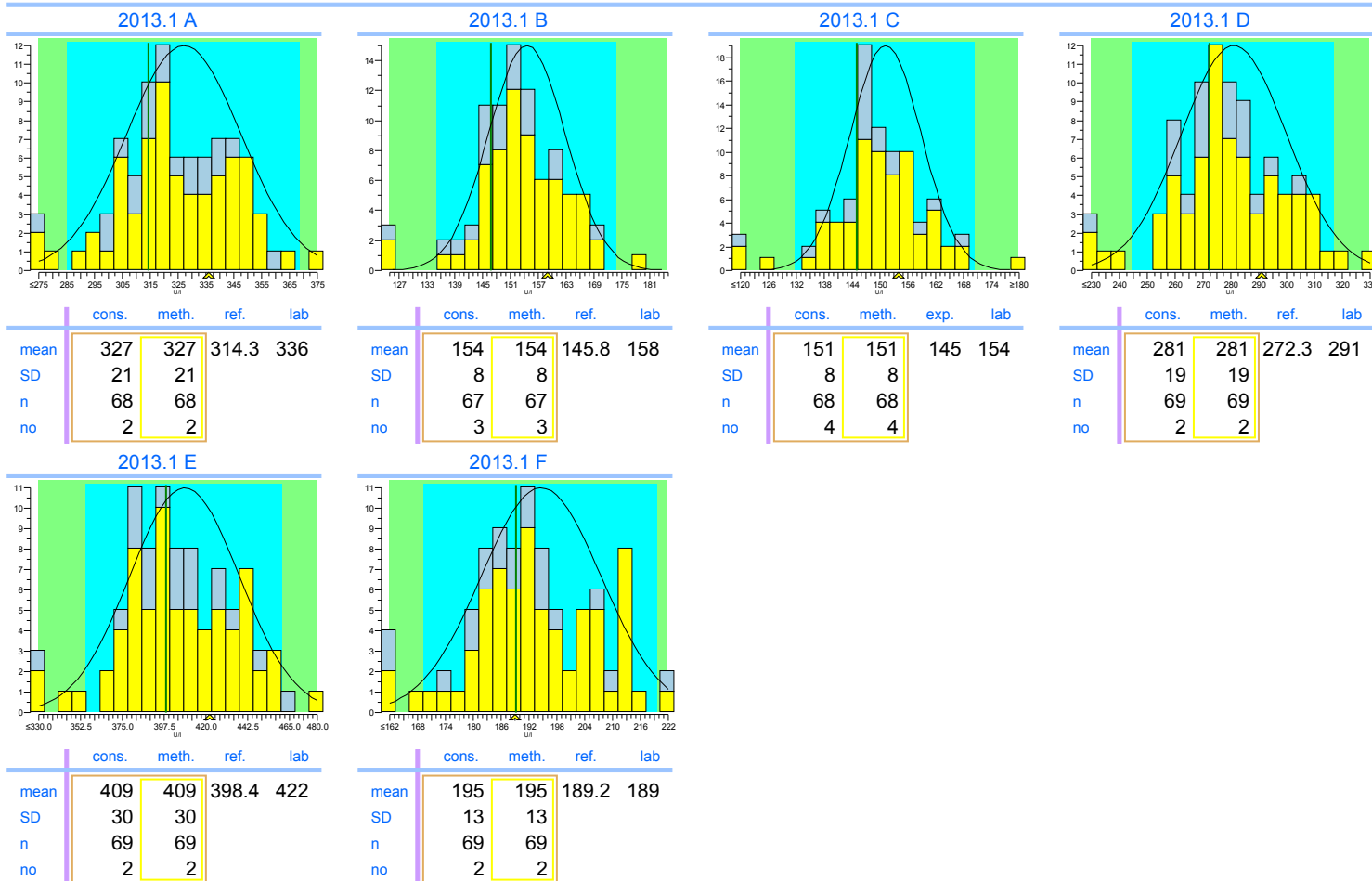
CK

units: U/I



	2013.1	cumulative
Trueness	+5.8%	+5.8%
Precision	2.0%	2.0%
Number	6	6
Outliers	0	0
Sigma-TE	6.0 2	6.0 2
Sigma-SA	5.7	5.7
Score pictogram		
Regression line	$0 + 1.059 \cdot x$	$0 + 1.059 \cdot x$

Consensus group IFCC traceerbaar
Method IFCC traceable



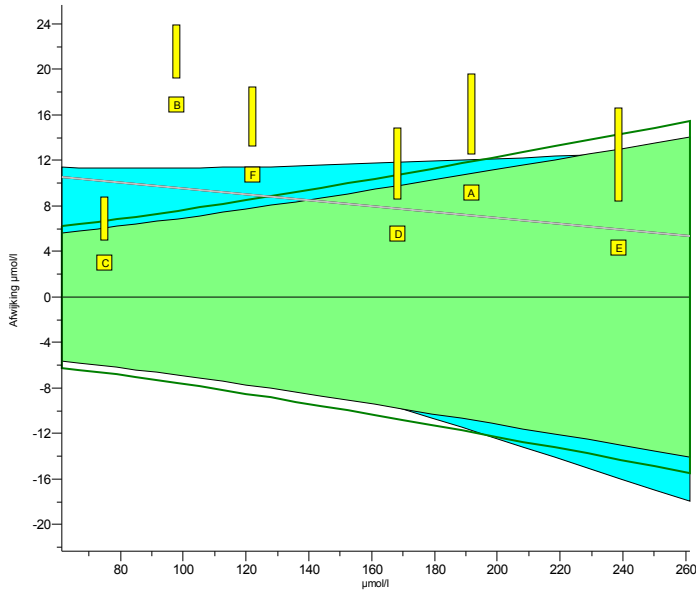
Legend

IFCC traceable IFCC non-traceable

INPUTS 2013.1

Creatinine

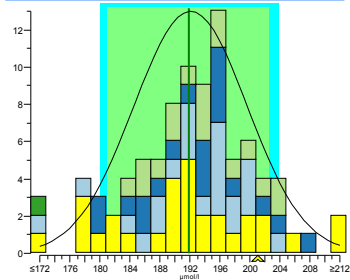
units: $\mu\text{mol/l}$



	2013.1	cumulative
Trueness	+5.5%	+5.5%
Precision	3.1%	3.1%
Number	6	6
Outliers	0	0
Sigma-TE	1.1	1.1
Sigma-SA	1.4 0	1.4 0
Score pictogram		
Regression line	$12.1 + 0.974.x$	$12.1 + 0.974.x$

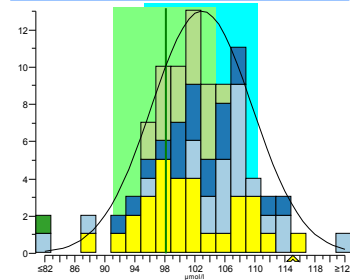
Consensus group: Jaffe
Method: Alk. Picrate, kinetic with compensation

2013.1 A



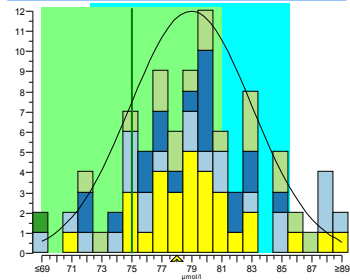
	cons.	meth.	ref.	lab
mean	192.1	190.4	191.9	201
SD	7.6	9.4		
n	71	30		
no	2	1		

2013.1 B



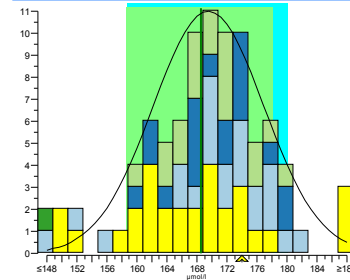
	cons.	meth.	ref.	lab
mean	102.9	101.0	98.11	115
SD	6.7	6.6		
n	71	30		
no	2	0		

2013.1 C



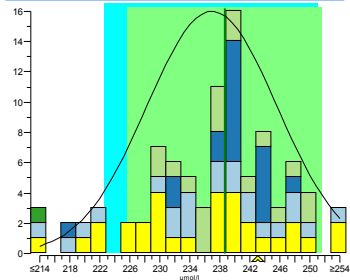
	cons.	meth.	exp.	lab
mean	78.9	79.1	75	78
SD	4.1	3.4		
n	71	30		
no	1	1		

2013.1 D



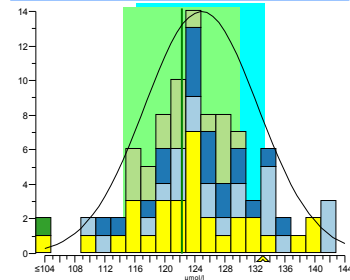
	cons.	meth.	ref.	lab
mean	169.5	167.6	168.5	174
SD	7.4	10.0		
n	70	30		
no	1	0		

2013.1 E



	cons.	meth.	ref.	lab
mean	236.9	234.2	238.7	243
SD	8.7	9.4		
n	72	31		
no	3	2		

2013.1 F



	cons.	meth.	ref.	lab
mean	124.9	123.5	122.3	133
SD	7.6	8.3		
n	72	31		
no	0	0		

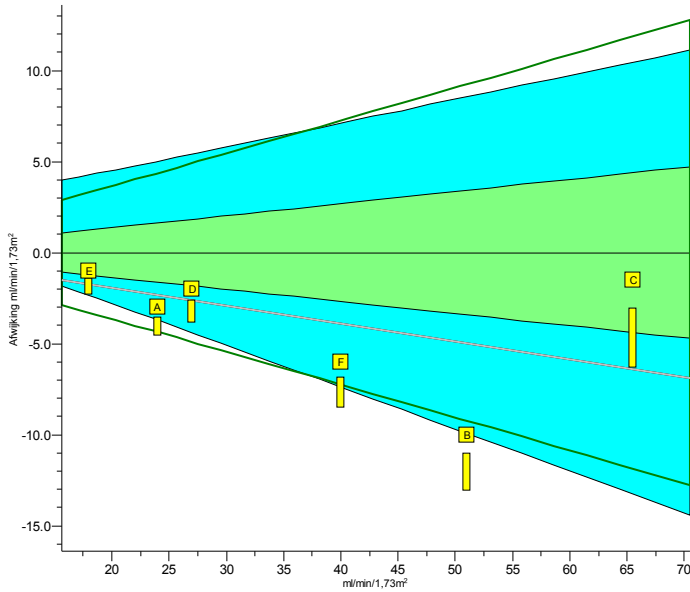
Legend



- Alk. Picrate, kinetic with compensation
- Alk. Picrate, kinetic
- Alk. Picrate, endpoint
- Enzymatic, automatic
- Other methods

INPUTS 2013.1

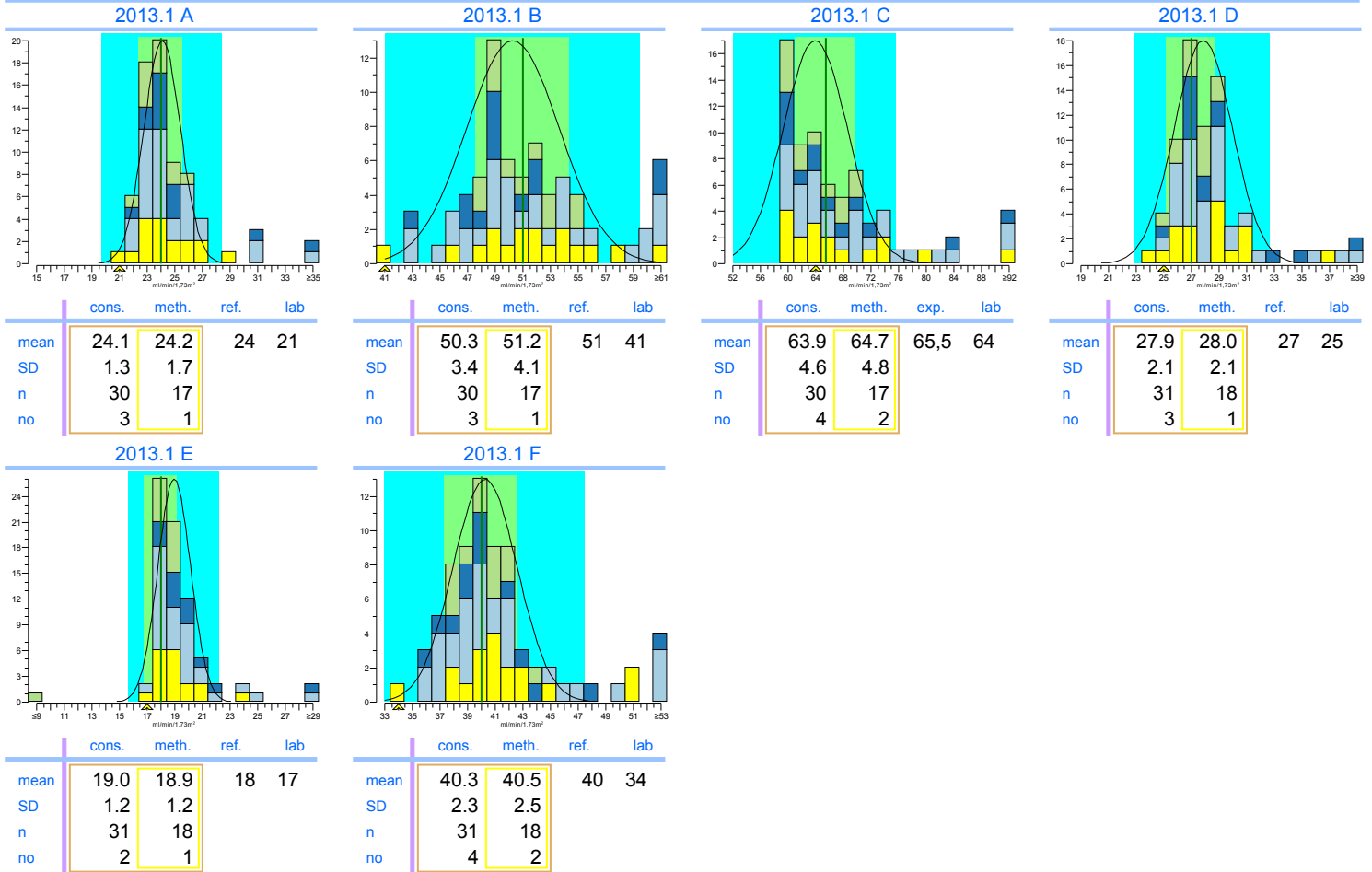
eGFR (F, 55, white)

units: ml/min/1,73m²



	2013.1	cumulative
Trueness	-10%	-10%
Precision	10%	10%
Number	6	6
Outliers	0	0
Sigma-TE	-0.5	-0.5
Sigma-SA	4.6 2	4.6 2
Score pictogram		
Regression line	$0.0 + 0.902 \cdot x$	$0.0 + 0.902 \cdot x$

Consensus group Jaffe
Method Alk. Picrate, kinetic with compensation



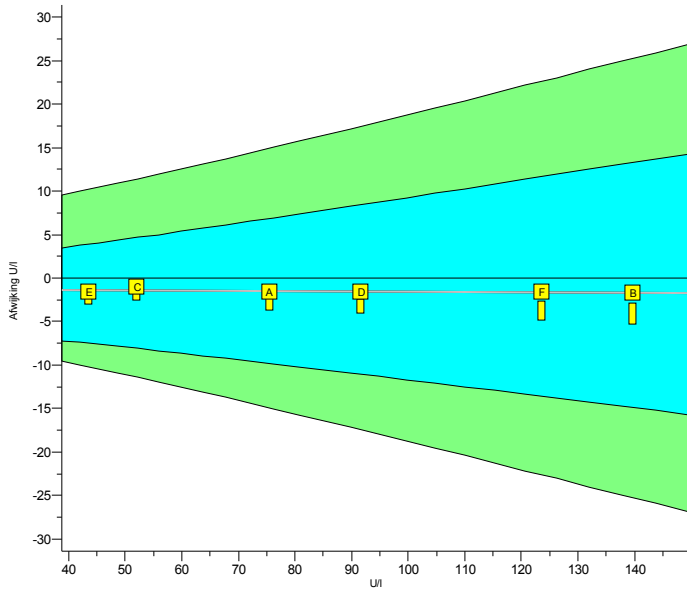
Legend

- Alk. Picrate, kinetic with compensation
- Other methods
- Alk. Picrate, kinetic
- Enzymatic, automatic

INPUTS 2013.1

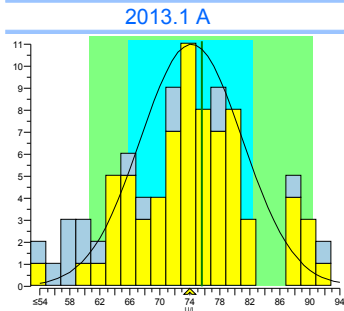
Gamma-GT

units: U/I

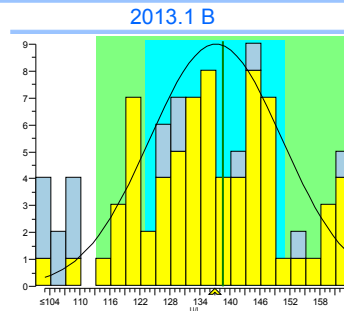


	2013.1	cumulative
Trueness	-1.7%	-1.7%
Precision	0.78%	0.78%
Number	6	6
Outliers	0	0
Sigma-TE	6.0 2	6.0 2
Sigma-SA	6.0	6.0
Score pictogram		
Regression line	$-1.2 + 0.996.x$	$-1.2 + 0.996.x$

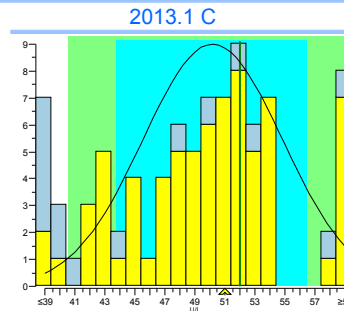
Consensus group IFCC traceerbaar
Method IFCC traceable



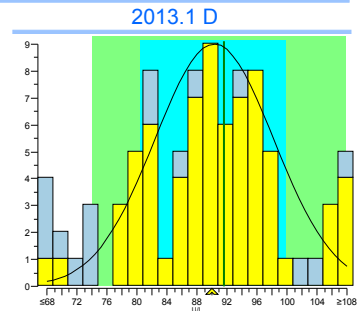
	cons.	meth.	ref.	lab
mean	74.2	74.2	75.6	74
SD	6.8	6.8		
n	72	72		
no	1	1		



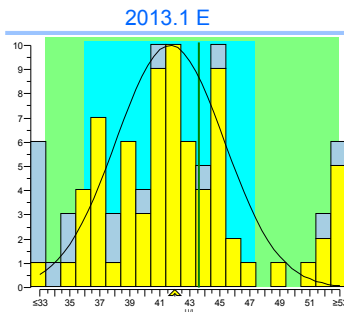
	cons.	meth.	ref.	lab
mean	138.2	138.2	139.7	138
SD	13.3	13.3		
n	72	72		
no	1	1		



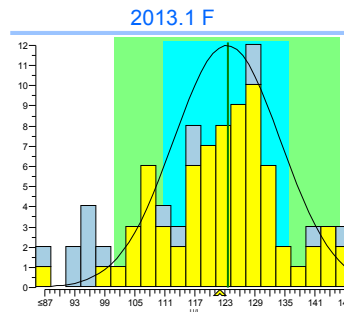
	cons.	meth.	exp.	lab
mean	50.2	50.2	52	51
SD	4.6	4.6		
n	72	72		
no	2	2		



	cons.	meth.	ref.	lab
mean	90.3	90.3	91.6	90
SD	7.9	7.9		
n	71	71		
no	1	1		



	cons.	meth.	ref.	lab
mean	41.7	41.7	43.6	42
SD	3.6	3.6		
n	73	73		
no	6	6		



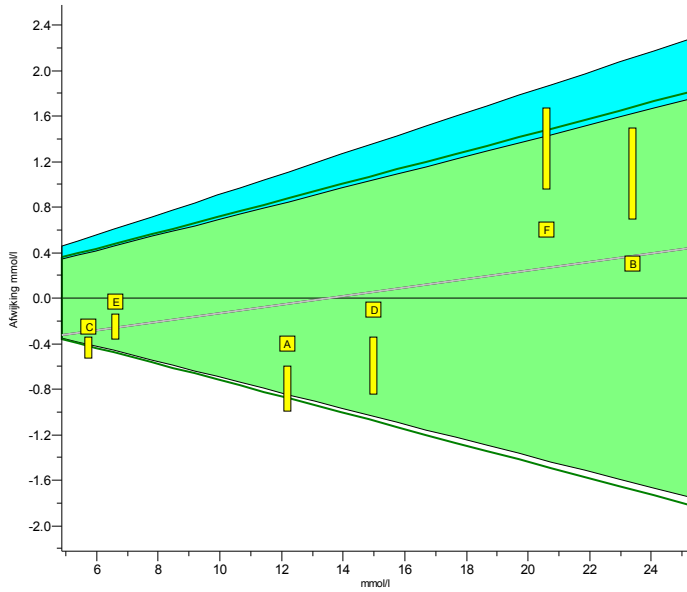
	cons.	meth.	ref.	lab
mean	123.4	123.4	123.6	122
SD	10.7	10.7		
n	73	73		
no	1	1		



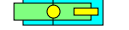

Legend
 IFCC traceable
 IFCC non-traceable

INPUTS 2013.1

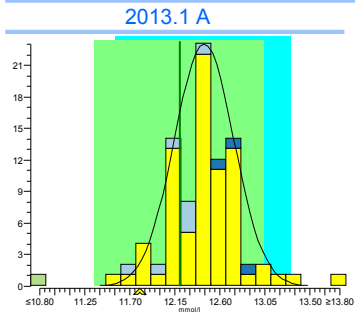
Glucose

units: mmol/l

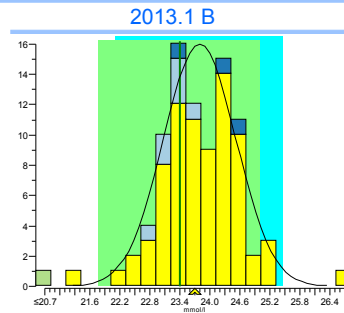


	2013.1	cumulative
Trueness	+0.14%	+0.14%
Precision	1.8%	1.8%
Number	6	6
Outliers	0	0
Sigma-TE	4.3	4.3
Sigma-SA	4.5 	4.5 
Score pictogram		
Regression line	$-0.50 + 1.037.x$	$-0.50 + 1.037.x$

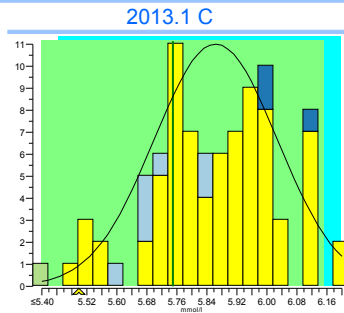
Consensus group: Natte chemie
Method: Hexokinase, automatic



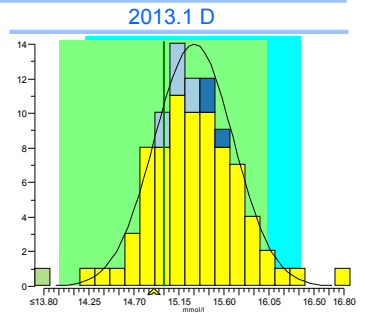
	cons.	meth.	ref.	lab
mean	12.44	12.44	12.2	11.8
SD	0.30	0.31		
n	88	77		
no	3	2		



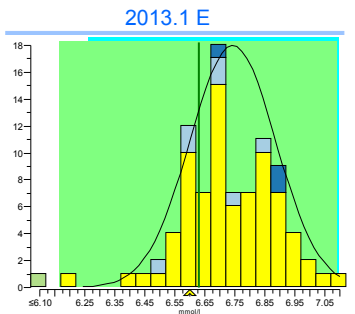
	cons.	meth.	ref.	lab
mean	23.8	23.8	23.4	23.7
SD	0.7	0.7		
n	88	77		
no	3	2		



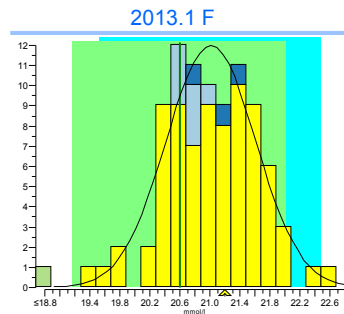
	cons.	meth.	exp.	lab
mean	5.86	5.87	5.75	5.5
SD	0.16	0.16		
n	88	77		
no	1	0		



	cons.	meth.	ref.	lab
mean	15.30	15.31	15.0	14.9
SD	0.39	0.41		
n	88	77		
no	2	1		



	cons.	meth.	ref.	lab
mean	6.74	6.75	6.63	6.6
SD	0.14	0.14		
n	89	78		
no	2	1		



	cons.	meth.	ref.	lab
mean	21.01	21.03	20.6	21.2
SD	0.60	0.63		
n	89	78		
no	1	0		

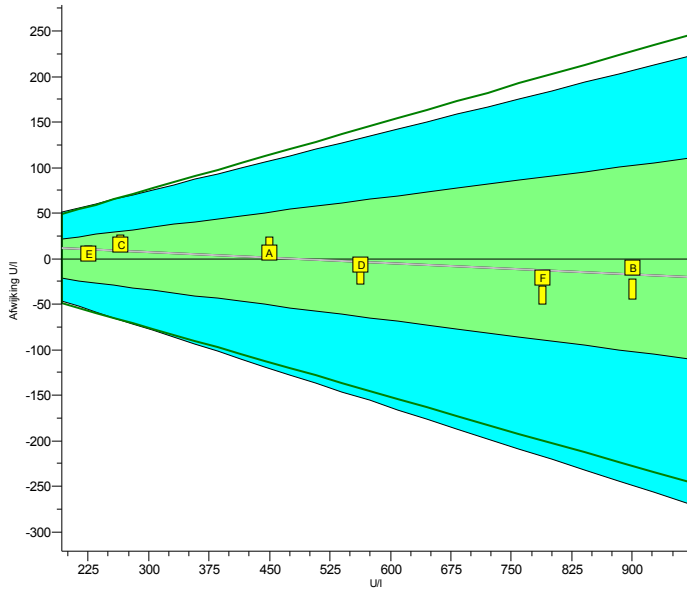
Legend



- Hexokinase, automatic
- Glucose-oxidase, amperometric, H2O2
- Glucose-oxidase/POD, automatic
- Other methods

INPUTS 2013.1

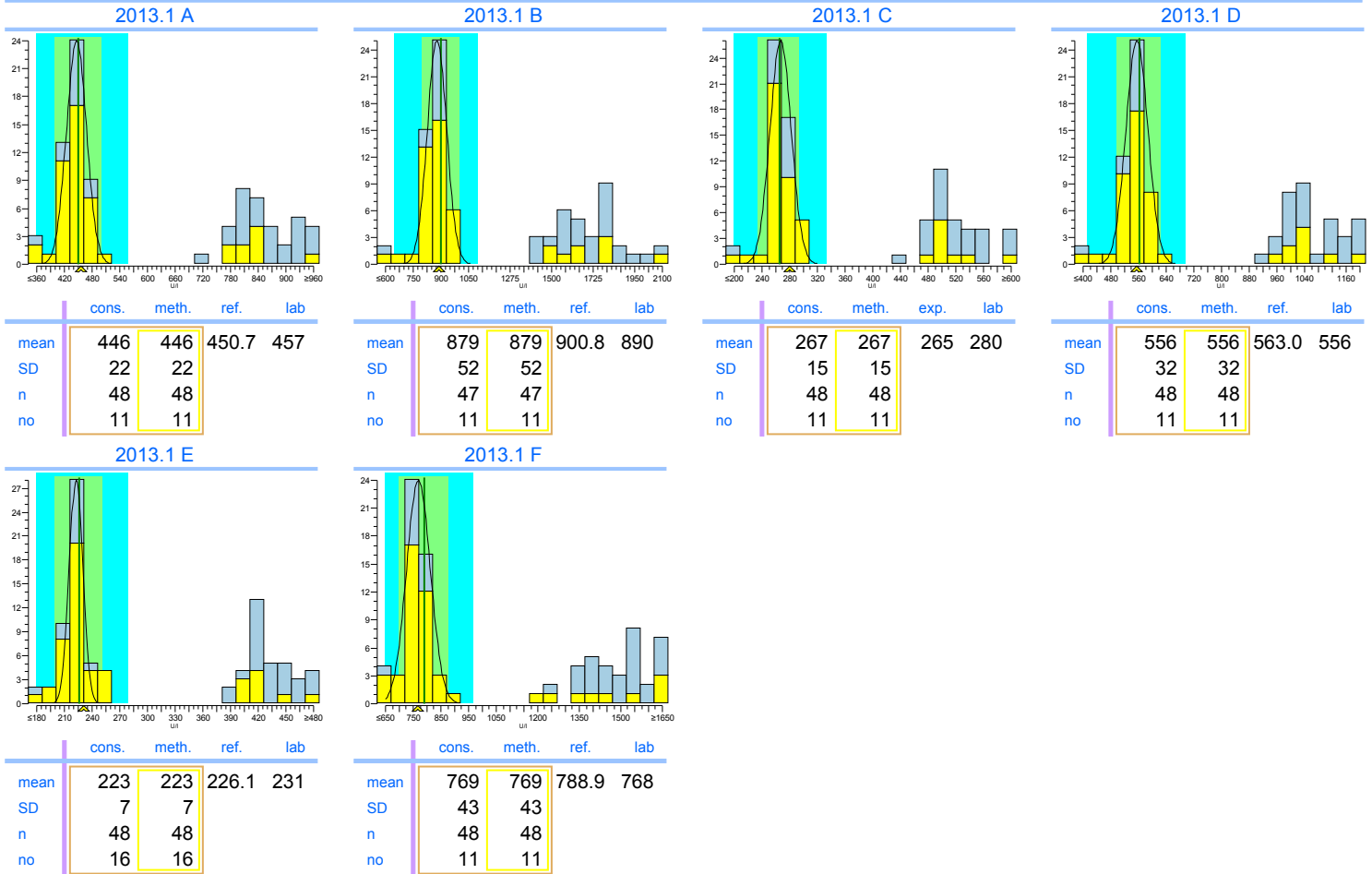
LD

units: U/I



	2013.1	cumulative
Trueness	-0.39%	-0.39%
Precision	1.1%	1.1%
Number	6	6
Outliers	0	0
Sigma-TE	6.0	6.0
Sigma-SA	6.0 2	6.0 2
Score pictogram		
Regression line	$20 + 0.958 \cdot x$	$20 + 0.958 \cdot x$

Consensus group IFCC traceerbaar
Method IFCC traceable



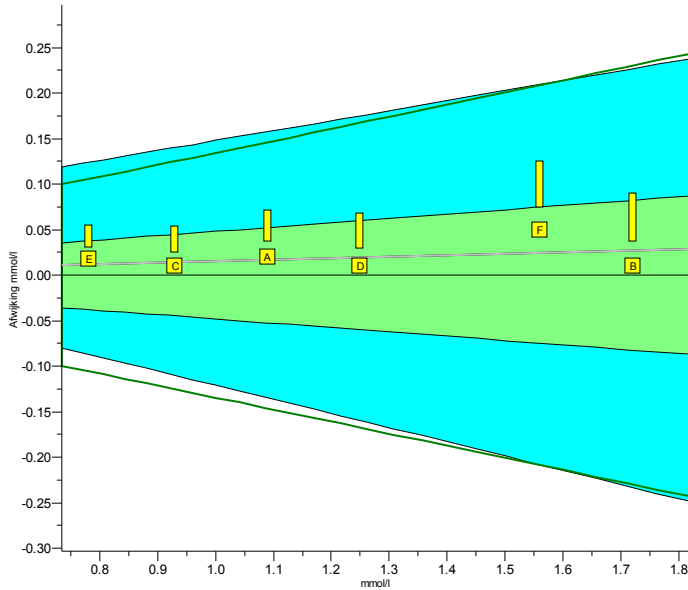
Legend

IFCC traceable IFCC non-traceable

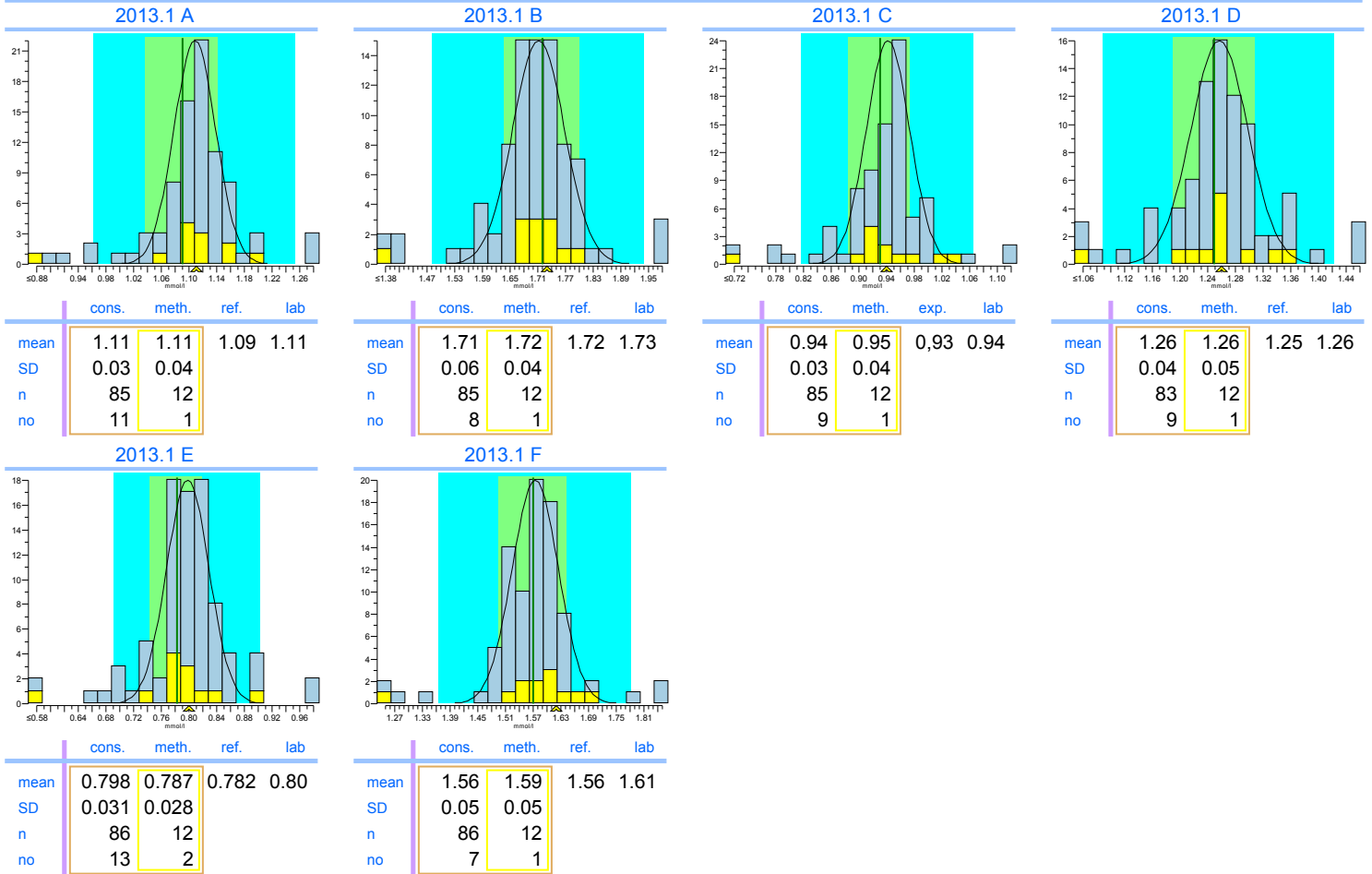
INPUTS 2013.1

Magnesium

units: mmol/l



	2013.1	cumulative
Trueness	+1.6%	+1.6%
Precision	1.3%	1.3%
Number	6	6
Outliers	0	0
Sigma-TE	3.3	3.3
Sigma-SA	6.0 2	6.0 2
Score pictogram		
Regression line	<u>0.00 + 1.016.x</u>	<u>0.00 + 1.016.x</u>
Consensus group	Overall	
Method	Other methods	



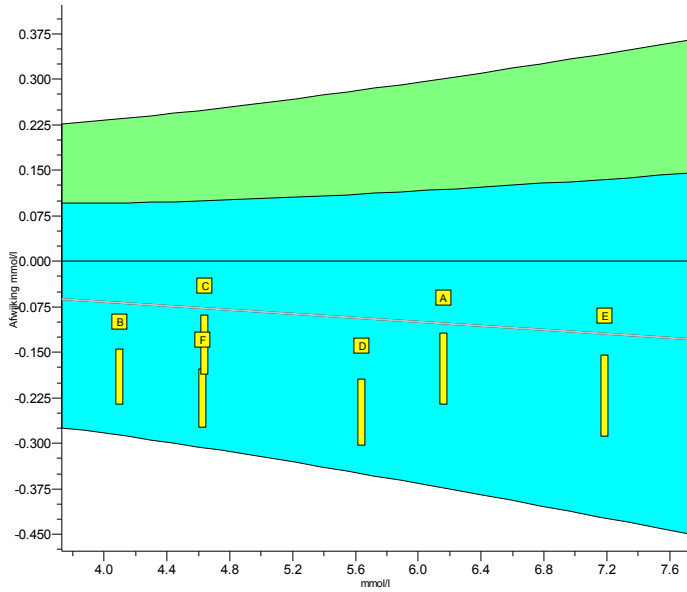
Legend



INPUTS 2013.1

Potassium

units: mmol/l



	2013.1	cumulative
Trueness	-1.7%	-1.7%
Precision	0.82%	0.82%
Number	6	6
Outliers	0	0
Sigma-TE	4.9 2	4.9 2
Sigma-SA	3.8	3.8
Score pictogram		
Regression line	<u>0.00 + 0.983.x</u>	<u>0.00 + 0.983.x</u>

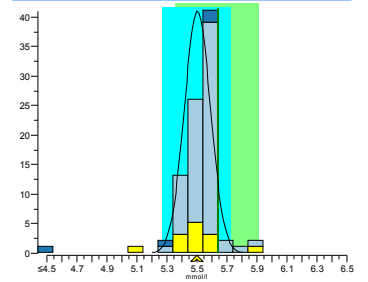
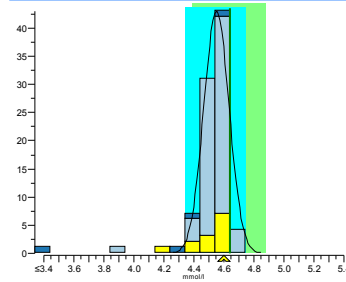
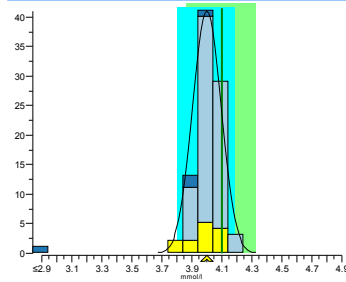
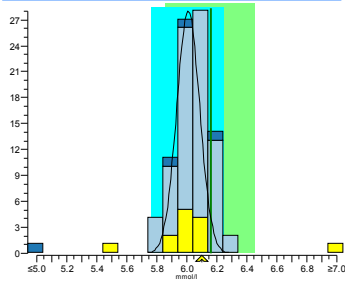
Consensus group ISE onverdund
Method ISE direct (no predilution)

2013.1 A

2013.1 B

2013.1 C

2013.1 D



	cons.	meth.	ref.	lab
mean	6.01	6.01	6.16	6.1
SD	0.08	0.08		
n	13	13		
no	2	2		

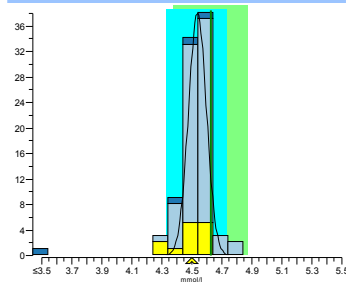
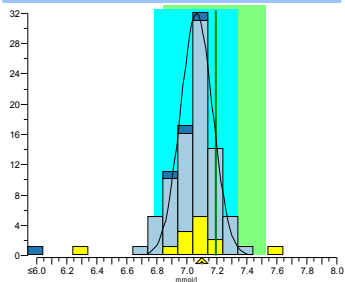
	cons.	meth.	ref.	lab
mean	4.00	4.00	4.10	4.0
SD	0.09	0.09		
n	13	13		
no	0	0		

	cons.	meth.	exp.	lab
mean	4.55	4.55	4.64	4.6
SD	0.08	0.08		
n	13	13		
no	1	1		

	cons.	meth.	ref.	lab
mean	5.50	5.50	5.64	5.5
SD	0.09	0.09		
n	13	13		
no	2	2		

2013.1 E

2013.1 F



	cons.	meth.	ref.	lab
mean	7.07	7.07	7.19	7.1
SD	0.11	0.11		
n	13	13		
no	2	2		

	cons.	meth.	ref.	lab
mean	4.54	4.54	4.63	4.5
SD	0.06	0.06		
n	13	13		
no	2	2		

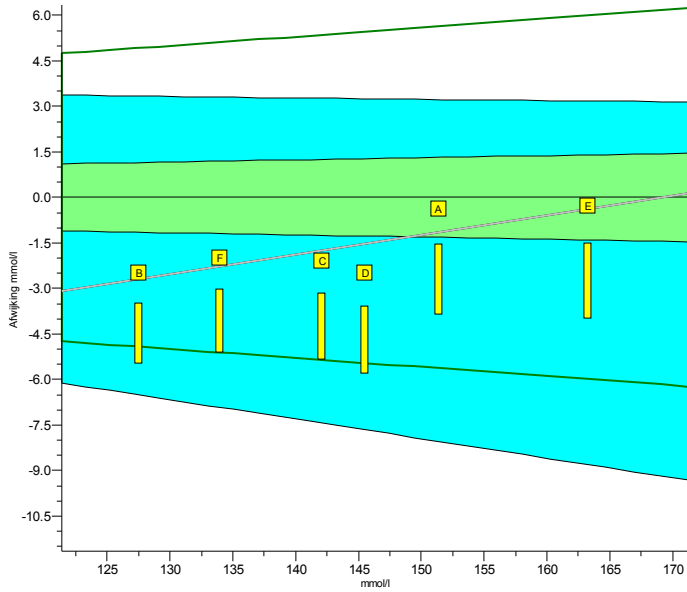
Legend

- ISE direct (no predilution)
- ISE indirect (with predilution)
- Other methods

INPUTS 2013.1

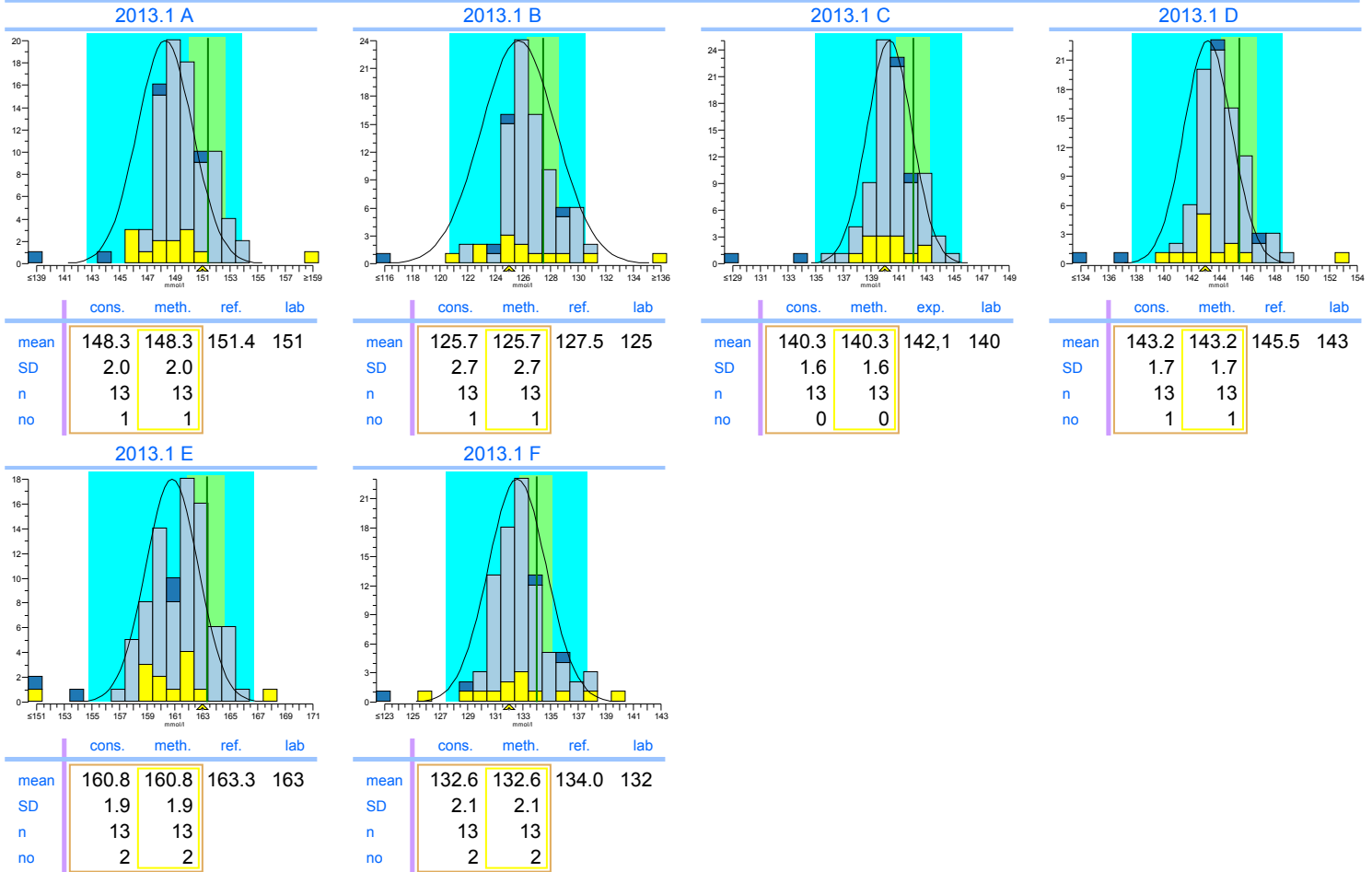
Sodium

units: mmol/l



	2013.1	cumulative
Trueness	-1.1%	-1.1%
Precision	0.63%	0.63%
Number	6	6
Outliers	0	0
Sigma-TE	0.3	0.3
Sigma-SA	4.9 2	4.9 2
Score pictogram		
Regression line	$-11.0 + 1.065.x$	$-11.0 + 1.065.x$

Consensus group ISE onverdund
Method ISE direct (no predilution)



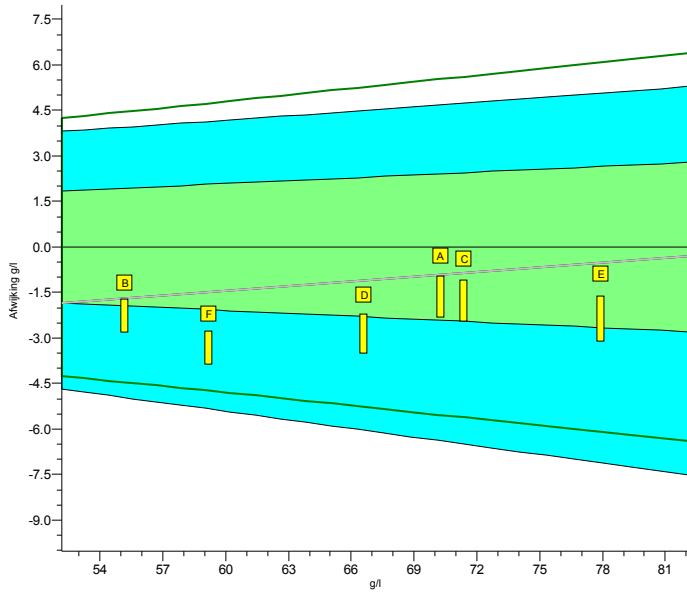
Legend

- ISE direct (no predilution)
- ISE indirect (with predilution)
- Other methods

INPUTS 2013.1

Total Protein

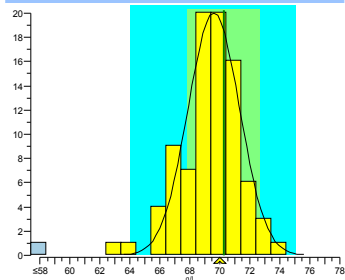
units: g/l



	2013.1	cumulative
Trueness	-1.6%	-1.6%
Precision	0.79%	0.79%
Number	6	6
Outliers	0	0
Sigma-TE	3.0	3.0
Sigma-SA	6.0 2	6.0 2
Score pictogram		
Regression line	$-4.5 + 1.051.x$	$-4.5 + 1.051.x$

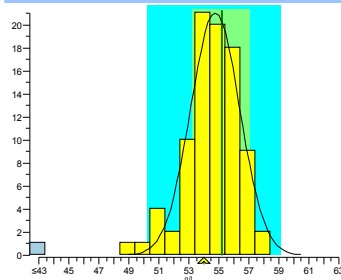
Consensus group Biureet
Method Biurete, automatic

2013.1 A



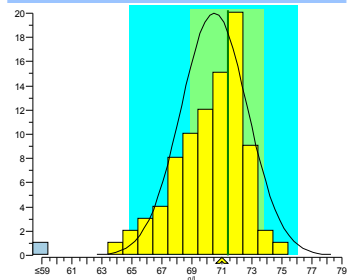
	cons.	meth.	ref.	lab
mean	69.6	69.6	70.3	70
SD	1.7	1.7		
n	88	88		
no	2	2		

2013.1 B



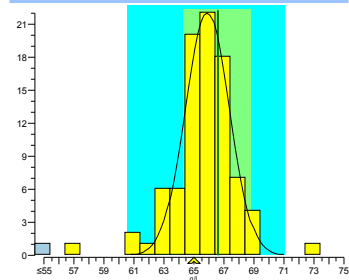
	cons.	meth.	ref.	lab
mean	54.8	54.8	55.2	54
SD	1.6	1.6		
n	88	88		
no	1	1		

2013.1 C



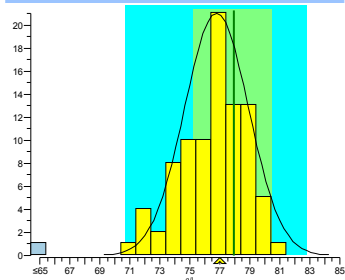
	cons.	meth.	exp.	lab
mean	70.5	70.5	71.4	71
SD	2.2	2.2		
n	87	87		
no	0	0		

2013.1 D



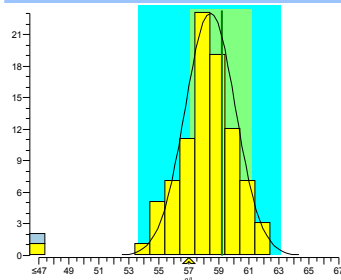
	cons.	meth.	ref.	lab
mean	65.9	65.9	66.6	65
SD	1.5	1.5		
n	88	88		
no	4	4		

2013.1 E



	cons.	meth.	ref.	lab
mean	76.8	76.8	77.9	77
SD	2.1	2.1		
n	88	88		
no	0	0		

2013.1 F



	cons.	meth.	ref.	lab
mean	58.4	58.4	59.2	57
SD	1.7	1.7		
n	89	89		
no	1	1		

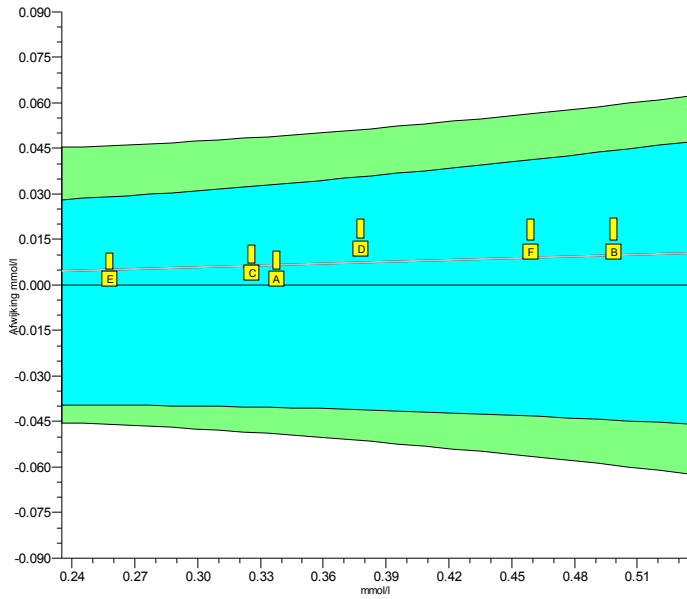
Legend



Biurete, automatic Other methods

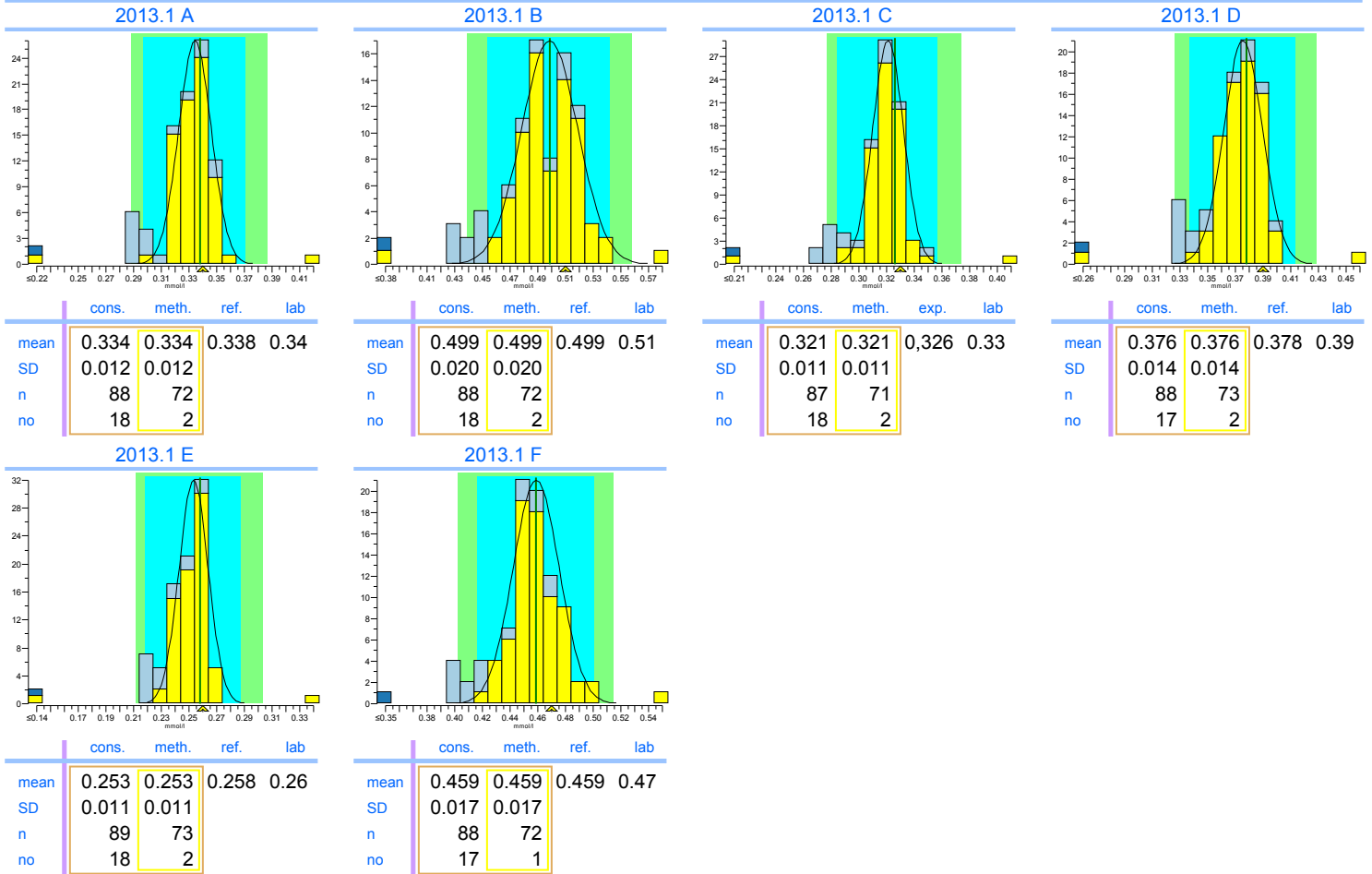
INPUTS 2013.1

Urate

units: mmol/l



	2013.1	cumulative
Trueness	+1.9%	+1.9%
Precision	0.69%	0.69%
Number	6	6
Outliers	0	0
Sigma-TE	6.0 2	6.0 2
Sigma-SA	6.0	6.0
Score pictogram		
Regression line	<u>0.000 + 1.020.x</u>	<u>0.000 + 1.020.x</u>
Consensus group	Colorimetrisch	
Method	Uricase, colorim., automatic	



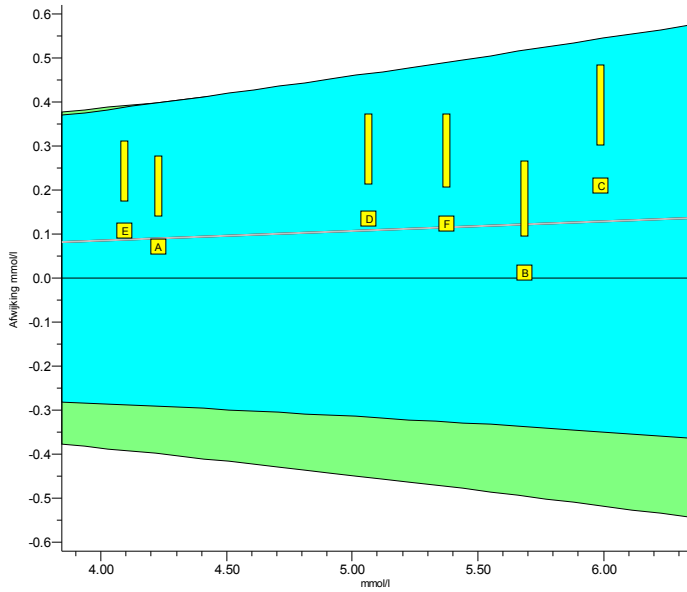
Legend



- Uricase, colorim., automatic
- Uricase, differential UV, automatic
- Overige methoden

INPUTS 2013.1

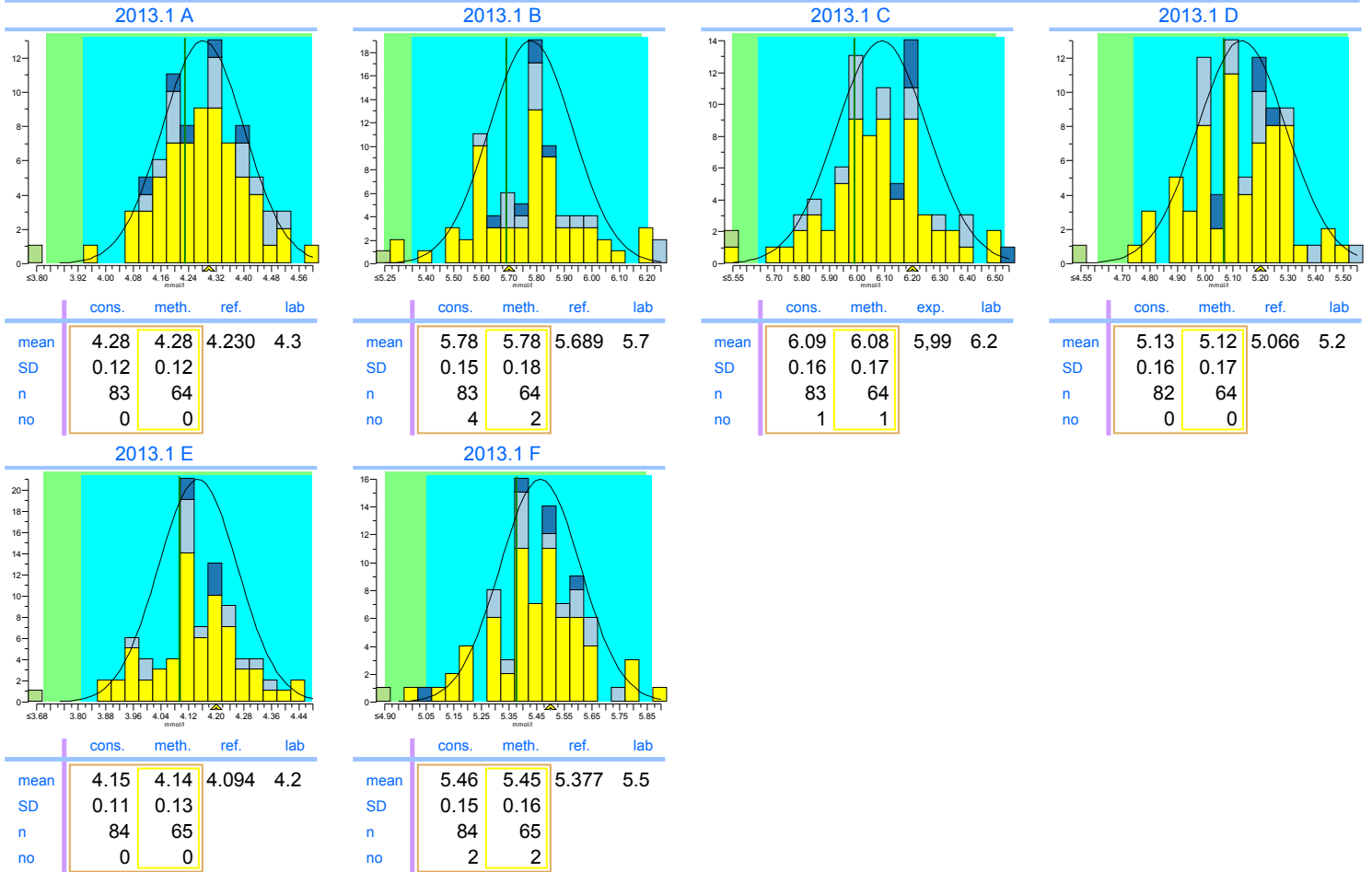
Cholesterol

units: mmol/l



	2013.1	cumulative
Trueness	+2.1%	+2.1%
Precision	1.2%	1.2%
Number	6	6
Outliers	0	0
Sigma-TE	6.0 2	6.0 2
Sigma-SA	5.3	5.3
Score pictogram		
Regression line	<u>0.00 + 1.022.x</u>	<u>0.00 + 1.022.x</u>

Consensus group	Enzymatisch
Method	Enzymatic, automatic, discrete



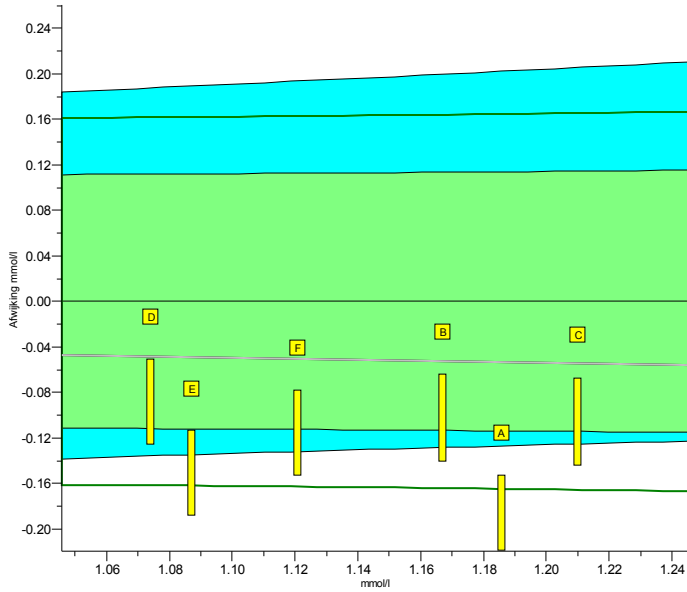
Legend



- Enzymatic, automatic, discrete
- Enzymatic, automatic, kinetic
- Abell-Kendall reference values
- Overige methoden

INPUTS 2013.1

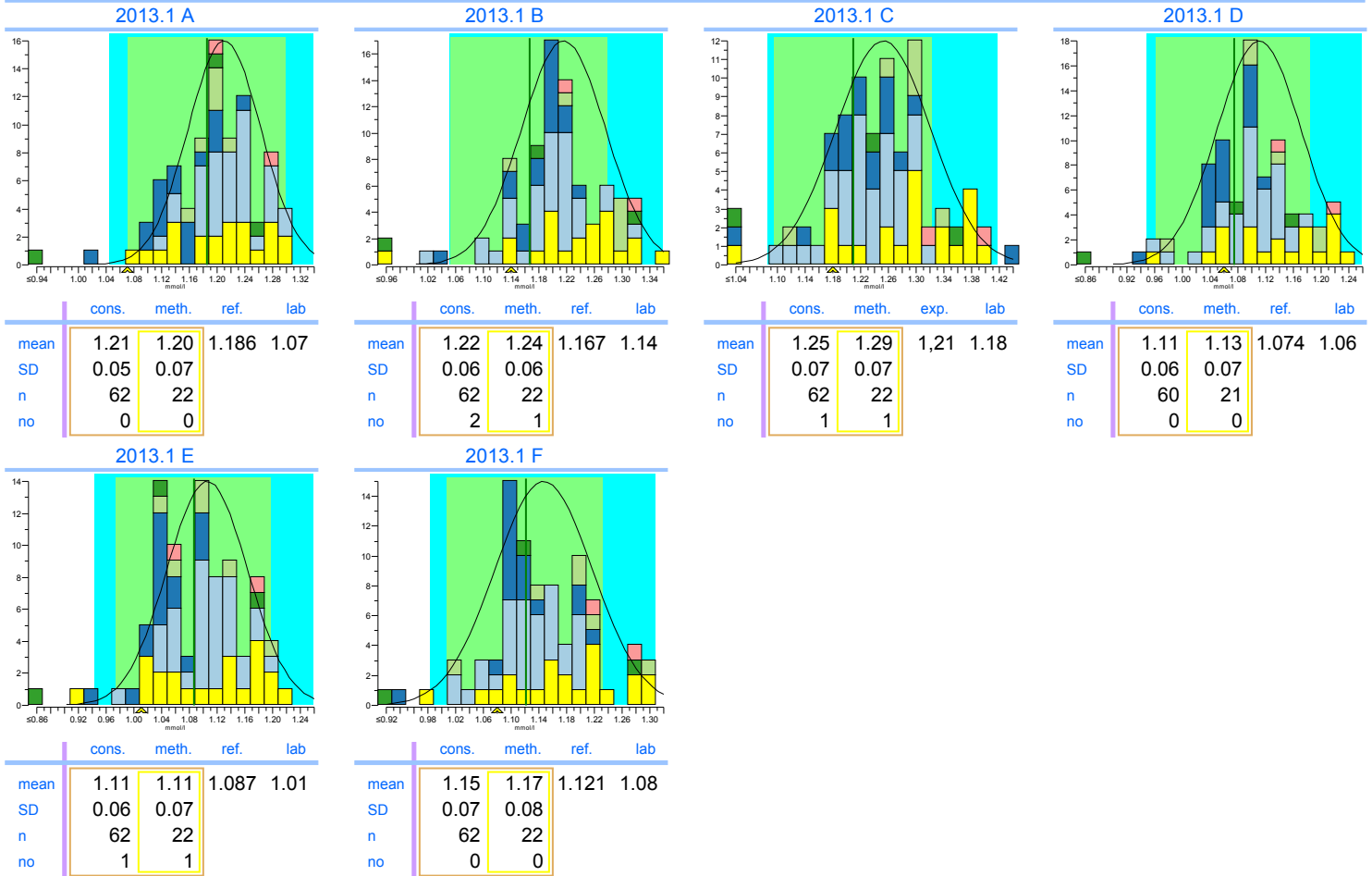
HDL-Cholesterol

units: mmol/l



	2013.1	cumulative
Trueness	-4.5%	-4.5%
Precision	2.6%	2.6%
Number	6	6
Outliers	0	0
Sigma-TE	2.8	2.8
Sigma-SA	4.5 1	4.5 1
Score pictogram		
Regression line	$0.00 + 0.955 \cdot x$	$0.00 + 0.955 \cdot x$

Consensus group	Direct
Method	Accelerator Selective Detergent ("Ultra HDL")



Legend

- Accelerator Selective Detergent ("Ultra HDL")
- PEG modified enzyme, PEGME (Kyowa Medex)
- Immunoinhibition
- Catalase method (Denka Seiken)
- Overige methoden
- Precipitation Technique