



MUSE

3708 dr. B. Croal
 Aberdeen Royal Infirmary
 Aberdeen

Groot Brittannië

INPUTS 2013.1

Survey	INPUTS 2013.1
Start date	January, 1 2013
Supervisor	dr. C. Weykamp MCA Laboratory Streekziekenhuis Koningin Beatrix Winterswijk
Subscriptions	93
Result sets	91

Scores	Your score	MAP	reported
Quantitative	27	38	



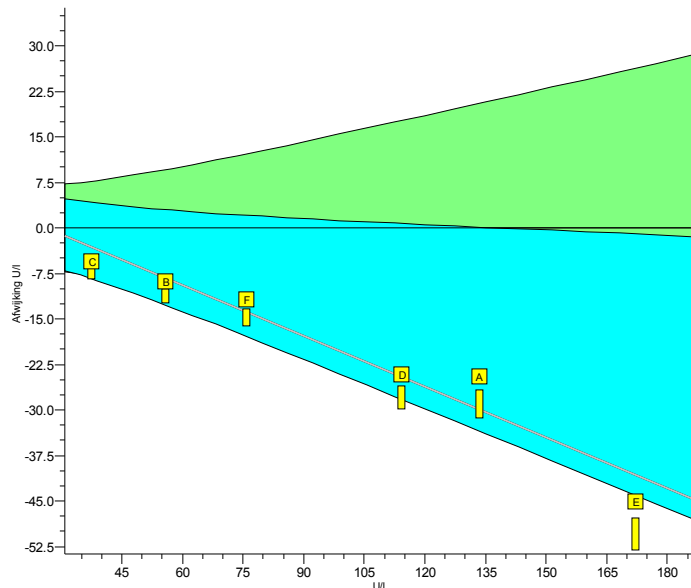
INPUTS 2013.1

Analyte		Trueness				Precision		Performance			
		your mean	ref.	cons.	SDtI	your prec.	SDbl	this survey	PS	cumulative PSc	
ALAT	U/l	78.2	98.2	86.9	10.1	2.0	2.7		0		0
Alk. Phosphatase	U/l	174	188	173	15	2	2		2		2
Amylase	U/l	191	207	201	8	2	2		2		2
ASAT	U/l	68.2	78.6	71.5	6.8	2.8	1.6		0		0
Calcium	mmol/l	2.49	2.46	2.47	0.07	0.03	0.02		2		2
Chloride	mmol/l	104.2	101.4	102.3	1.8	0.8	0.9		1		1
CK	U/l	247	244	253	18	3	3		2		2
Creatinine	µmol/l	145.5	149.1	150.7	5.6	2.6	2.1		1		1
eGFR (F, 55, white)	ml/min/1,73m ²	33.4	32.0	32.2	2.6	0.3	0.6		2		2
Gamma-GT	U/l	90.8	87.7	86.3	8.6	2.0	1.2		2		2
Glucose	mmol/l	14.13	13.93	14.19	0.44	0.25	0.18		1		1
LD	U/l	498	532	523	33	15	9		2		2
Magnesium	mmol/l	1.29	1.22	1.23	0.04	0.04	0.02		1		1
Potassium	mmol/l	5.50	5.39	5.30	0.10	0.08	0.04		1		1
Sodium	mmol/l	145.3	144.0	142.7	1.7	1.5	0.9		1		1
Total Protein	g/l	68.0	66.8	66.0	1.8	0.7	0.7		2		2
Urate	µmol/l	389	376	374	15	6	4		2		2
Cholesterol	mmol/l	5.02	5.07	5.15	0.14	0.05	0.05		2		2
HDL-Cholesterol	mmol/l	1.22	1.14	1.17	0.06	0.04	0.03		1		1
Total :									27		27

INPUTS 2013.1

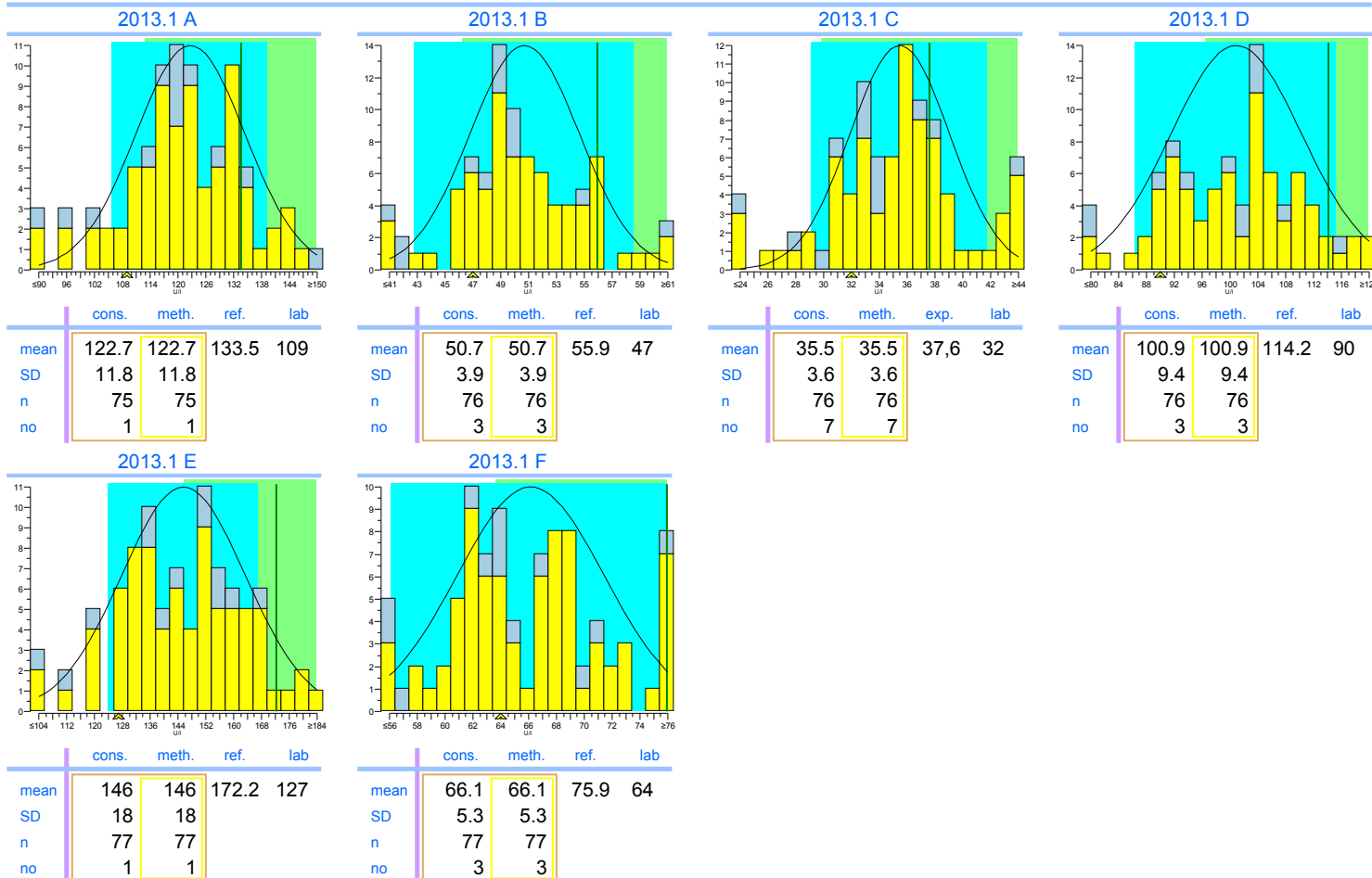
ALAT

units: U/I



	2013.1	cumulative
Trueness	-20%	-20%
Precision	2.3%	2.3%
Number	6	6
Outliers	0	0
Sigma-TE	-0.1 0	-0.1 0
Sigma-SA	-1.3	-1.3
Score pictogram		
Regression line	$7.4 + 0.721 \cdot x$	$7.4 + 0.721 \cdot x$

Consensus group IFCC traceerbaar
Method IFCC traceable



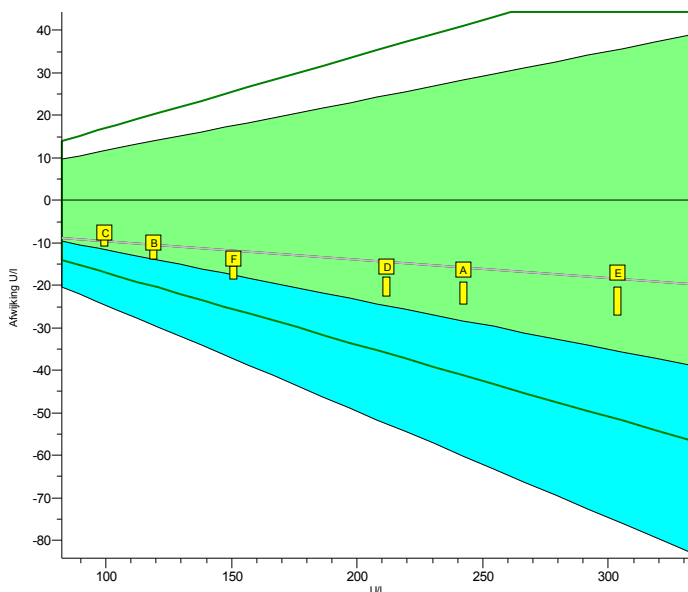
Legend



IFCC traceable IFCC non-traceable

INPUTS 2013.1

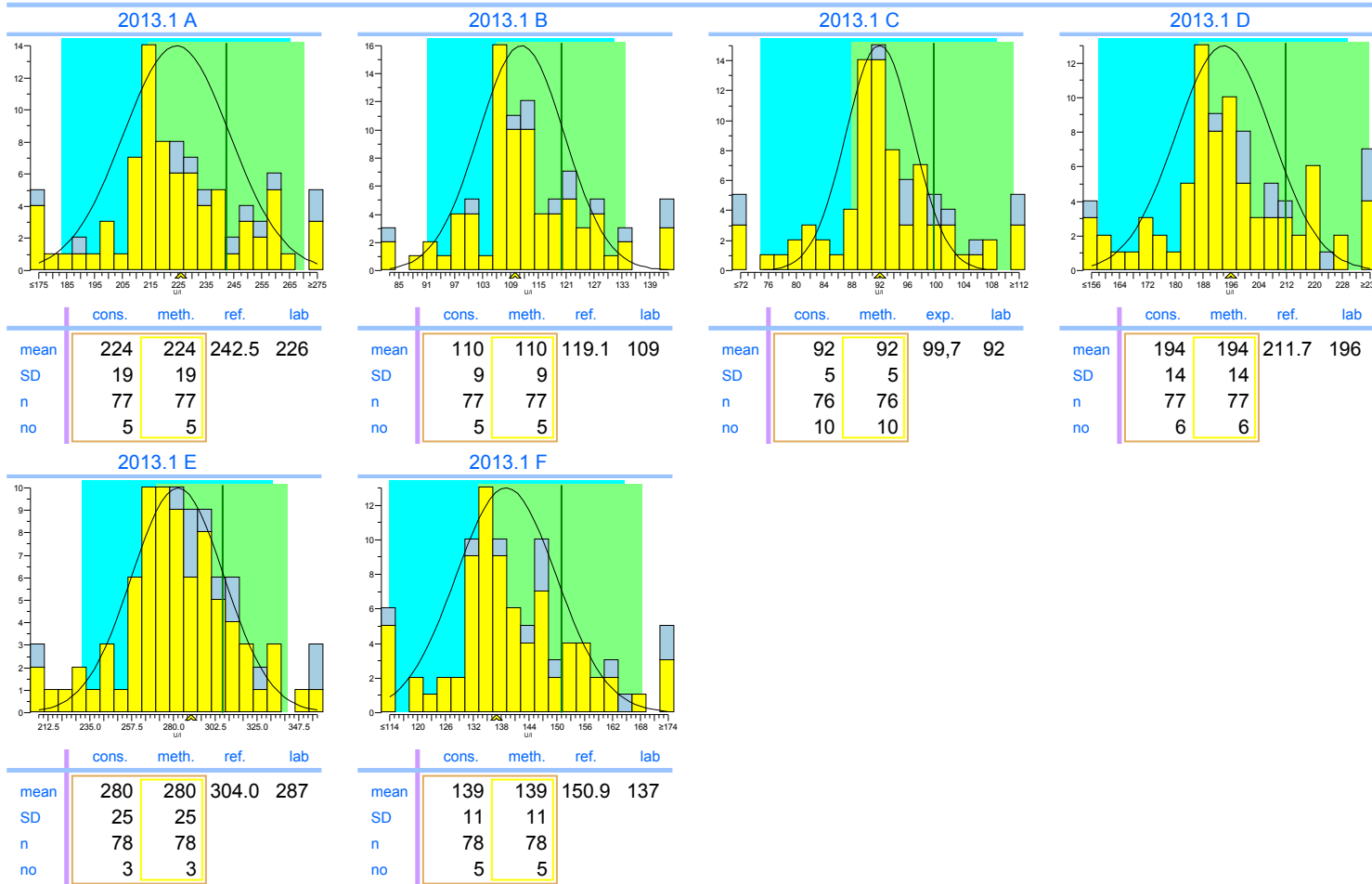
Alk. Phosphatase

units: U/l



	2013.1	cumulative
Trueness	-7.2%	-7.2%
Precision	1.0%	1.0%
Number	6	6
Outliers	0	0
Sigma-TE	5.1	5.1
Sigma-SA	6.0 2	6.0 2
Score pictogram		
Regression line	$-5 + 0.956 \cdot x$	$-5 + 0.956 \cdot x$

Consensus group IFCC traceerbaar
Method IFCC traceable



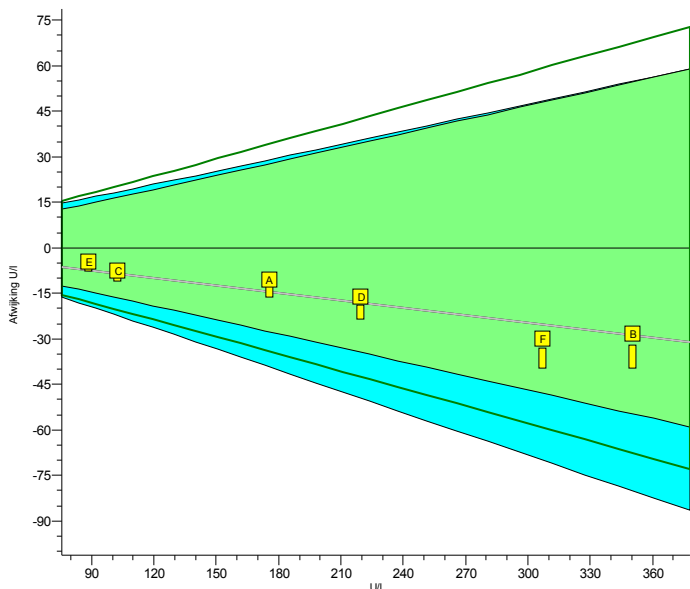
Legend

IFCC traceable IFCC non-traceable

INPUTS 2013.1

Amylase

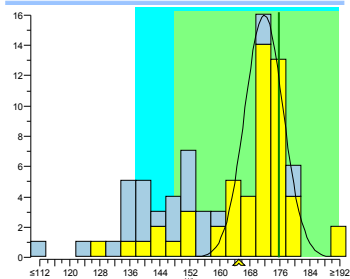
units: U/l



	2013.1	cumulative
Trueness	-7.9%	-7.9%
Precision	0.92%	0.92%
Number	6	6
Outliers	0	0
Sigma-TE	6.0	6.0
Sigma-SA	6.0	6.0
Score pictogram		
Regression line	$0 + 0.918 \cdot x$	$0 + 0.918 \cdot x$

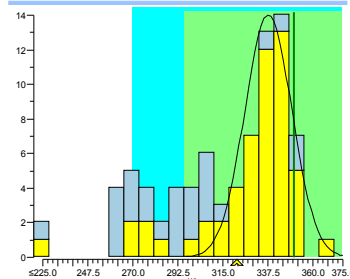
Consensus group IFCC traceerbaar
Method IFCC traceable

2013.1 A



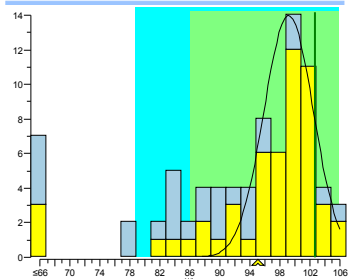
	cons.	meth.	ref.	lab
mean	172	172	175.8	165
SD	5	5		
n	53	53		
no	11	11		

2013.1 B



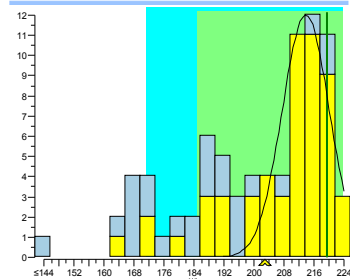
	cons.	meth.	ref.	lab
mean	338	338	350.5	322
SD	12	12		
n	53	53		
no	7	7		

2013.1 C



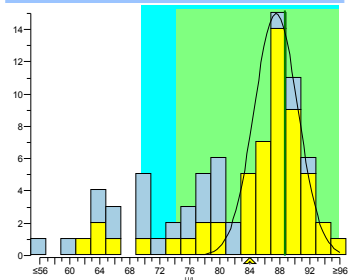
	cons.	meth.	exp.	lab
mean	99	99	102.7	95
SD	3	3		
n	53	53		
no	8	8		

2013.1 D



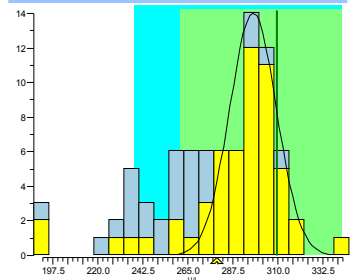
	cons.	meth.	ref.	lab
mean	214	214	219.4	203
SD	6	6		
n	54	54		
no	10	10		

2013.1 E



	cons.	meth.	ref.	lab
mean	87	87	88.7	84
SD	3	3		
n	54	54		
no	10	10		

2013.1 F



	cons.	meth.	ref.	lab
mean	295	295	307.0	277
SD	12	12		
n	54	54		
no	8	8		

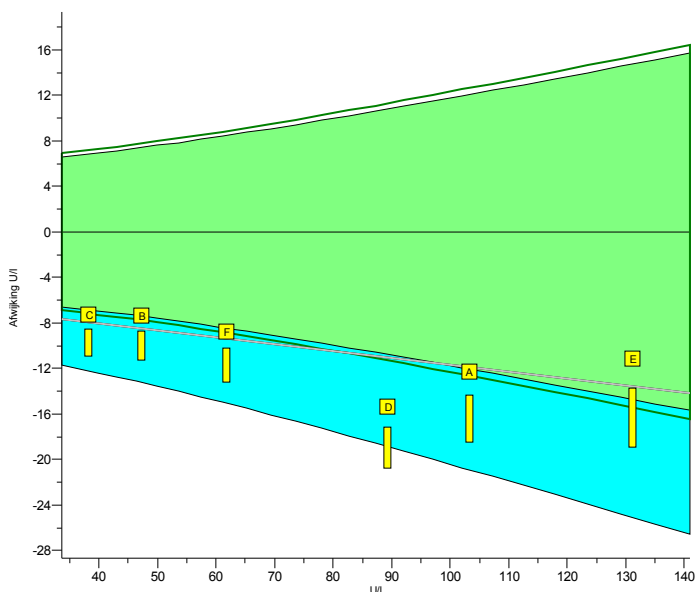
Legend

 IFCC traceable  IFCC non-traceable

INPUTS 2013.1

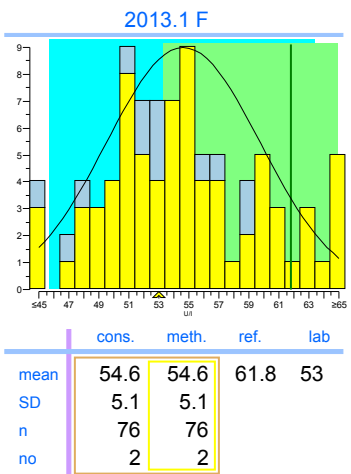
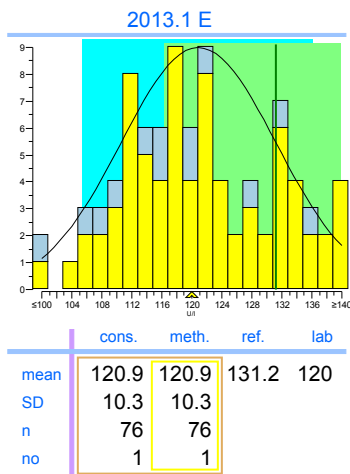
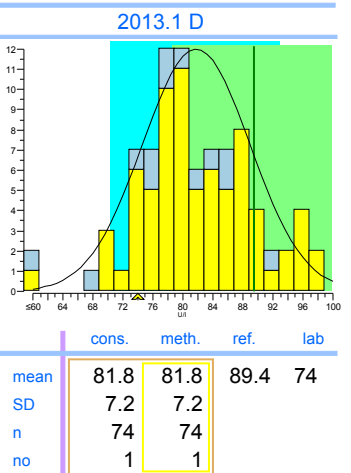
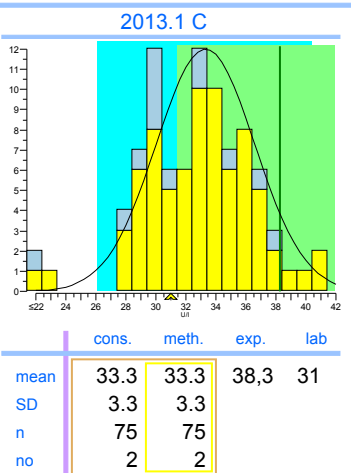
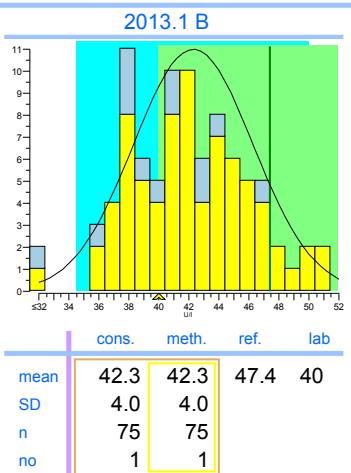
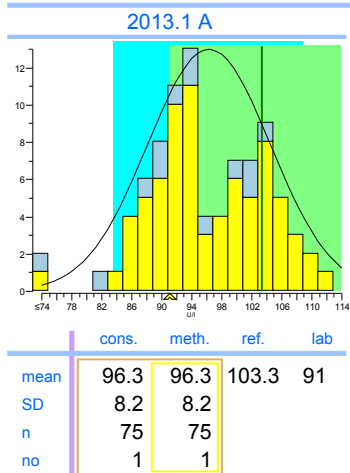
ASAT

units: U/I



	2013.1	cumulative
Trueness	-13%	-13%
Precision	3.9%	3.9%
Number	6	6
Outliers	0	0
Sigma-TE	0.5	0.5
Sigma-SA	0.8 0	0.8 0
Score pictogram		
Regression line	$-5.6 + 0.939.x$	$-5.6 + 0.939.x$

Consensus group IFCC traceerbaar
Method IFCC traceable



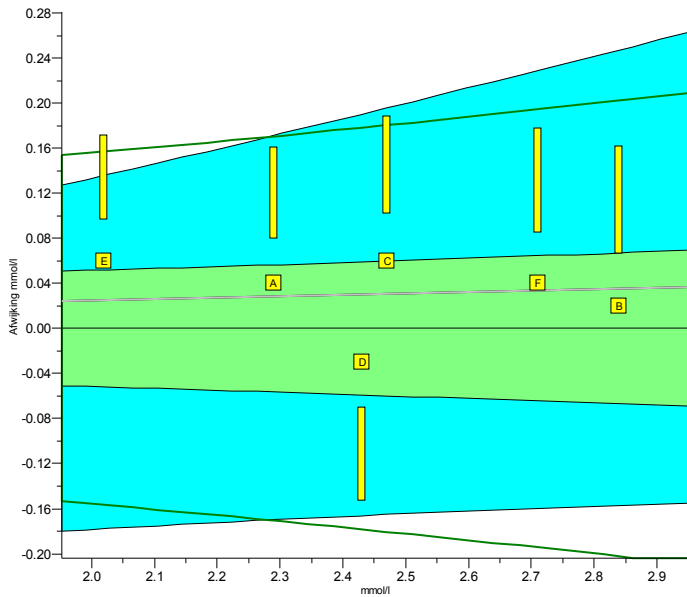
Legend

IFCC traceable IFCC non-traceable

INPUTS 2013.1

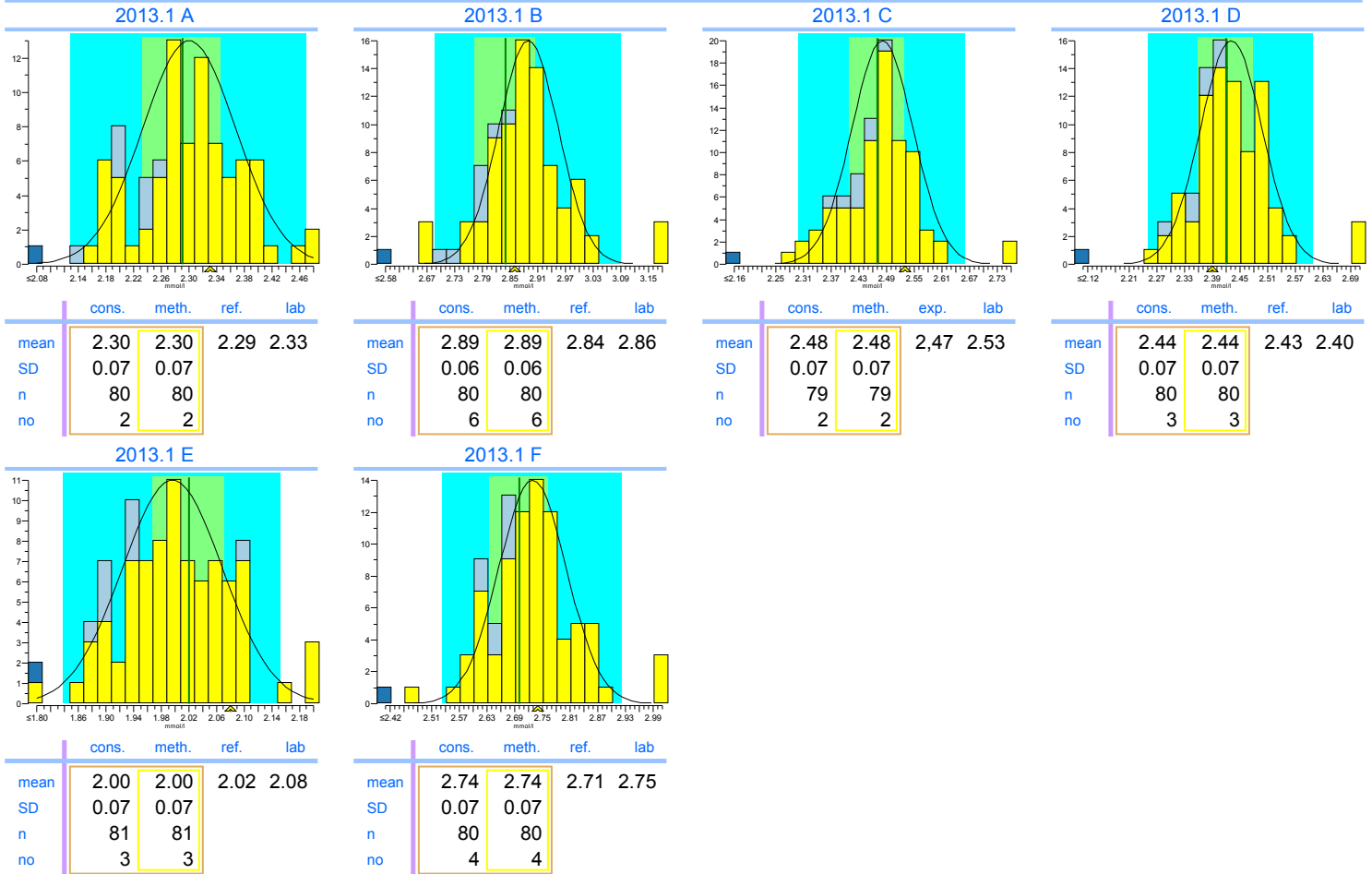
Calcium

units: mmol/l



	2013.1	cumulative
Trueness	+1.3%	+1.3%
Precision	1.4%	1.4%
Number	6	6
Outliers	0	0
Sigma-TE	1.3	1.3
Sigma-SA	4.8 2	4.8 2
Score pictogram		
Regression line	<u>0.00 + 1.012.x</u>	<u>0.00 + 1.012.x</u>

Consensus group	Colorimetrisch
Method	Colorimetric, automatic, discrete



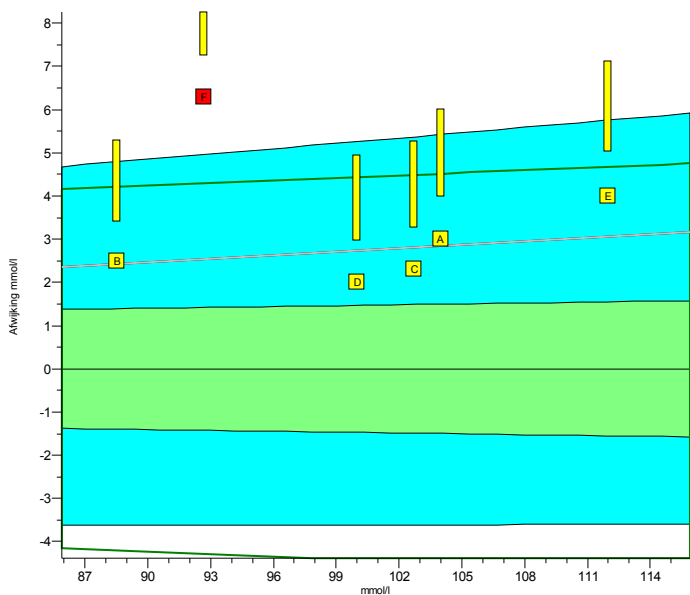
Legend

- Colorimetric, automatic, discrete
- ISE indirect (with predilution)
- Other methods

INPUTS 2013.1

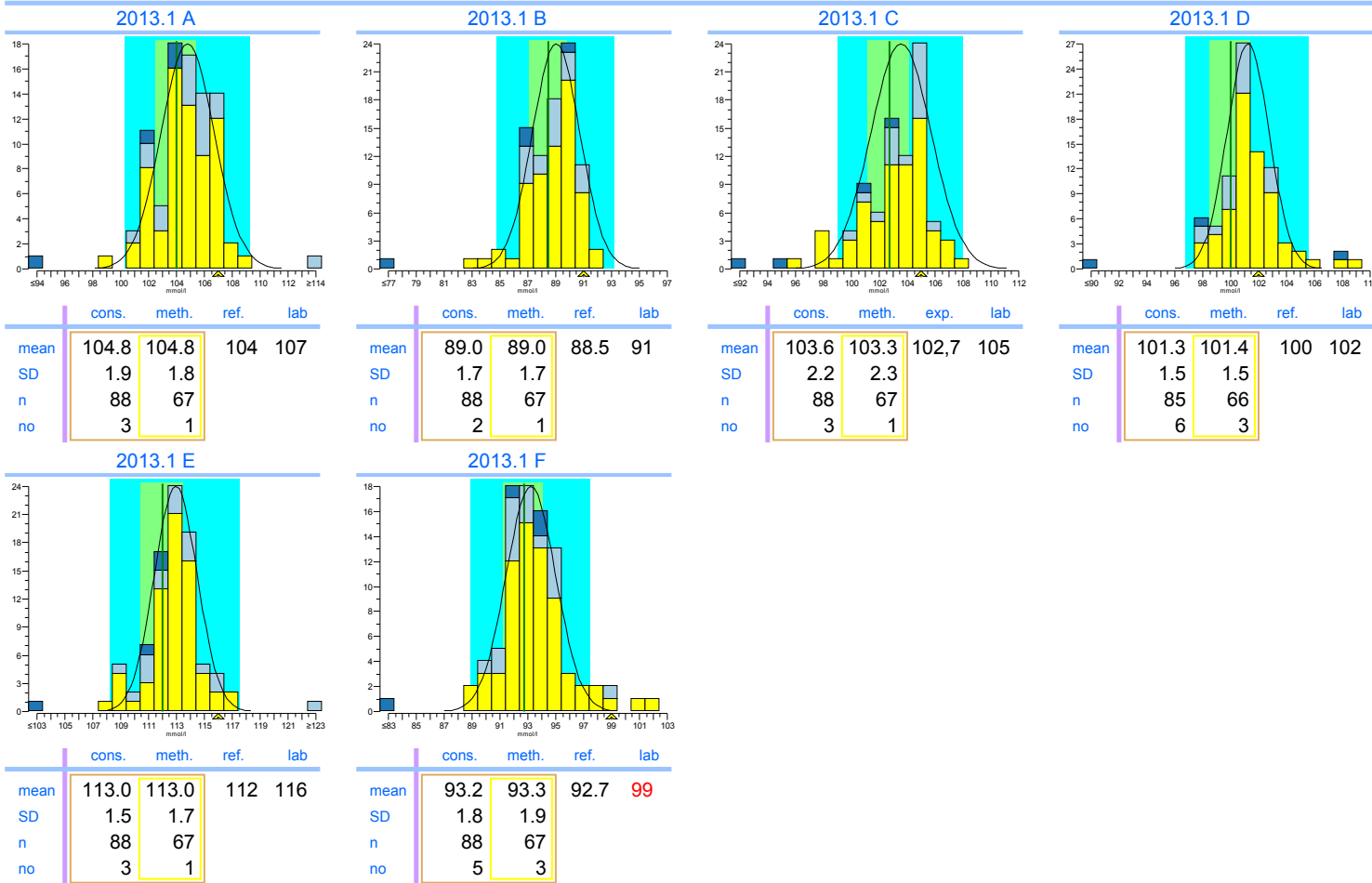
Chloride

units: mmol/l



	2013.1	cumulative
Trueness	+2.7%	+2.7%
Precision	0.78%	0.78%
Number	6	6
Outliers	1	1
Sigma-TE	-1.2	-1.2
Sigma-SA	2.2 1	2.2 1
Score pictogram	1 0 0 0	1 0 0 0
Regression line	$0.0 + 1.027.x$	$0.0 + 1.027.x$

Consensus group ISE/Colorimetrie
Method ISE indirect (with predilution)



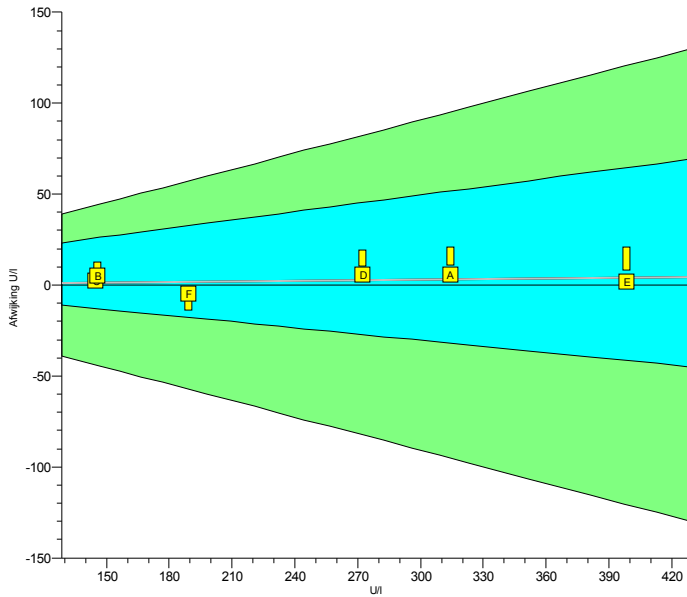
Legend

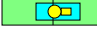



INPUTS 2013.1

CK

units: U/I



	2013.1	cumulative
Trueness	+1.0%	+1.0%
Precision	1.3%	1.3%
Number	6	6
Outliers	0	0
Sigma-TE	6.0 2	6.0 2
Sigma-SA	6.0	6.0
Score pictogram		
Regression line	$0 + 1.010 \cdot x$	$0 + 1.010 \cdot x$

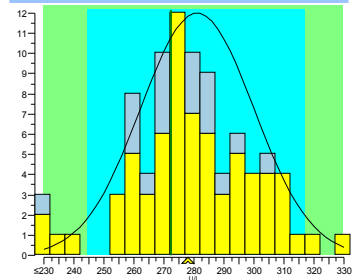
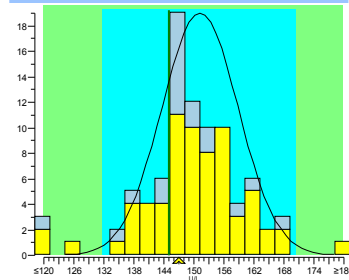
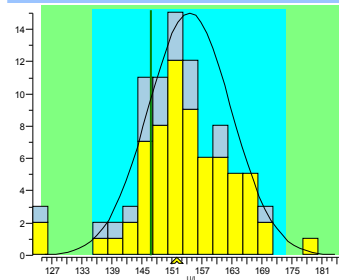
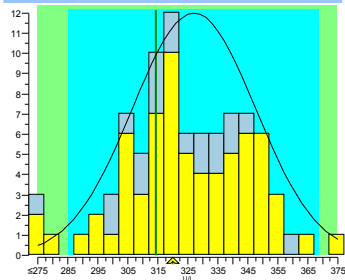
Consensus group IFCC traceerbaar
Method IFCC traceable

2013.1 A

2013.1 B

2013.1 C

2013.1 D



	cons.	meth.	ref.	lab
mean	327	327	314.3	320
SD	21	21		
n	68	68		
no	2	2		

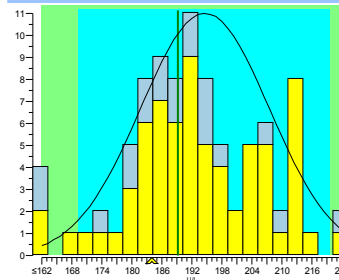
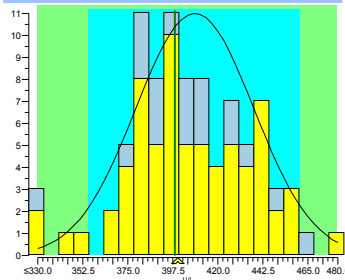
	cons.	meth.	ref.	lab
mean	154	154	145.8	151
SD	8	8		
n	67	67		
no	3	3		

	cons.	meth.	exp.	lab
mean	151	151	145	147
SD	8	8		
n	68	68		
no	4	4		

	cons.	meth.	ref.	lab
mean	281	281	272.3	278
SD	19	19		
n	69	69		
no	2	2		

2013.1 E

2013.1 F



	cons.	meth.	ref.	lab
mean	409	409	398.4	400
SD	30	30		
n	69	69		
no	2	2		

	cons.	meth.	ref.	lab
mean	195	195	189.2	184
SD	13	13		
n	69	69		
no	2	2		

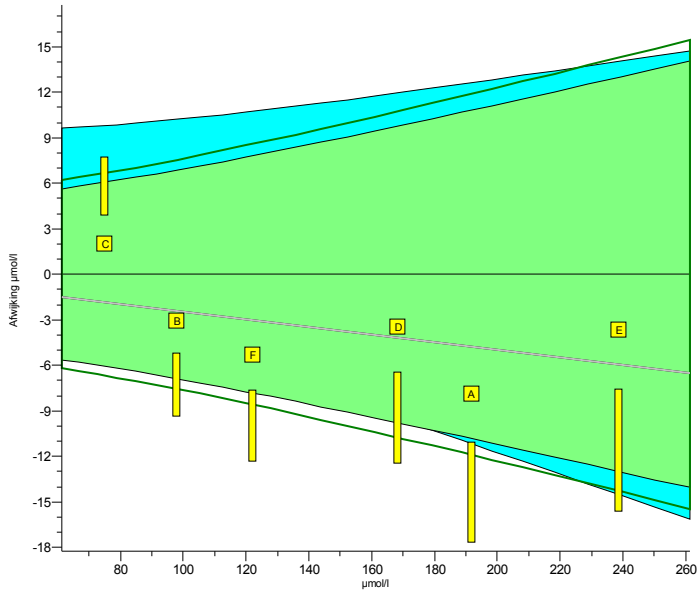
Legend

IFCC traceable IFCC non-traceable

INPUTS 2013.1

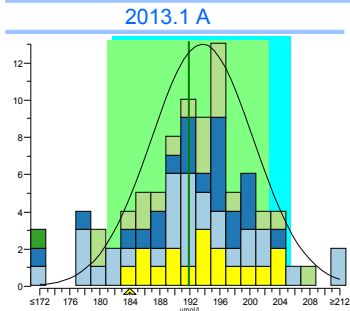
Creatinine

units: $\mu\text{mol/l}$

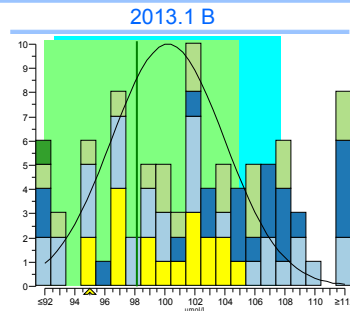


	2013.1	cumulative
Trueness	-2.4%	-2.4%
Precision	1.8%	1.8%
Number	6	6
Outliers	0	0
Sigma-TE	2.9	2.9
Sigma-SA	3.3	3.3
Score pictogram		
Regression line	$0.0 + 0.975.x$	$0.0 + 0.975.x$

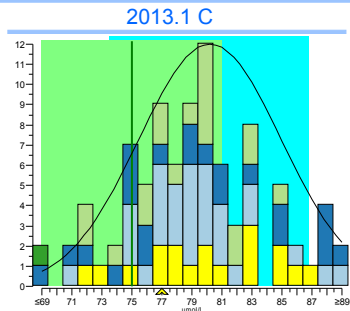
Consensus group: Enzymatische kreatinine
Method: Enzymatic, automatic



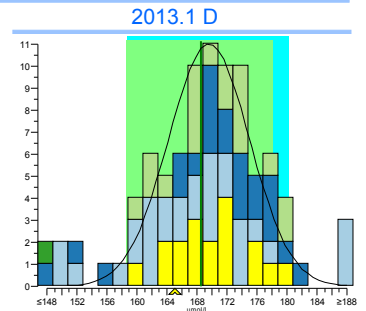
	cons.	meth.	ref.	lab
mean	193.7	193.7	191.9	184
SD	6.8	6.8		
n	17	17		
no	0	0		



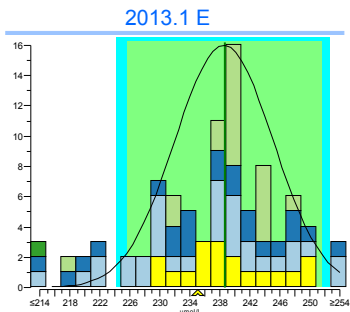
	cons.	meth.	ref.	lab
mean	100.2	100.2	98.11	95
SD	3.8	3.8		
n	18	18		
no	0	0		



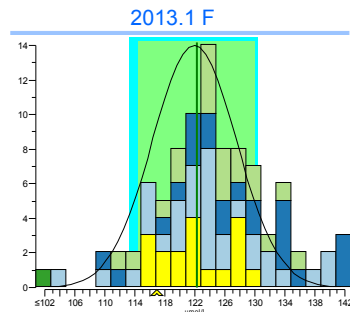
	cons.	meth.	exp.	lab
mean	80.2	80.2	75	77
SD	4.7	4.7		
n	18	18		
no	0	0		



	cons.	meth.	ref.	lab
mean	169.6	169.6	168.5	165
SD	5.4	5.4		
n	18	18		
no	0	0		



	cons.	meth.	ref.	lab
mean	238.5	238.5	238.7	235
SD	6.6	6.6		
n	18	18		
no	0	0		



	cons.	meth.	ref.	lab
mean	121.9	121.9	122.3	117
SD	5.6	5.6		
n	18	18		
no	0	0		

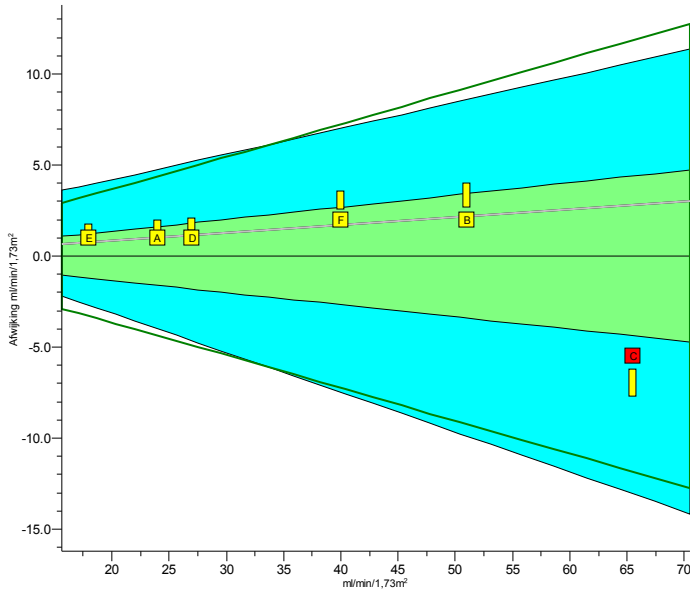
Legend



- Enzymatic, automatic
- Alk. Picrate, kinetic with compensation
- Alk. Picrate, kinetic
- Alk. Picrate, endpoint
- Other methods

INPUTs 2013.1

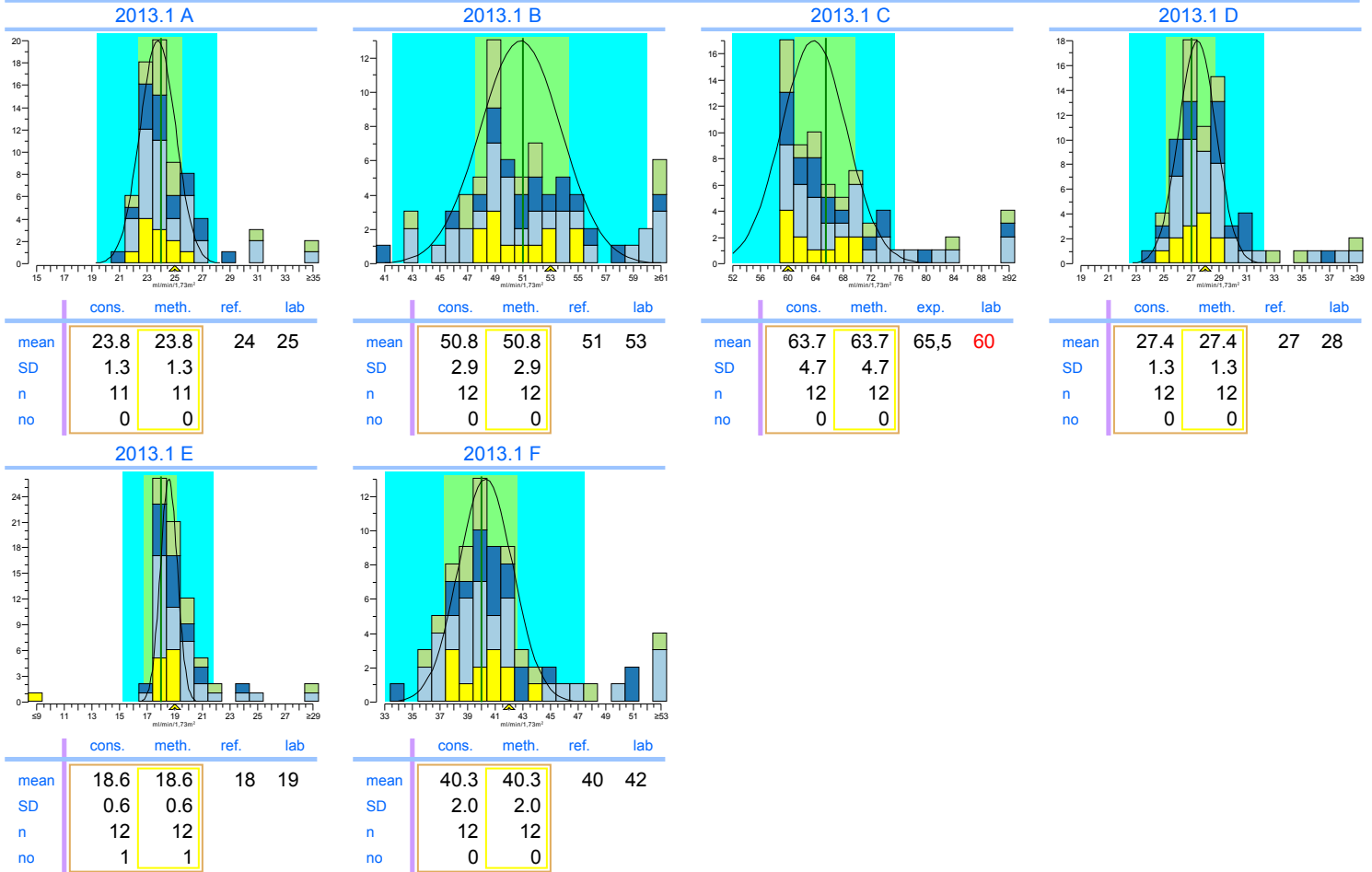
eGFR (F, 55, white)

units: ml/min/1,73m²



	2013.1	cumulative
Trueness	+4.4%	+4.4%
Precision	1.1%	1.1%
Number	6	6
Outliers	1	1
Sigma-TE	2.4	2.4
Sigma-SA	6.0 2	6.0 2
Score pictogram		
Regression line	<u>0.0 + 1.043.x</u>	<u>0.0 + 1.043.x</u>

Consensus group Enzymatische kreatinine
Method Enzymatic, automatic



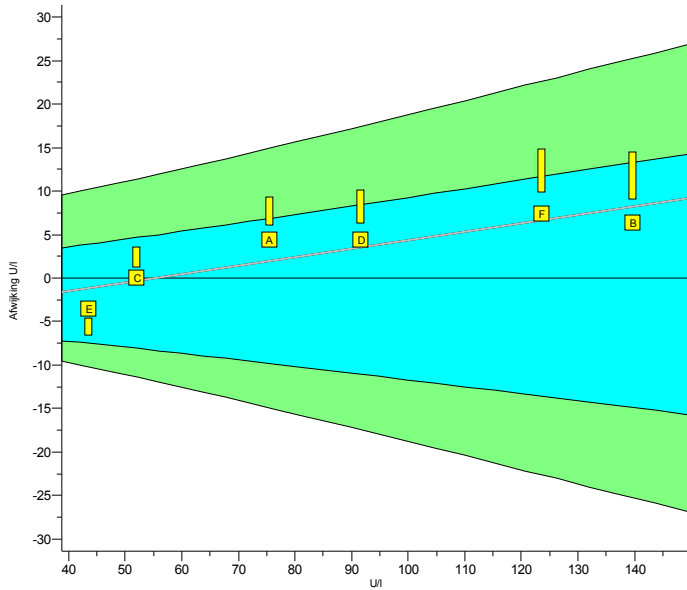
Legend



- Enzymatic, automatic
- Other methods
- Alk. Picrate, kinetic with compensation
- Alk. Picrate, kinetic

INPUTS 2013.1

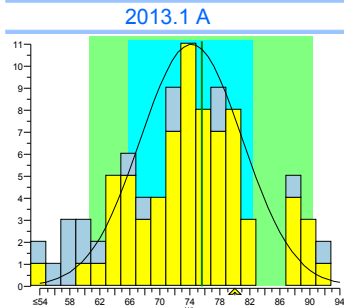
Gamma-GT

units: U/I

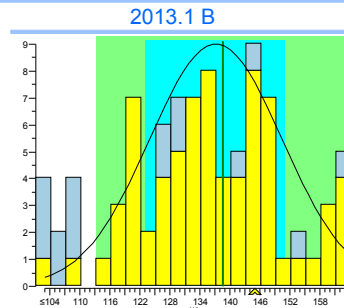


	2013.1	cumulative
Trueness	+3.6%	+3.6%
Precision	2.4%	2.4%
Number	6	6
Outliers	0	0
Sigma-TE	6.0 2	6.0 2
Sigma-SA	4.5	4.5
Score pictogram		
Regression line	$-5.4 + 1.097 \cdot x$	$-5.4 + 1.097 \cdot x$

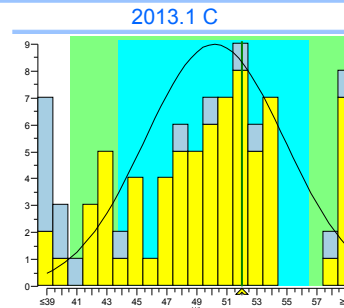
Consensus group IFCC traceerbaar
Method IFCC traceable



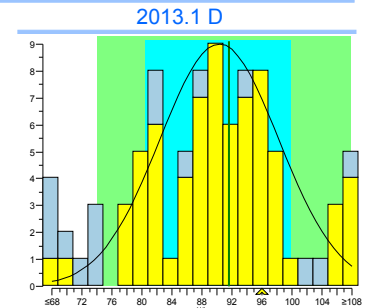
	cons.	meth.	ref.	lab
mean	74.2	74.2	75.6	80
SD	6.8	6.8		
n	72	72		
no	1	1		



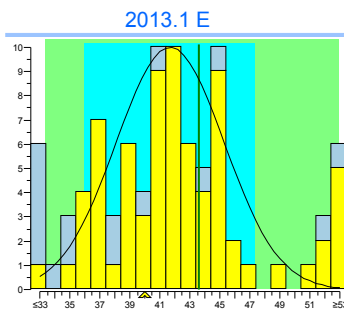
	cons.	meth.	ref.	lab
mean	138.2	138.2	139.7	146
SD	13.3	13.3		
n	72	72		
no	1	1		



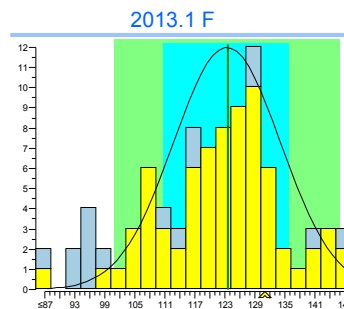
	cons.	meth.	exp.	lab
mean	50.2	50.2	52	52
SD	4.6	4.6		
n	72	72		
no	2	2		



	cons.	meth.	ref.	lab
mean	90.3	90.3	91.6	96
SD	7.9	7.9		
n	71	71		
no	1	1		



	cons.	meth.	ref.	lab
mean	41.7	41.7	43.6	40
SD	3.6	3.6		
n	73	73		
no	6	6		



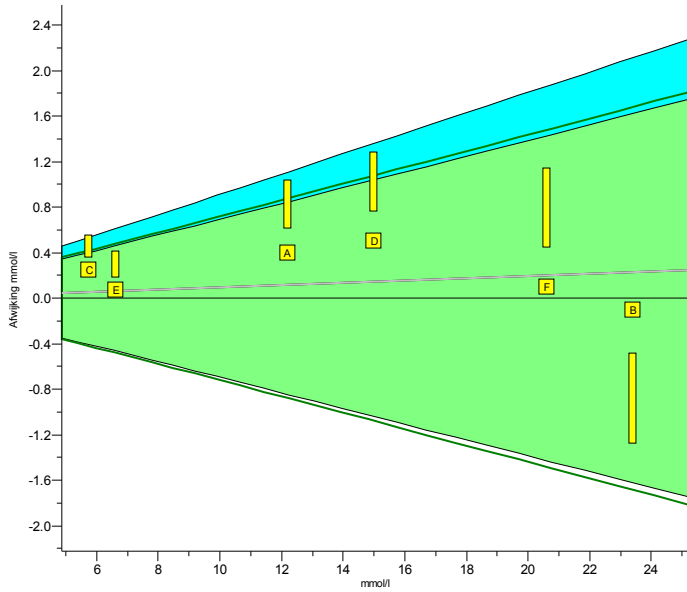
	cons.	meth.	ref.	lab
mean	123.4	123.4	123.6	131
SD	10.7	10.7		
n	73	73		
no	1	1		



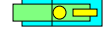
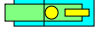
Legend
 IFCC traceable
 IFCC non-traceable

INPUTS 2013.1

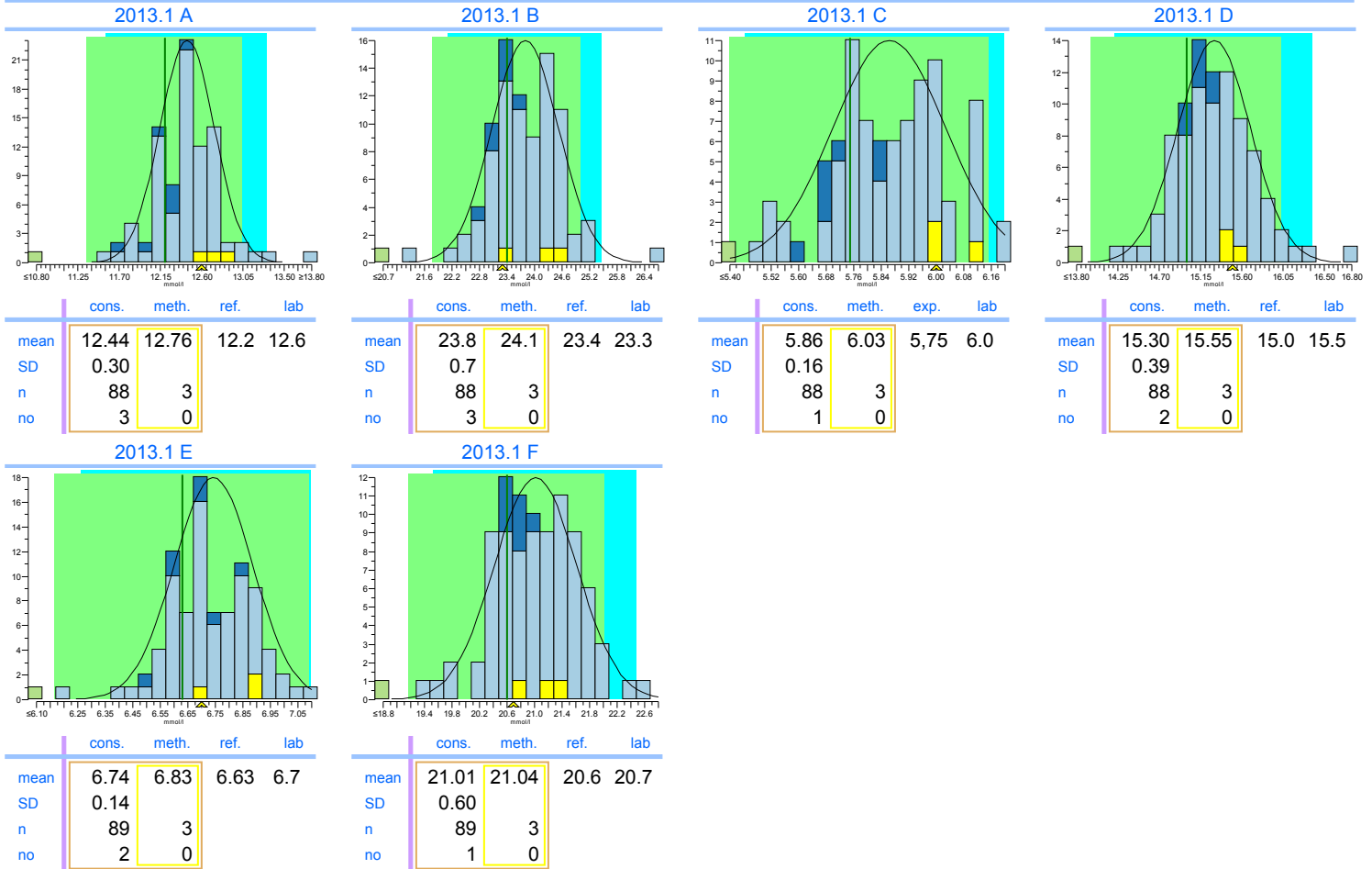
Glucose

units: mmol/l



	2013.1	cumulative
Trueness	+1.5%	+1.5%
Precision	1.8%	1.8%
Number	6	6
Outliers	0	0
Sigma-TE	4.3	4.3
Sigma-SA	4.5 	4.5 
Score pictogram		
Regression line	$0.00 + 1.010 \cdot x$	$0.00 + 1.010 \cdot x$

Consensus group: Natte chemie
Method: Glucose-oxidase/POD,automatic



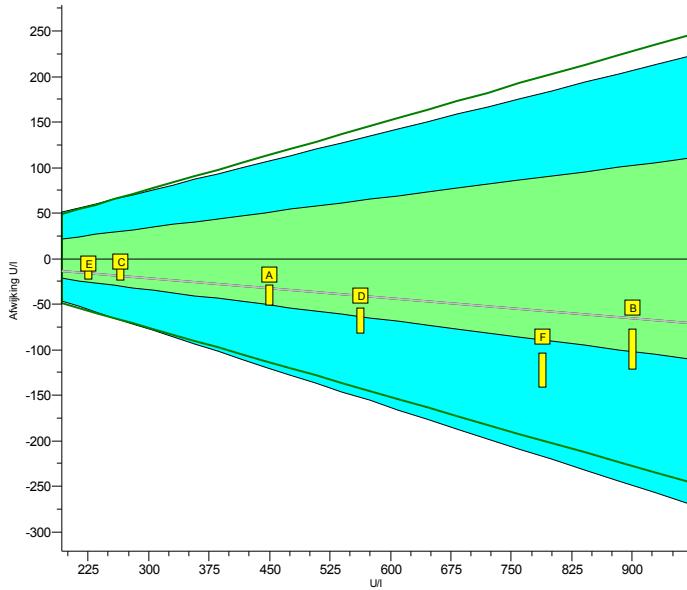
Legend



- Glucose-oxidase/POD,automatic
- Hexokinase, automatic
- Glucose-oxidase, amperometric, H2O2
- Other methods

INPUTs 2013.1

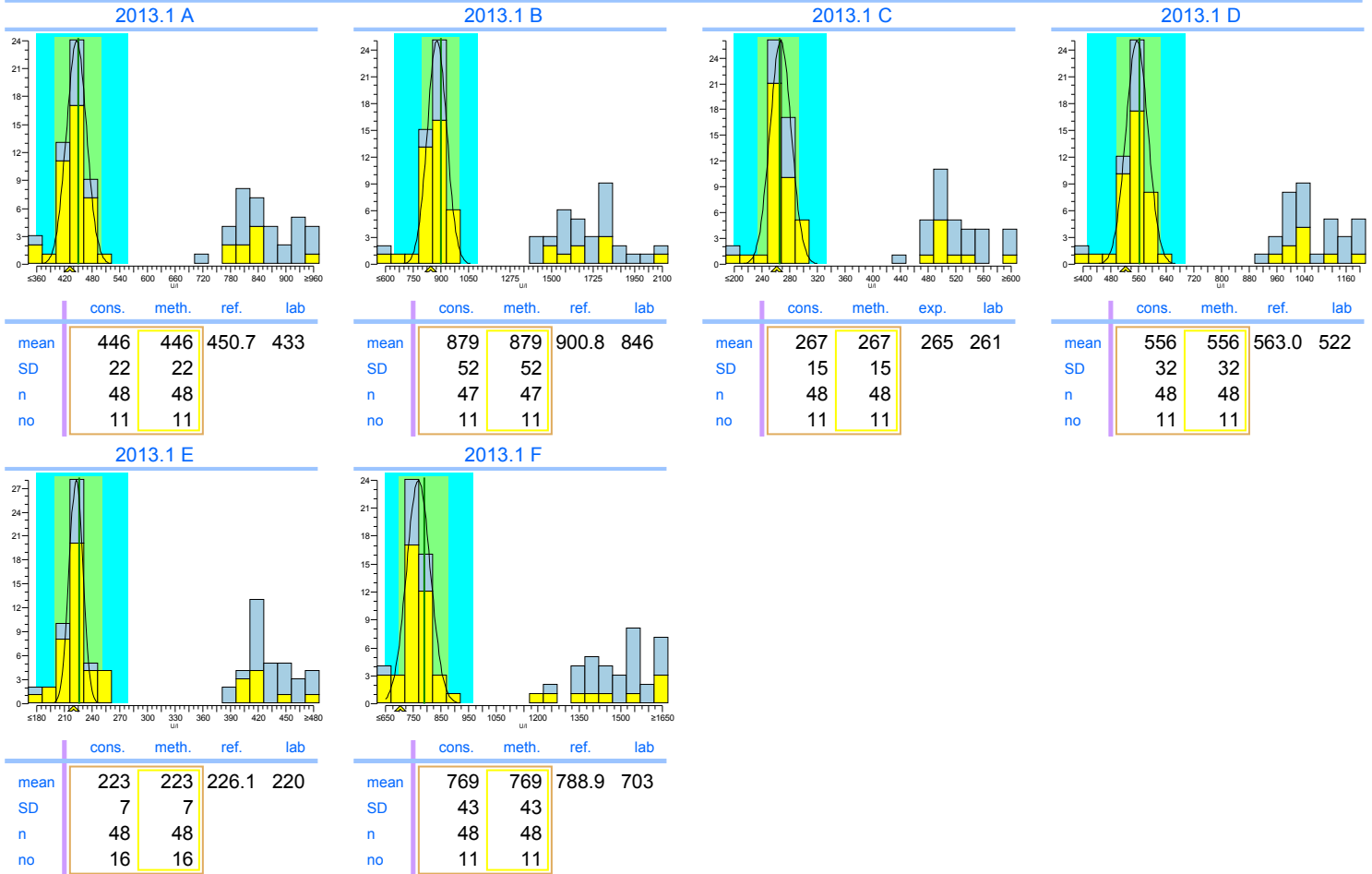
LD

units: U/I



	2013.1	cumulative
Trueness	-6.6%	-6.6%
Precision	2.8%	2.8%
Number	6	6
Outliers	0	0
Sigma-TE	3.5	3.5
Sigma-SA	6.0 2	6.0 2
Score pictogram		
Regression line	$0 + 0.927 \cdot x$	$0 + 0.927 \cdot x$

Consensus group IFCC tracerbaar
Method IFCC traceable



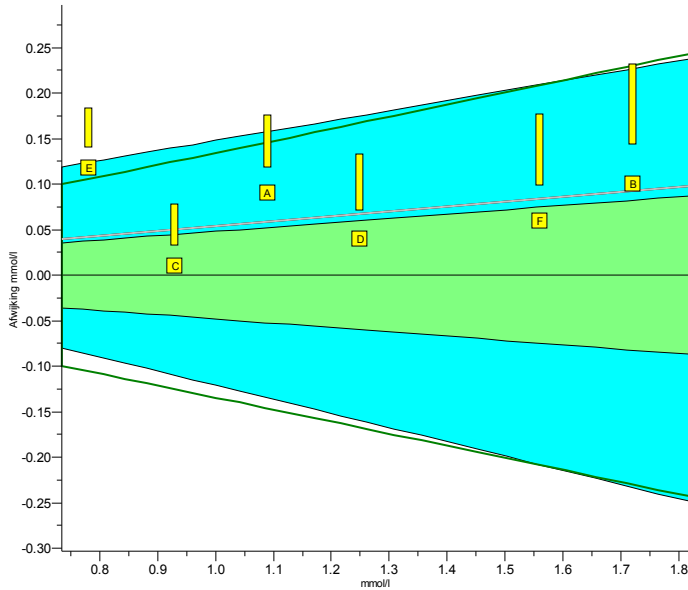
Legend

IFCC traceable IFCC non-traceable

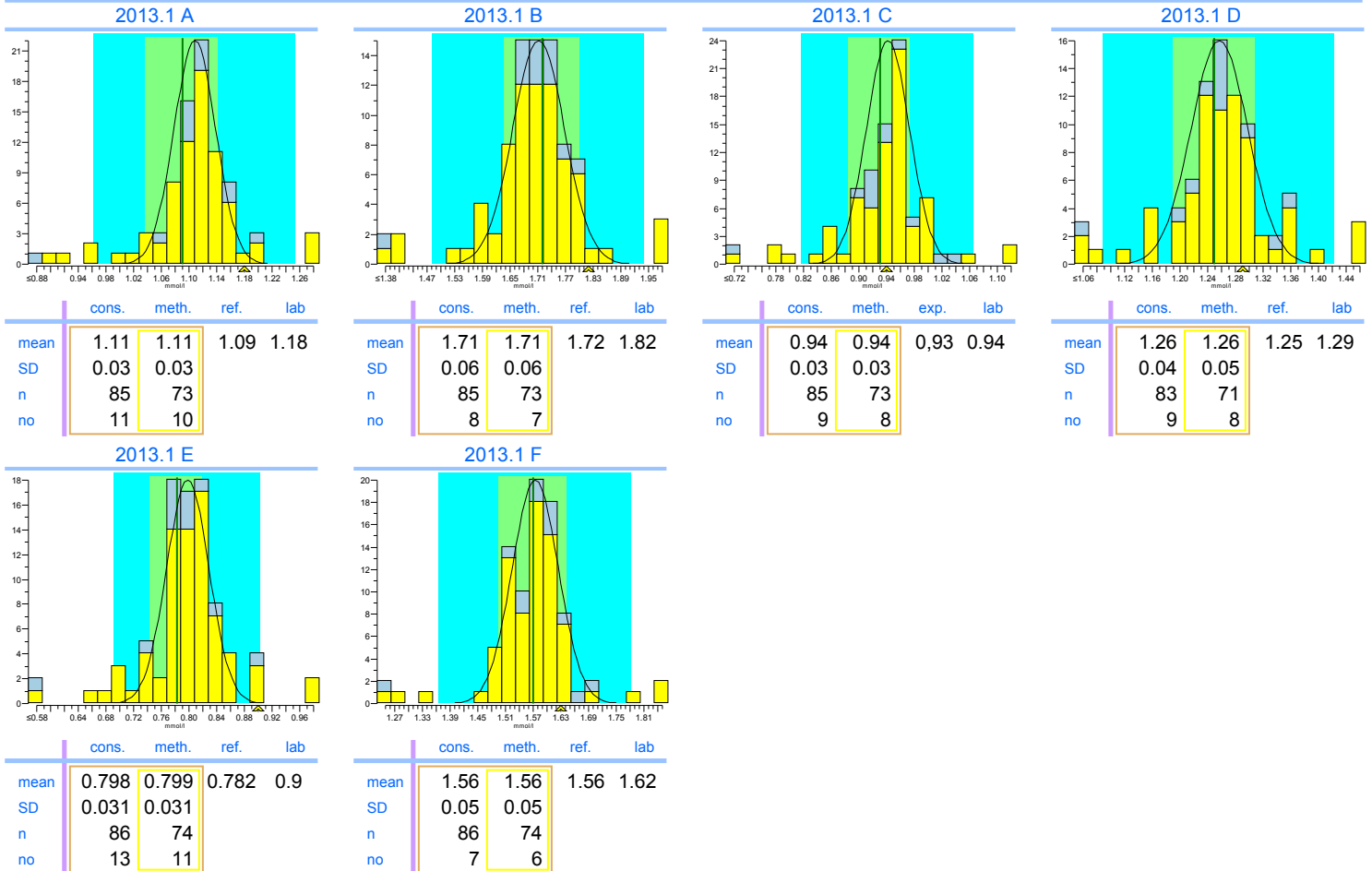
INPUTS 2013.1

Magnesium

units: mmol/l



	2013.1	cumulative
Trueness	+5.7%	+5.7%
Precision	3.3%	3.3%
Number	6	6
Outliers	0	0
Sigma-TE	0.3	0.3
Sigma-SA	4.5 1	4.5 1
Score pictogram		
Regression line	$0.00 + 1.054 \cdot x$	$0.00 + 1.054 \cdot x$
Consensus group	Overall	
Method	Colorimetric	



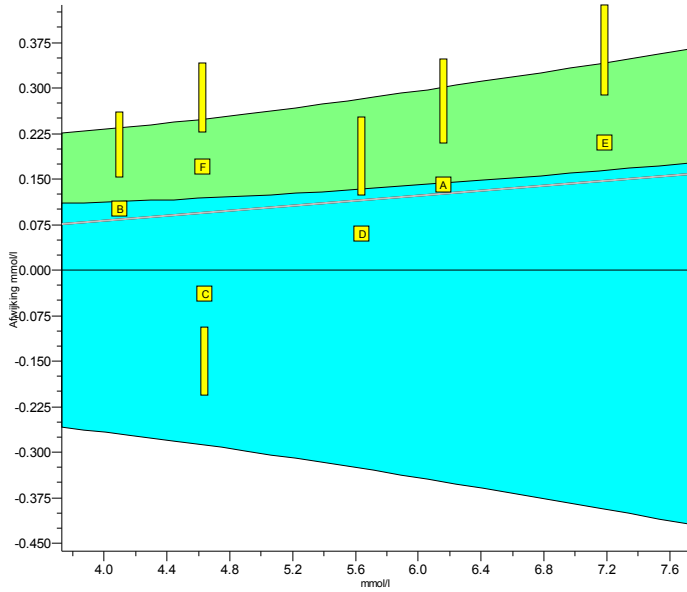
Legend


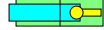


INPUTS 2013.1

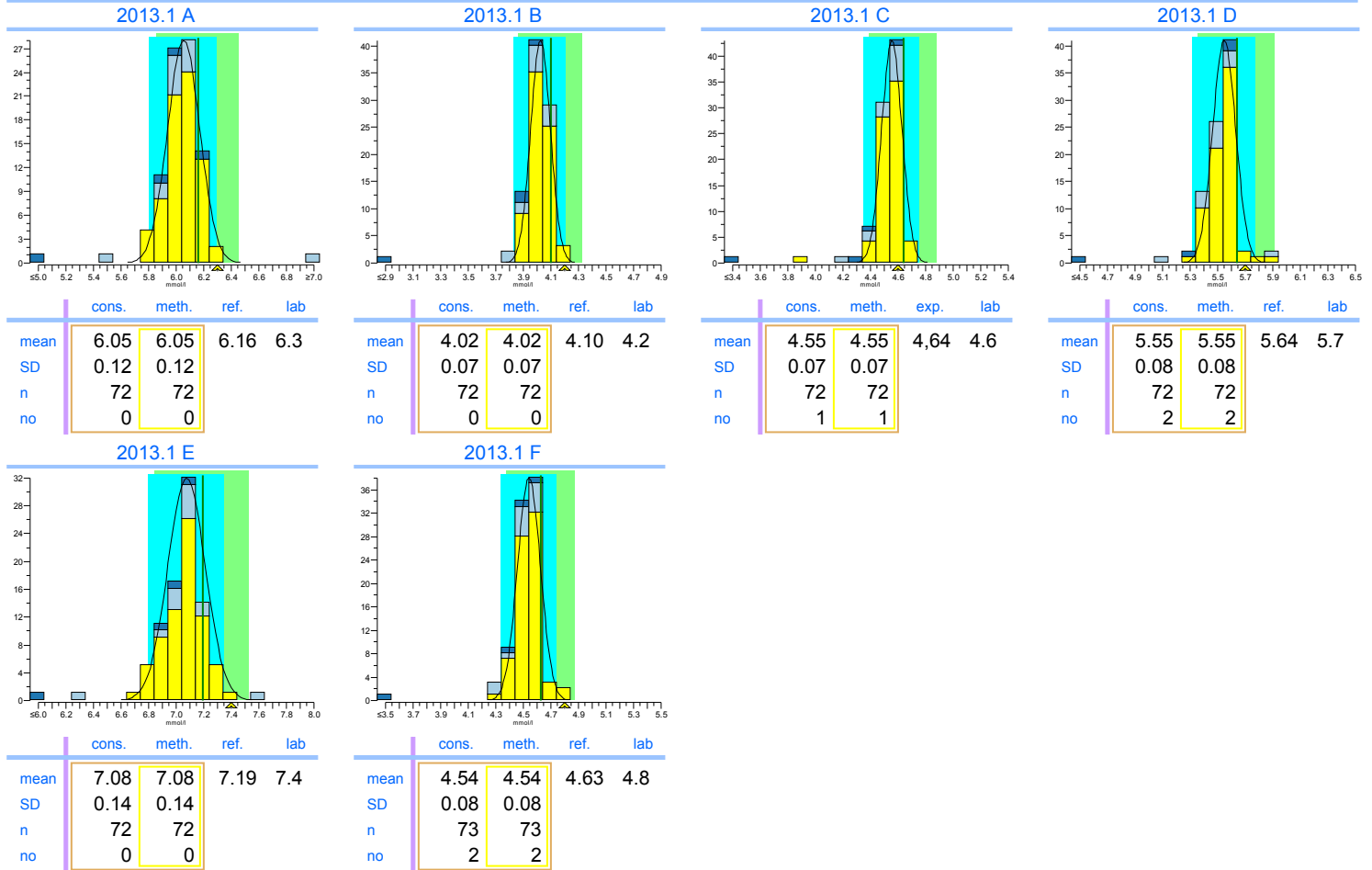
Potassium

units: mmol/l



	2013.1	cumulative
Trueness	+2.0%	+2.0%
Precision	1.5%	1.5%
Number	6	6
Outliers	0	0
Sigma-TE	3.9 1	3.9 1
Sigma-SA	2.9	2.9
Score pictogram		
Regression line	$0.00 + 1.021 \cdot x$	$0.00 + 1.021 \cdot x$

Consensus group	ISE verdund/Vlamfotometrie
Method	ISE indirect (with predilution)



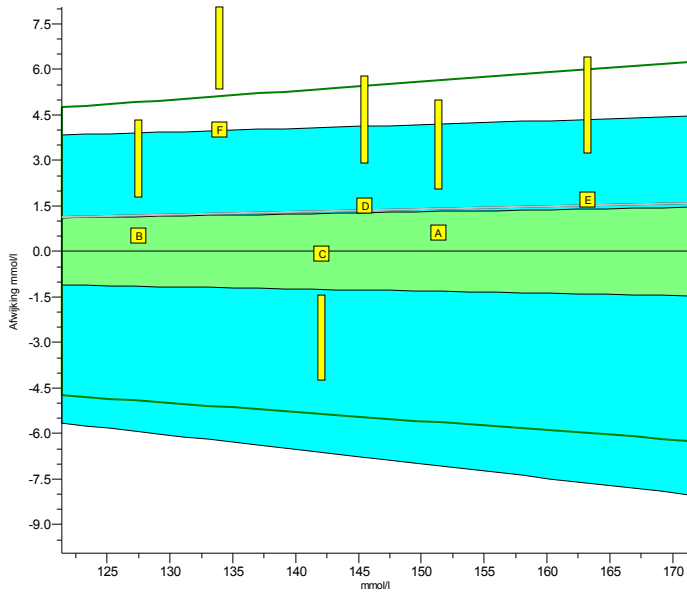
Legend

- ISE indirect (with predilution)
- ISE direct (no predilution)
- Other methods

INPUTS 2013.1

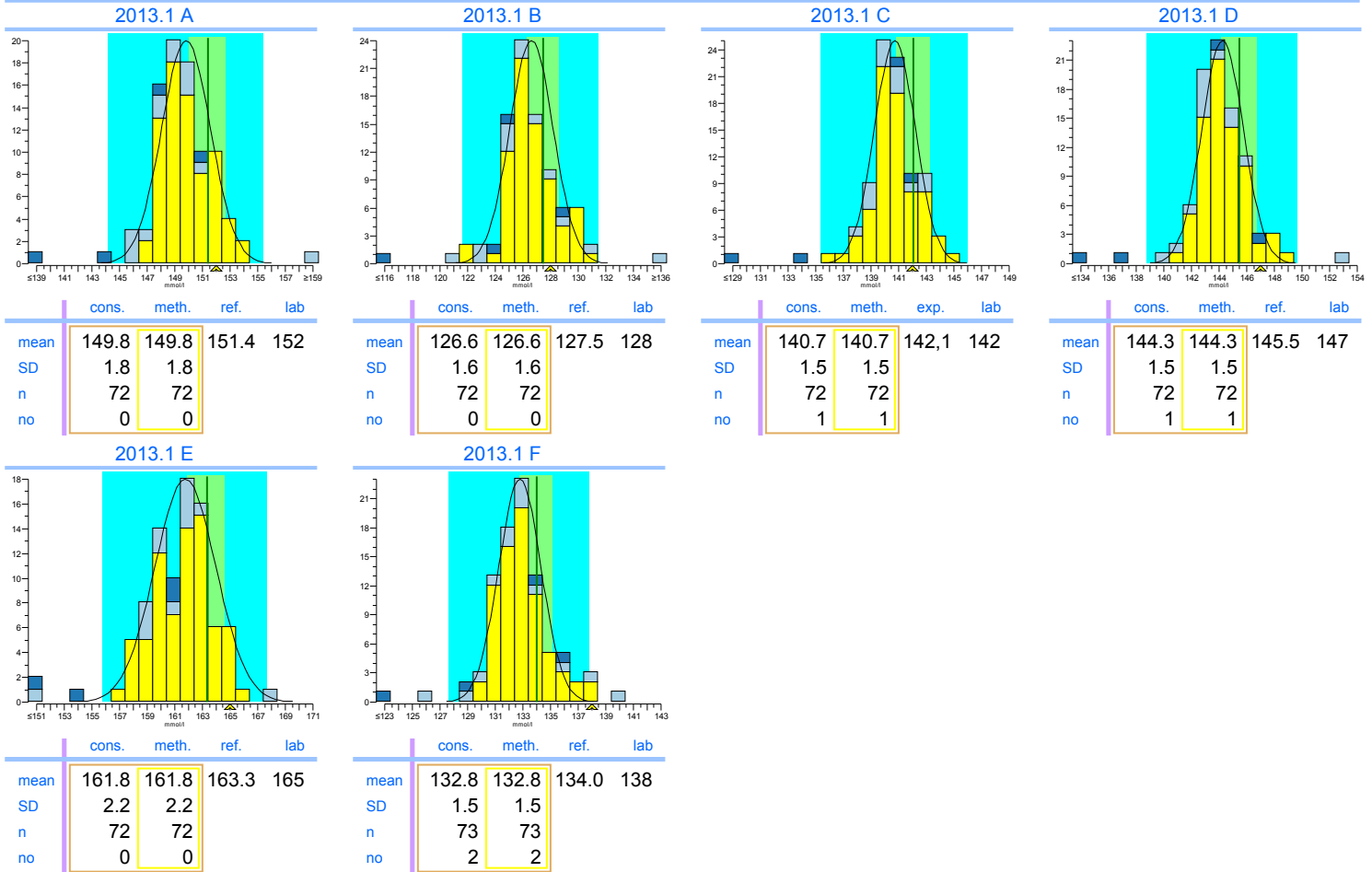
Sodium

units: mmol/l



	2013.1	cumulative
Trueness	+0.95%	+0.95%
Precision	1.0%	1.0%
Number	6	6
Outliers	0	0
Sigma-TE	0.7	0.7
Sigma-SA	4.3 1	4.3 1
Score pictogram		
Regression line	$0.0 + 1.009 \cdot x$	$0.0 + 1.009 \cdot x$

Consensus group ISE verdund/Vlamfotometrie
Method ISE indirect (with predilution)



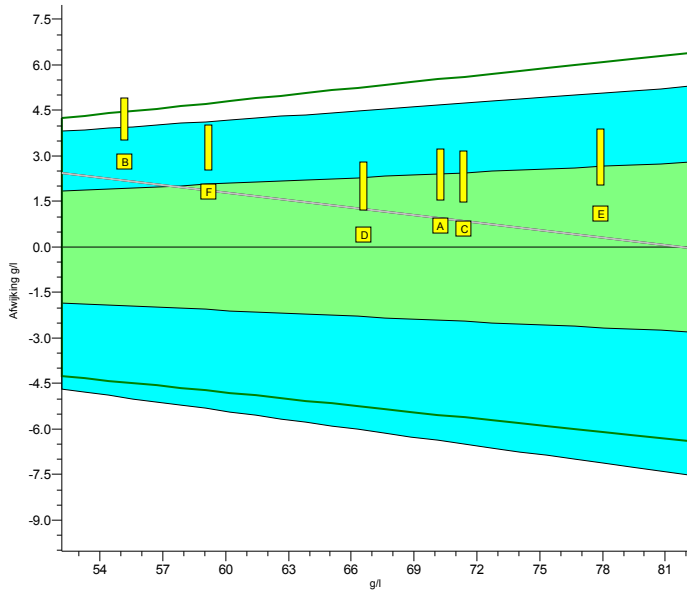
Legend



- ISE indirect (with predilution)
- ISE direct (no predilution)
- Other methods

INPUTS 2013.1

Total Protein

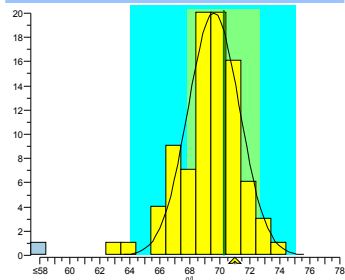
units: g/l



	2013.1	cumulative
Trueness	+1.8%	+1.8%
Precision	1.0%	1.0%
Number	6	6
Outliers	0	0
Sigma-TE	2.3	2.3
Sigma-SA	6.0 2	6.0 2
Score pictogram		
Regression line	$6.7 + 0.918.x$	$6.7 + 0.918.x$

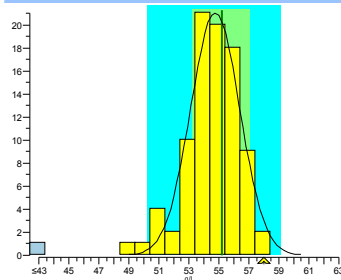
Consensus group Biureet
Method Biurete, automatic

2013.1 A



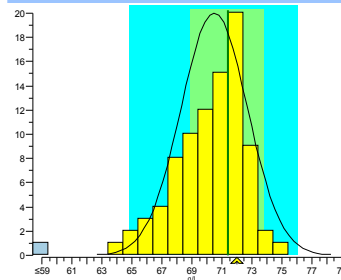
	cons.	meth.	ref.	lab
mean	69.6	69.6	70.3	71
SD	1.7	1.7		
n	88	88		
no	2	2		

2013.1 B



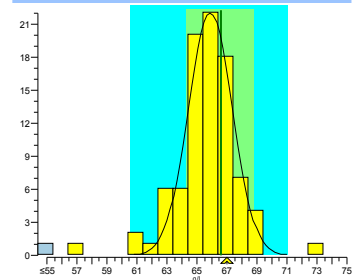
	cons.	meth.	ref.	lab
mean	54.8	54.8	55.2	58
SD	1.6	1.6		
n	88	88		
no	1	1		

2013.1 C



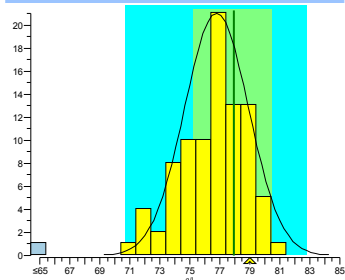
	cons.	meth.	exp.	lab
mean	70.5	70.5	71.4	72
SD	2.2	2.2		
n	87	87		
no	0	0		

2013.1 D



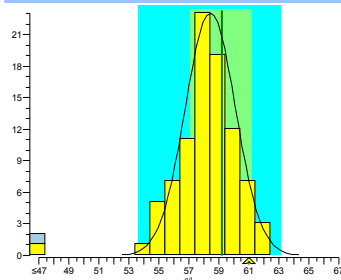
	cons.	meth.	ref.	lab
mean	65.9	65.9	66.6	67
SD	1.5	1.5		
n	88	88		
no	4	4		

2013.1 E



	cons.	meth.	ref.	lab
mean	76.8	76.8	77.9	79
SD	2.1	2.1		
n	88	88		
no	0	0		

2013.1 F



	cons.	meth.	ref.	lab
mean	58.4	58.4	59.2	61
SD	1.7	1.7		
n	89	89		
no	1	1		

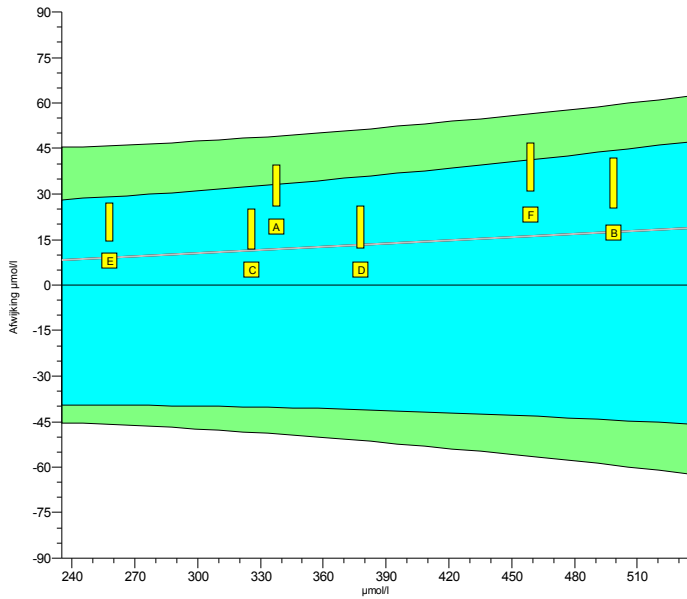
Legend

 Biurete, automatic Other methods

INPUTS 2013.1

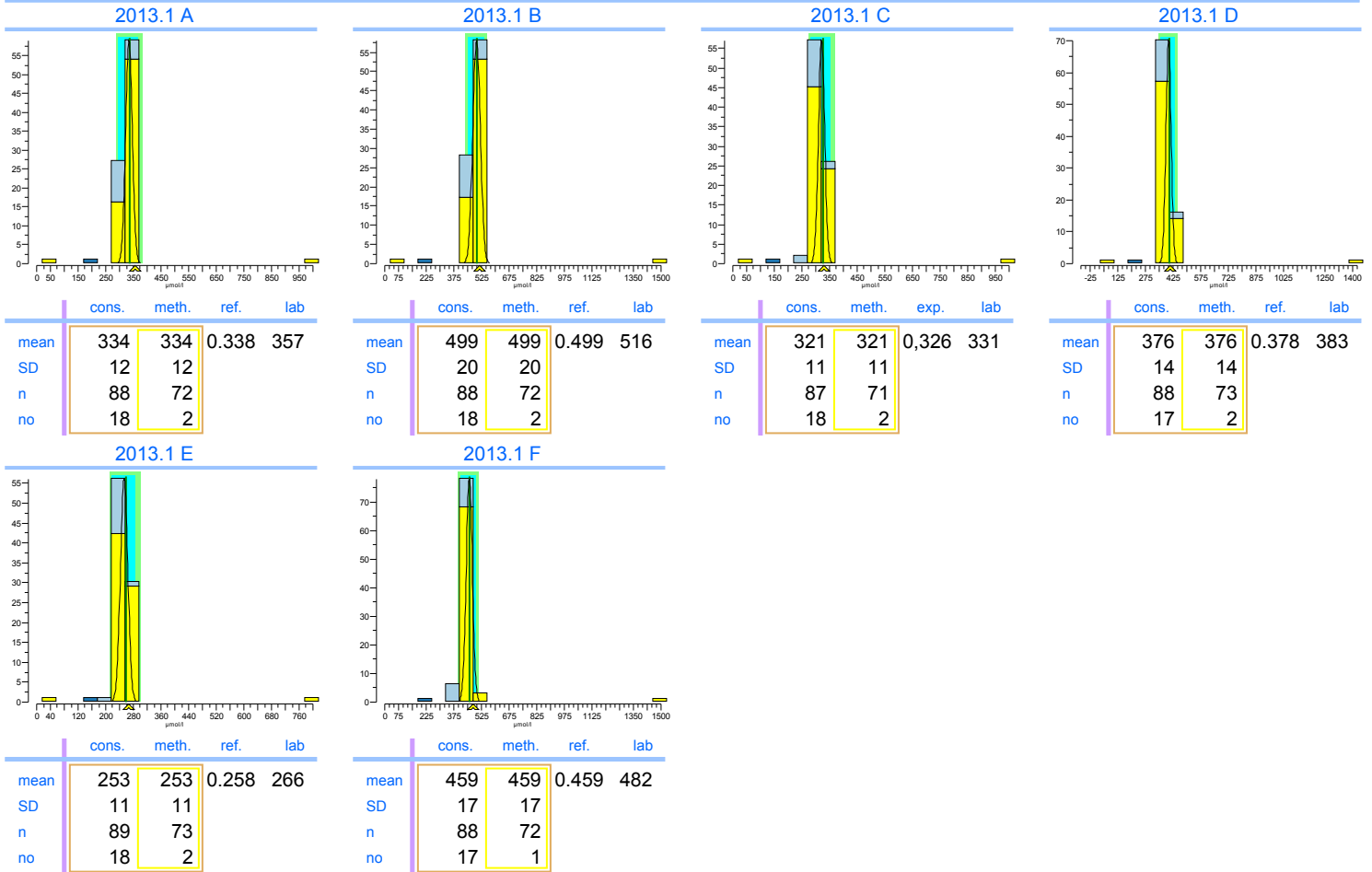
Urate

units: $\mu\text{mol/l}$



	2013.1	cumulative
Trueness	+3.4%	+3.4%
Precision	1.6%	1.6%
Number	6	6
Outliers	0	0
Sigma-TE	6.0 2	6.0 2
Sigma-SA	5.4	5.4
Score pictogram		
Regression line	$0 + 1.035.x$	$0 + 1.035.x$

Consensus group: Colorimetrisch
Method: Uricase, colorim., automatic



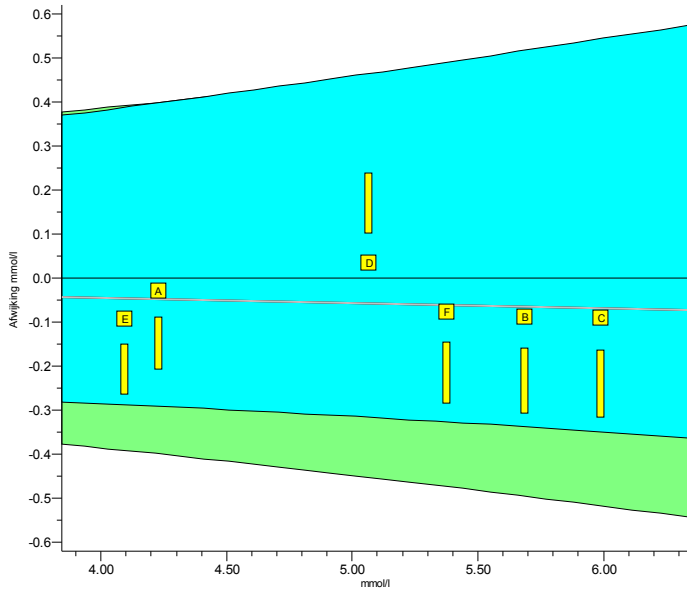
Legend

- Uricase, colorim., automatic
- Uricase, differential UV, automatic
- Overige methoden

INPUTS 2013.1

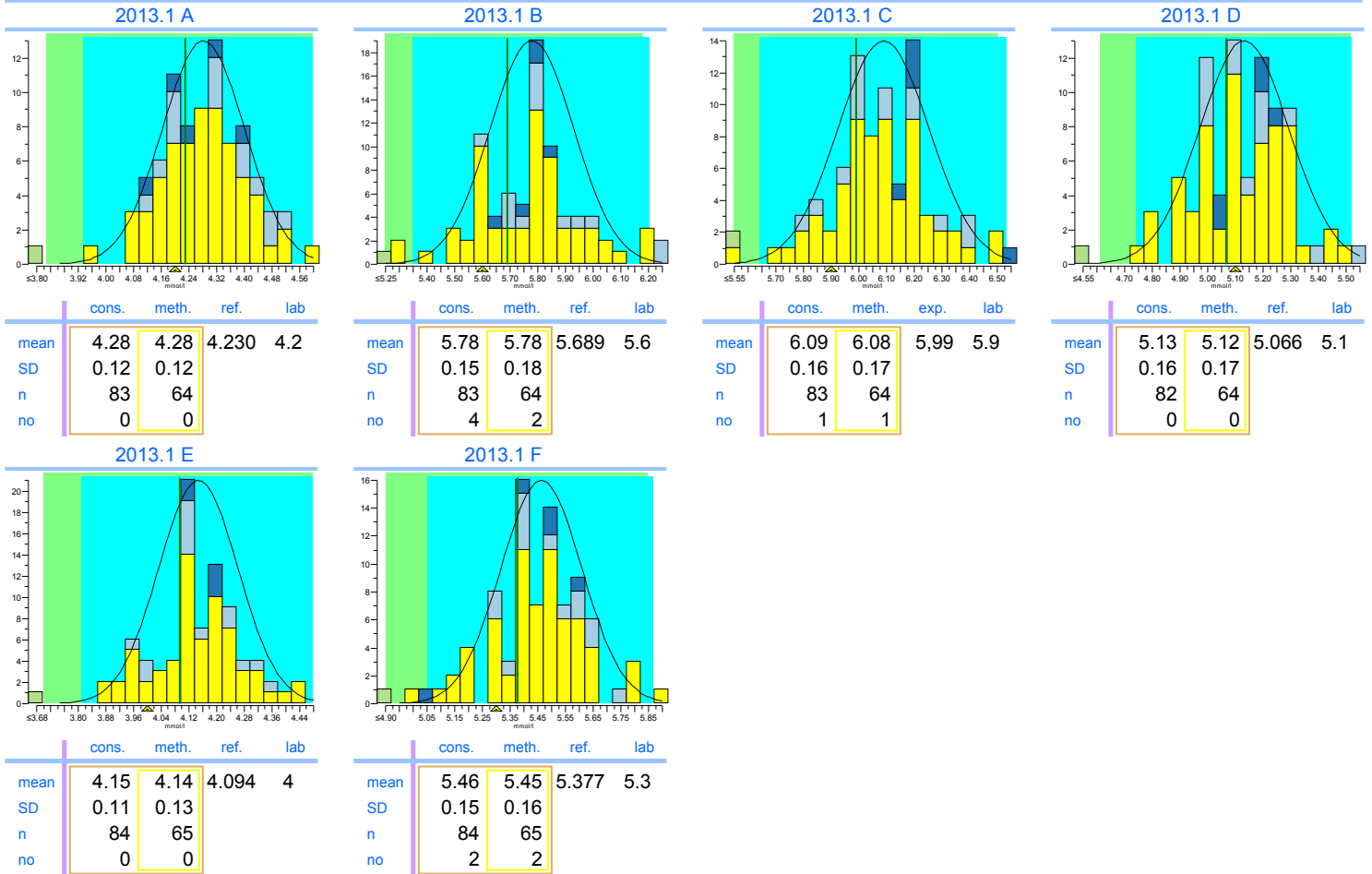
Cholesterol

units: mmol/l



	2013.1	cumulative
Trueness	-1.1%	-1.1%
Precision	1.1%	1.1%
Number	6	6
Outliers	0	0
Sigma-TE	6.0 2	6.0 2
Sigma-SA	6.0	6.0
Score pictogram		
Regression line	$0.00 + 0.989 \cdot x$	$0.00 + 0.989 \cdot x$

Consensus group: Enzymatisch
Method: Enzymatic, automatic, discrete



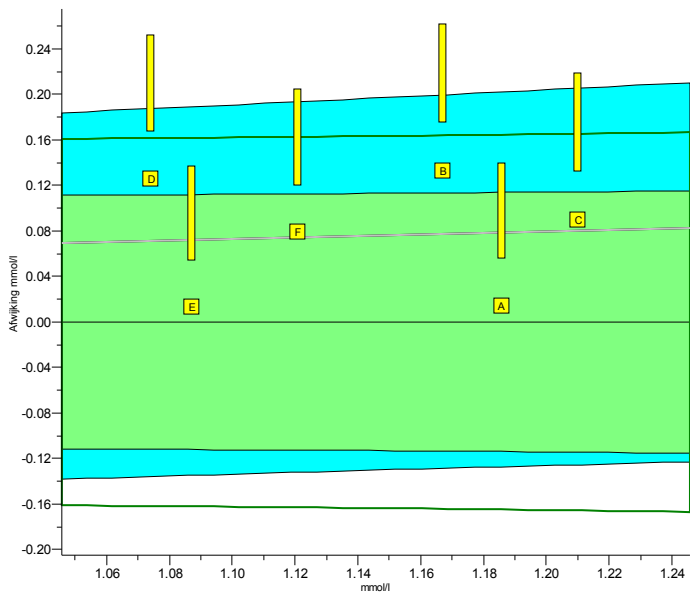
Legend



- Enzymatic, automatic, discrete
- Enzymatic, automatic, kinetic
- Abell-Kendall reference values
- Overige methoden

INPUTS 2013.1

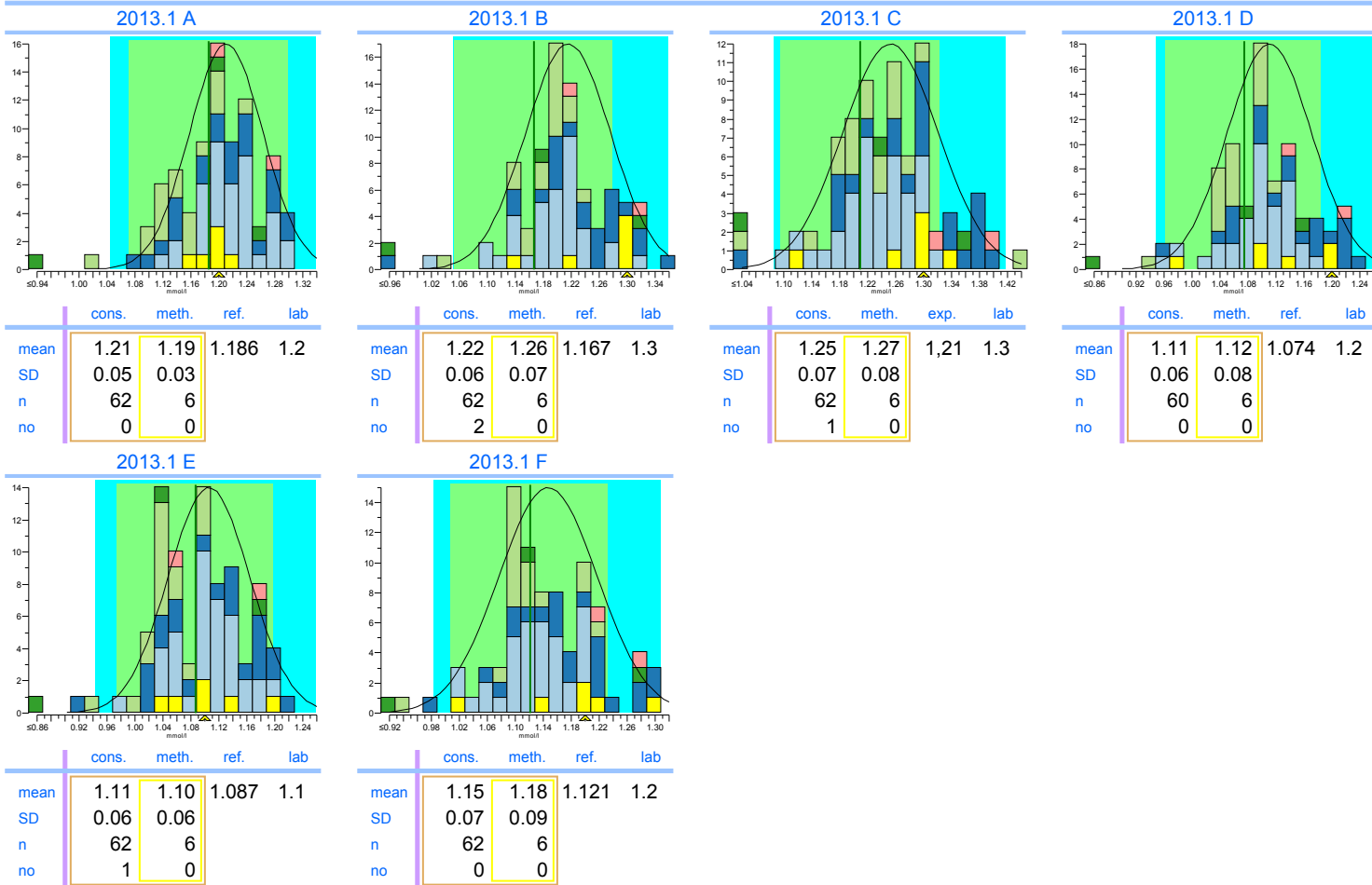
HDL-Cholesterol

units: mmol/l



	2013.1	cumulative
Trueness	+6.6%	+6.6%
Precision	3.7%	3.7%
Number	6	6
Outliers	0	0
Sigma-TE	1.9	1.9
Sigma-SA	3.4 1	3.4 1
Score pictogram		
Regression line	<u>0.00 + 1.066.x</u>	<u>0.00 + 1.066.x</u>

Consensus group	Direct
Method	Catalase method (Denka Seiken)



Legend

- Catalase method (Denka Seiken)
- PEG modified enzyme, PEGME (Kyowa Medex)
- Accelerator Selective Detergent ("Ultra HDL")
- Immuno-inhibition
- Overige methoden
- Precipitation Technique